



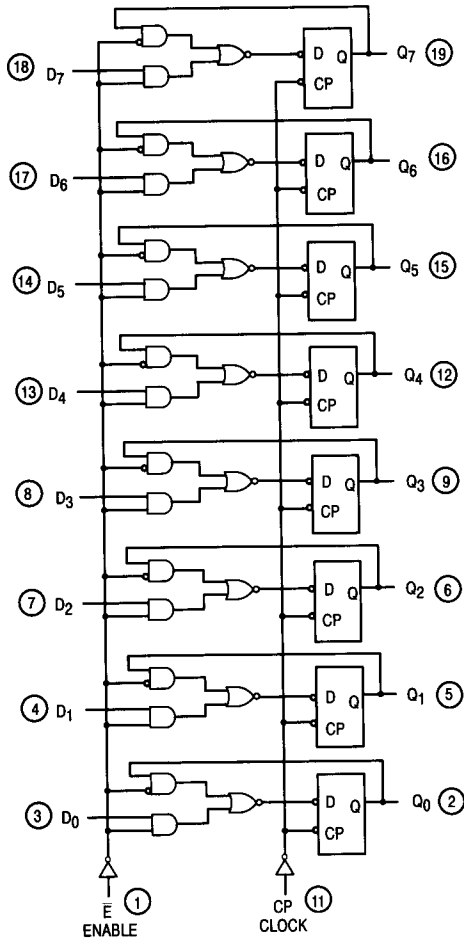
D-Type Flip-Flop With Enable

ELECTRICALLY TESTED PER:
MIL-M-38510/32504

The 54LS377 is an 8-bit register built using advanced Low Power Schottky technology. This register consists of eight D-type flip-flops with a buffered common clock and a buffered common clock enable.

- 8-Bit High-Speed Parallel Registers
- Positive Edge-Triggered D-Type Flip-Flops
- Fully Buffered Common Clock and Enable Inputs
- True and Complement Outputs
- Input Clamp Diode Limits High-Speed Termination Effects

LOGIC DIAGRAM



Military 54LS377



AVAILABLE AS:

- 1) JAN: JM38510/32504BXA
- 2) SMD: N/A
- 3) 883: 54LS377/BXAJC

X = CASE OUTLINE AS FOLLOWS:
PACKAGE: CERDIP: R
CERFLAT: S
LCC: 2

THE LETTER "M" APPEARS BEFORE THE / ON LCC.

PIN ASSIGNMENTS

FUNCT.	DIL 732-03	FLATS 737-02	LCC 756A-02	BURN-IN (COND. A)
E	1	1	1	GND
Q ₀	2	2	2	VCC
D ₀	3	3	3	VCC
D ₁	4	4	4	VCC
Q ₁	5	5	5	VCC
Q ₂	6	6	6	VCC
D ₂	7	7	7	VCC
D ₃	8	8	8	VCC
Q ₃	9	9	9	VCC
GND	10	10	10	GND
CP	11	11	11	CP1
Q ₄	12	12	12	VCC
D ₄	13	13	13	VCC
D ₅	14	14	14	VCC
Q ₅	15	15	15	VCC
Q ₆	16	16	16	VCC
D ₆	17	17	17	VCC
D ₇	18	18	18	VCC
Q ₇	19	19	19	VCC
VCC	20	20	20	VCC

BURN-IN CONDITIONS:
VCC = 5.0 V MIN/6.0 V MAX

TRUTH TABLE

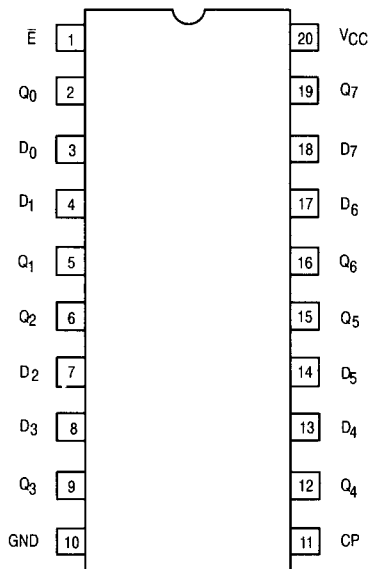
E	CP	D _n	Q _n	Q̄ _n
H		X	No Change	No Change
L		H	H	L
L		L	L	H

L = LOW Voltage Level
H = HIGH Voltage Level
X = Immaterial



54LS377

CONNECTION DIAGRAM



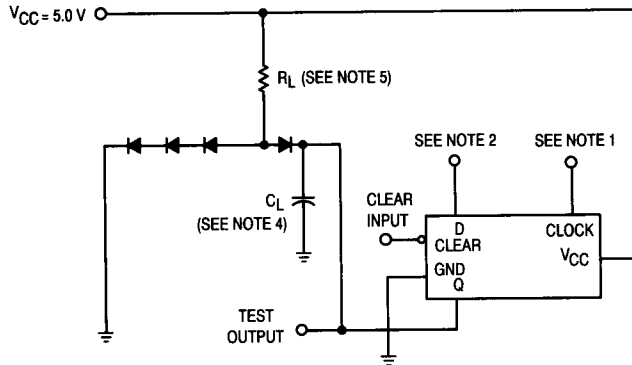
Pin Names		Loading (Note a)	
		HIGH	LOW
\bar{E}	Enable (Active LOW) Input	0.5 U.L.	0.25 U.L.
D ₀ -D ₃	Data Inputs	0.5 U.L.	0.25 U.L.
CP	Clock (Active HIGH Going Edge) Input	0.5 U.L.	0.25 U.L.
Q ₀ -Q ₃	True Outputs (Note b)	10 U.L.	5(2.5) U.L.
Q ₀ -Q ₃	Complemented Outputs (Note b)	10 U.L.	5(2.5) U.L.

NOTES:

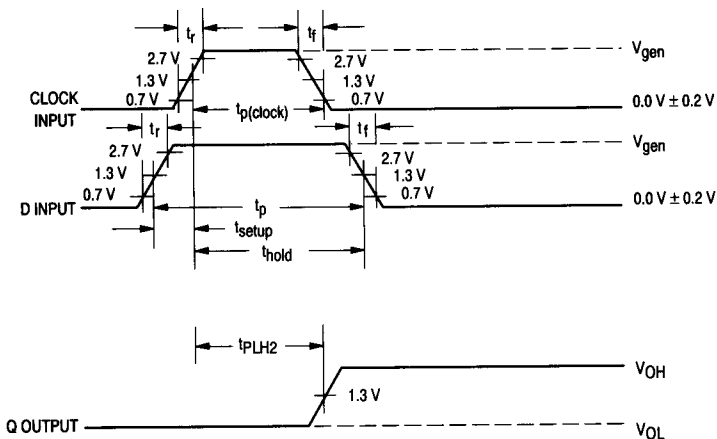
- a. 1 TTL Unit Load (U.L.) = 40 μ A HIGH/1.6 mA LOW.
- b. The Output LOW drive factor is 2.5 U.L. for Military (54) Temperature Ranges.

54LS377

AC TEST CIRCUIT



HIGH-LEVEL SWITCHING WAVEFORMS

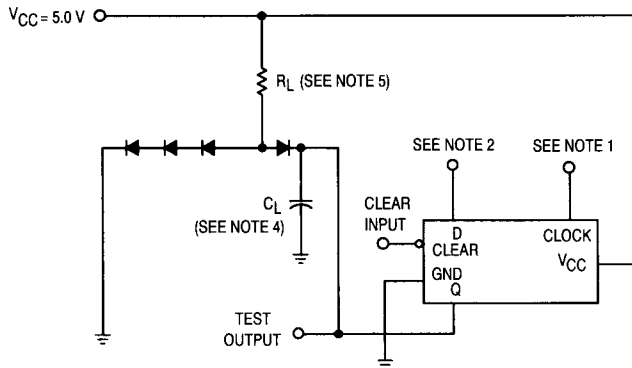


NOTES:

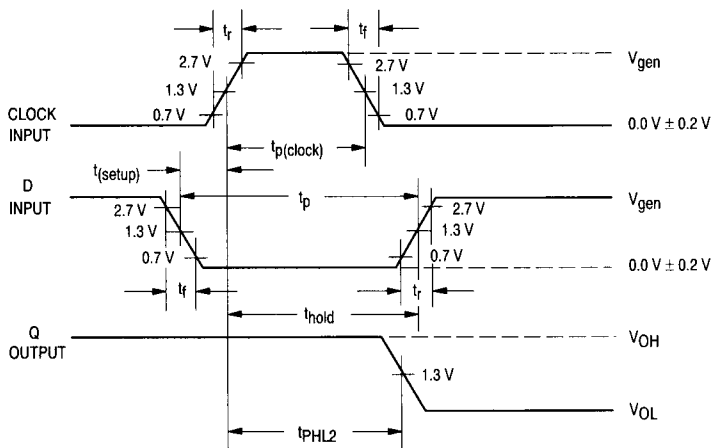
1. Clock input pulse has the following characteristics:
 $V_{gen} = 3.0 V \pm 0.2 V$, $t_r \leq 15 \text{ ns}$, $t_f \leq 6.0 \text{ ns}$, $t_p(\text{clock}) = 30 \text{ ns}$,
 and $\text{PRR} \leq 1.0 \text{ MHz}$.
2. D input has the following characteristics:
 $V_{gen} = 3.0 V \pm 0.2 V$, $t_r \leq 15 \text{ ns}$, $t_f \leq 6.0 \text{ ns}$, $t_{\text{setup}} = 20 \text{ ns}$,
 $t_{\text{hold}} = 5.0 \text{ ns}$, $t_p = 25 \text{ ns}$, and PRR is 50% of the clock PRR .
3. All diodes are 1N3064, or equivalent.
4. $C_L = 50 \text{ pF} \pm 10\%$ (including jig and probe capacitance).
5. $R_L = 2.0 \text{ k}\Omega \pm 5.0\%$.

54LS377

AC TEST CIRCUIT



LOW-LEVEL SWITCHING WAVEFORMS



NOTES:

1. Clock input pulse has the following characteristics:
 $V_{gen} = 3.0V \pm 0.2V$, $t_r \leq 15$ ns, $t_f \leq 6.0$ ns, $t_p(clock) = 30$ ns,
 and PRR ≤ 1.0 MHz. When testing f_{MAX} , PRR = see table,
 and $t_0 = t_1 \leq 6.0$ ns.
2. D input has the following characteristics:
 $V_{gen} = 3.0V \pm 0.2V$, $t_r \leq 15$ ns, $t_f \leq 6.0$ ns, $t_{setup} = 20$ ns,
 $t_{hold} = 5.0$ ns, $t_p = 25$ ns, and PRR is 50% of the clock PRR.
 For f_{MAX} , $t_0 = t_1 \leq 6.0$ ns.
3. All diodes are 1N3064, or equivalent.
4. $C_L = 50$ pF $\pm 10\%$ (including jig and probe capacitance).
5. $R_L = 2.0$ k Ω $\pm 5.0\%$.

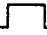

54LS377

Symbol	Parameter	Limits						Unit	Test Condition (Unless Otherwise Specified)
		+ 25°C		+ 125°C		- 55°C			
		Subgroup 1		Subgroup 2		Subgroup 3			
		Min	Max	Min	Max	Min	Max		
V _{OH}	Logical "1" Output Voltage	2.5		2.5		2.5		V	V _{CC} = 4.5 V, I _{OH} = - 0.4 mA, V _{IH} = 2.0 V, \bar{E} = 0.7 V, other inputs are open, CLK = (See Note 1).
V _{OL}	Logical "0" Output Voltage		0.4		0.4		0.4	V	V _{CC} = 4.5 V, I _{OL} = 4.0 mA, V _{IL} = 0.7 V, \bar{E} = 0.7 V, other inputs are open, CLK = (See Note 1).
V _{IC}	Input Clamping Voltage		- 1.5					V	V _{CC} = 4.5 V, I _{IN} = - 18 mA, other inputs are open.
I _{IH}	Logical "1" Input Current		20		20		20	μA	V _{CC} = 5.5 V, V _{IH} = 2.7 V, other inputs are open.
I _{IHH}	Logical "1" Input Current		100		100		100	μA	V _{CC} = 5.5 V, V _{IHH} = 5.5 V, other inputs are open.
I _{OS}	Output Short Circuit Current	- 15	- 100	- 15	- 100	- 15	- 100	mA	V _{CC} = 5.5 V, V _{IN} = 4.5 V, \bar{E} = 0.7 V, CLK = (See Note 2), V _{OUT} = GND.
I _{IL1}	Logical "0" Input Current	- 105	- 345	- 105	- 345	- 105	- 345	μA	V _{CC} = 5.5 V, V _{IL} = 0.4 V (\bar{E}), other inputs are open.
I _{IL2}	Logical "0" Input Current	- 160	- 400	- 160	- 400	- 160	- 400	μA	V _{CC} = 5.5 V, V _{IL} = 0.4 V, other inputs are open.
I _{CC}	Power Supply Current Off		32		32		32	mA	V _{CC} = 5.5 V, V _{IN} = GND (all inputs), CLK = (See Note 2).
V _{IH}	Logical "1" Input Voltage	2.0		2.0		2.0		V	V _{CC} = 4.5 V.
V _{IL}	Logical "0" Input Voltage		0.7		0.7		0.7	V	V _{CC} = 4.5 V.
	Functional Tests	Subgroup 7		Subgroup 8A		Subgroup 8B			per Truth Table with V _{CC} = 5.0 V, V _{INL} = 0.4 V, and V _{INH} = 2.5 V.

5

Symbol	Parameter	Limits						Unit	Test Condition (Unless Otherwise Specified)
		+ 25°C		+ 125°C		- 55°C			
		Subgroup 9		Subgroup 10		Subgroup 11			
		Min	Max	Min	Max	Min	Max		
t _{PHL2}	Propagation Delay /Data-Output High-Low	5.0	32	5.0	42	5.0	42	ns	V _{CC} = 5.0 V, C _L = 50 pF, R _L = 2.0 kΩ.
t _{PLH2}	Propagation Delay /Data-Output Low-High	—	27	—	37	—	37	ns	V _{CC} = 5.0 V, C _L = 15 pF.
t _{PLH2}	Propagation Delay /Data-Output High-Low	5.0	32	5.0	42	5.0	42	ns	V _{CC} = 5.0 V, C _L = 50 pF, R _L = 2.0 kΩ.
t _{PLH2}	Propagation Delay /Data-Output Low-High	—	27	—	37	—	37	ns	V _{CC} = 5.0 V, C _L = 15 pF.
f _{MAX}	Maximum Clock Frequency	30		25		25		MHz	V _{CC} = 5.0 V, C _L = 50 pF, R _L = 2.0 kΩ.
		30							V _{CC} = 5.0 V, C _L = 15 pF.

NOTES:

-  2.5 V minimum/5.5 V maximum
-  0.0 V