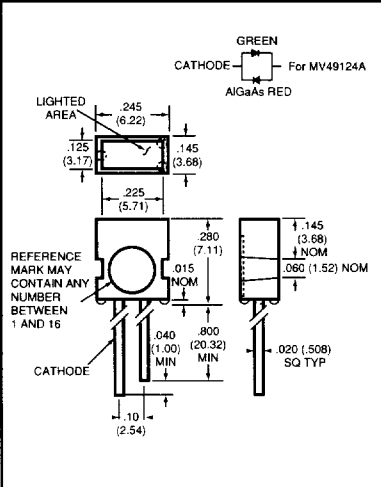
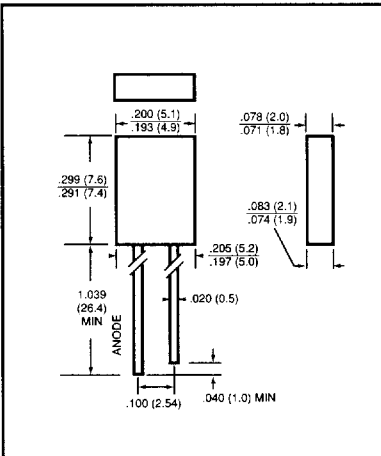


## RECTANGULAR & UNIQUELY SHAPED LED LAMPS

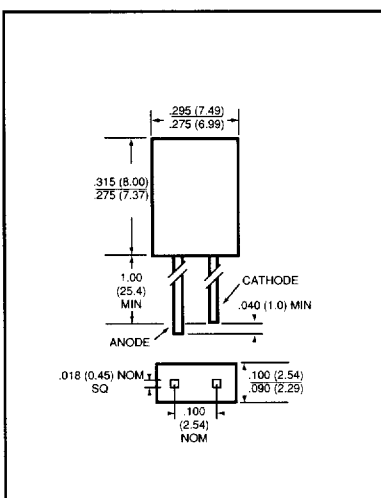
<b>.220" x .125" Rectangular Lamp</b>										
Part Number	Source Color	Wave-length $\lambda_p$ (nm)	Lens Color	Typical Viewing Angle	Forward Voltage $V_F$ (V)		Luminous Intensity $I_V$ (mcd)		Notes	
					typ	max	min	typ		
MV57124A		635	Red Diffused	100°	2.0	3.0	1.0	6.0	4	
MV54124A		565	Green Diffused	100°	2.2	3.0	1.0	6.0	4	
MV53124A	Yellow	585	Yellow Diffused	100°	2.0	3.0	1.0	6.0	4	
MV49124A		660 565	White Diffused	100°	2.2	3.0	1.0	6.0	4	



<b>2 x 5 mm Rectangular Lamp</b>										
Part Number	Source Color	Wave-length $\lambda_p$ (nm)	Lens Color	Typical Viewing Angle	Forward Voltage $V_F$ (V)		Luminous Intensity $I_V$ (mcd)		Notes	
					typ	max	min	typ		
MV57123		635	Red Diffused	100°	2.0	3.0	1.0	4.0	4	
MV54123		565	Green Diffused	100°	2.2	3.0	1.0	4.0	4	
MV53123	Yellow	585	Yellow Diffused	100°	2.1	3.0	1.0	4.0	4	

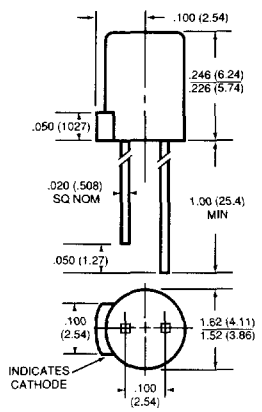


<b>2.5 X 7.4 mm Rectangular Lamp</b>										
Part Number	Source Color	Wave-length $\lambda_p$ (nm)	Lens Color	Typical Viewing Angle	Forward Voltage $V_F$ (V)		Luminous Intensity $I_V$ (mcd)		Notes	
					typ	max	min	typ		
HLMP-0300		635	Red Diffused	100°	2.1	3.0	1.0	2.5	4	
HLMP-0301		635	Red Diffused	100°	2.1	3.0	2.5	5.0	4	
HLMP-0503		565	Green Diffused	100°	2.3	3.0	1.5	3.0	4	
HLMP-0504		565	Green Diffused	100°	2.3	3.0	2.5	5.0	4	
HLMP-0400	Yellow	585	Yellow Diffused	100°	2.2	3.0	1.5	2.5	4	
HLMP-0401	Yellow	585	Yellow Diffused	100°	2.2	3.0	3.0	5.0	4	

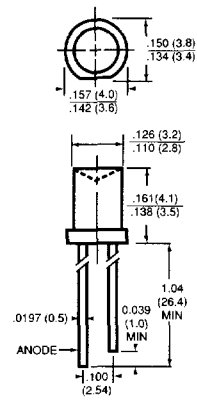


## RECTANGULAR & UNIQUELY SHAPED LED LAMPS

4 mm Flat Top									
Part Number	Source Color	Wave-length $\lambda_p$ (nm)	Lens Color	Typical Viewing Angle	Forward Voltage $V_F$ (V)		Luminous Intensity $I_V$ (mcd)		Notes
					typ	max	min	typ	
HLMP-M200		635	Red Diffused	135°	2.2	3.0	3.4	5.0	4
HLMP-M201		635	Red Diffused	135°	2.2	3.0	5.4	7.0	4
HLMP-M250		635	Red Clear	80°	2.2	3.0	3.4	5.0	5
HLMP-M251		635	Red Clear	80°	2.2	3.0	5.4	7.0	5
HLMP-M500			565	Green Diffused	135°	2.3	3.0	4.2	7.0
HLMP-M501	565		Green Diffused	135°	2.3	3.0	6.7	10.0	4
HLMP-M550	565		Green Clear	80°	2.3	3.0	4.2	10.0	5
HLMP-M551	565		Green Clear	80°	2.3	3.0	6.7	16.0	5
HLMP-M300	Yellow	585	Yellow Diffused	135°	2.2	3.0	3.6	5.0	4
HLMP-M301		585	Yellow Diffused	135°	2.2	3.0	5.7	7.0	4
HLMP-M350		585	Yellow Clear	80°	2.2	3.0	3.6	5.0	5
HLMP-M351		585	Yellow Clear	80°	2.2	3.0	5.7	7.0	5



T-100 Inverted Cone									
Part Number	Source Color	Wave-length $\lambda_p$ (nm)	Lens Color	Typical Viewing Angle	Forward Voltage $V_F$ (V)		Luminous Intensity $I_V$ (mcd)		Notes
					typ	max	min	typ	
QL484ET		635	Orange Clear	180°	2.0	2.8	0.6	1.2	5
QL484GT		565	Green Clear	180°	2.1	2.8	0.6	1.2	5
QL484HT		697	Red Clear	180°	2.0	2.8	0.3	0.6	5
QL484IT		635	Red Clear	180°	2.0	2.8	0.6	1.2	5
QL484RT		660	Red Clear	180°	1.7	2.0	0.3	0.5	5
QL484YT	Yellow	585	Yellow Clear	180°	2.0	2.8	0.4	1.0	5



**Notes:**

1.  $V_F$  &  $I_V$  @  $I_F = 1$  mA.
  3.  $V_F$  &  $I_V$  @  $I_F = 10$  mA.
  4.  $V_F$  &  $I_V$  @  $I_F = 20$  mA.
  5.  $V_F$  @  $I_F = 20$  mA;  $I_V$  @  $I_F = 10$  mA
- HER = High Efficiency Red.