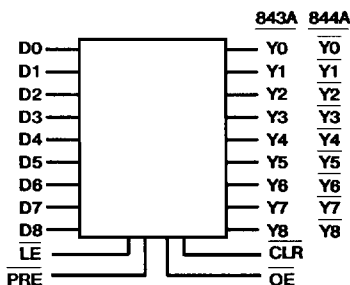


CD54/74FCT843A, CD54/74FCT843BT CD54/74FCT844A, CD54/74FCT844BT

July 1990



FUNCTIONAL DIAGRAM

9-Bit Transparent Latch, 3-State

CD54/74FCT843A, CD54/74FCT843BT - Non-Inverting
CD54/74FCT844A, CD54/74FCT844BT - Inverting

Type Features:

- Buffered inputs
- Typical propagation delay:
6.8ns @ VCC = 5V, TA = +25°C, CL = 50pF (FCT843A)

The CD54/74FCT843A, 843BT, 844A and 844BT transparent latches use a small-geometry BiCMOS technology. The output stage is a combination of bipolar and CMOS transistors that limits the output-HIGH level to two diode drops below VCC. This resultant lowering of output swing (0V to 3.7V) reduces power bus ringing (a source of EMI) and minimizes VCC bounce and ground bounce and their effects during simultaneous output switching. The output configuration also enhances switching speed and is capable of sinking 32 to 48 milliamperes.

The CD54/74FCT843A, 843BT, 844A and 844BT outputs are transparent to the inputs when the Latch Enable (\overline{LE}) is HIGH. When the Latch Enable (\overline{LE}) goes LOW, the data is latched. The Output Enable (\overline{OE}) controls the 3-state outputs. When the Output Enable (\overline{OE}) is HIGH, the outputs are in the high-impedance state. The latch operation is independent of the state of the Output Enable. These devices, having Preset (\overline{PRE}) and Clear (\overline{CLR}), are ideal for parity bus interfacing. When \overline{PRE} is LOW, the outputs are HIGH if \overline{OE} is LOW. \overline{PRE} overrides \overline{CLR} . When \overline{CLR} is LOW, the outputs are LOW if \overline{OE} is LOW. When \overline{CLR} is HIGH, data can be entered into the latch.

The CD54/74FCT843A, 843BT, 844A and 844BT are supplied in 24-lead dual-in-line narrow-body plastic packages (EN suffix) and in 24-lead dual-in-line small-outline plastic packages (M suffix). Both package types are operable over two temperature ranges: Commercial (0°C to +70°C) and Extended Industrial (-55°C to +125°C).

The CD54FCT843A and 844A are also available in chip form (H suffix). These unpackaged devices are operable over the -55°C to +125°C temperature range.

Family Features:

- SCR-latchup-resistant BiCMOS process and circuit design
- FCTXXXA - Speed of bipolar FAST*/AS/S;
FCTXXXBT - 30% faster than FAST/AS/S with significantly reduced power consumption
- 48/32-mA output sink current (commercial/extended industrial)
- Output voltage swing limited to 3.7V @ VCC = 5V
- Controlled output-edge rates
- Input/output isolation to VCC
- BiCMOS technology with low quiescent power

* FAST is a registered trademark of Fairchild Semiconductor Corp.

FUNCTION TABLES

INPUTS							OUT-PUTS	FUNCTION
\overline{CLR}	\overline{PRE}	\overline{OE}	\overline{LE}	843A/ 843BT Dn	844A/ 844BT Dn	Yn		
H	H	H	X	X	X	Z	High Z	
H	H	H	L	X	X	Z	Latched (High Z)	
H	H	L	H	L	H	L	Transparent	
H	H	L	H	H	L	H	Transparent	
H	H	L	L	X	X	NC	Latched	
H	L	L	X	X	X	H	Preset	
L	H	L	X	X	X	L	Clear	
L	L	L	X	X	X	H	Preset	
L	H	H	L	X	X	Z	Latched (High Z)	
H	L	H	L	X	X	Z	Latched (High Z)	

H = HIGH, L = LOW, X = Immaterial,
NC = No Change, Z = High Impedance

MAXIMUM RATINGS, Absolute-Maximum Values:

DC SUPPLY-VOLTAGE (VCC)	-0.5V to 6V
DC INPUT DIODE CURRENT, I _{IK} (for V _I < -0.5V)	-20mA
DC OUTPUT DIODE CURRENT, I _{OK} (for V _O < -0.5V)	-50mA
DC OUTPUT SINK CURRENT per Output Pin, I _O	+70mA
DC OUTPUT SOURCE CURRENT per Output Pin, I _O	-30mA
DC VCC CURRENT (I _{CC})	237mA
DC GROUND CURRENT (I _{GND})	453mA
POWER DISSIPATION PER PACKAGE (PD):	
For TA = -55°C to +100°C (PACKAGE TYPE E)	500mW
For TA = +100°C to +125°C (PACKAGE TYPE E)	Derate Linearly at 8mW/°C to 300mW
For TA = -55°C to +70°C (PACKAGE TYPE M)	400mW
For TA = +70°C to +125°C (PACKAGE TYPE M)	Derate Linearly at 8mW/°C to 70mW
OPERATING-TEMPERATURE RANGE (TA):	
PACKAGE TYPE E, M	-55°C to +125°C
STORAGE TEMPERATURE (T_{stg})	
-85°C to +150°C	
LEAD TEMPERATURE (DURING SOLDERING):	
At distance 1/16 in. ± 1/32 in. (1.59mm ± 0.79mm) from case for 10s maximum	+265°C
Unit inserted into PC board min. thickness 1/16 in. (1.59mm) with solder contacting lead tips only	+300°C

RECOMMENDED OPERATING CONDITIONS:

The following are normal operating ranges for these devices. For maximum reliability, devices should always be operated within these ranges.

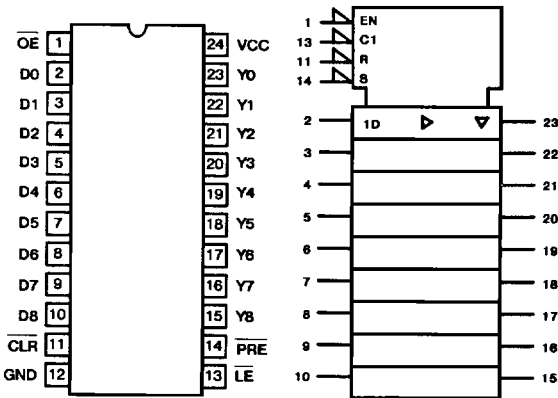
CHARACTERISTIC	LIMITS		UNITS
	MIN	MAX	
Supply-Voltage Range, VCC*: CD74 Series, TA = 0°C to 70°C	4.75	5.25	V
CD54 Series, TA = -55°C to +125°C	4.5	5.5	V
DC Input Voltage, V _I	0	VCC	V
DC Output Voltage, V _O	0	≤ VCC	V
Operating Temperature, TA	-55	+125	°C
Input Rise and Fall Slew Rate, dt/dv	0	10	ns/V

* Unless otherwise specified, all voltages are referenced to ground.

4
TECHNICAL DATA

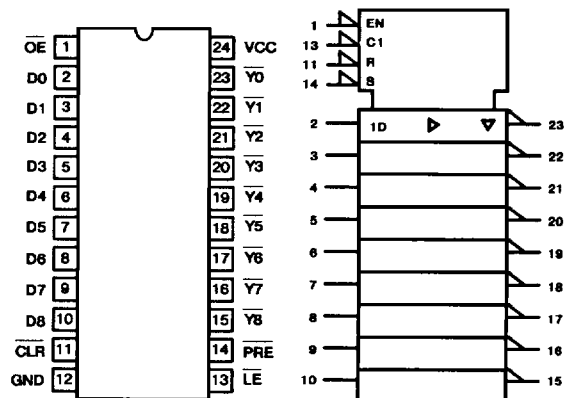
CD54/74FCT843A, CD54/74FCT843BT TYPES

CD54/74FCT844A, CD54/74FCT844BT TYPES



TERMINAL ASSIGNMENT

IEC LOGIC SYMBOL



TERMINAL ASSIGNMENT

IEC LOGIC SYMBOL

STATIC ELECTRICAL CHARACTERISTICS

FCT Series: 74FCT Commercial Temperature Range, 0°C to +70°C; VCC max = 5.25V, VCC min = 4.75V

54FCT Extended Industrial Temperature Range, -55°C to +125°C; VCC max = 5.5V, VCC min = 4.5V

CHARACTERISTICS		TEST CONDITIONS		VCC (V)	AMBIENT TEMPERATURE (TA)						UNITS
					+25°C		0°C to +70°C		-55°C to +125°C		
		VI (V)	IO (mA)		MIN	MAX	MIN	MAX	MIN	MAX	
High-Level Input Voltage	V _{IH}			4.5 to 5.5	2	-	2	-	2	-	V
Low-Level Input Voltage	V _{IL}			4.5 to 5.5	-	0.8	-	0.8	-	0.8	V
High-Level Output Voltage	V _{OH}	V _{IH} or V _{IL}	-24	MIN	2.4	-	2.4	-	-	-	V
			-20	MIN	2.4	-	-	-	2.4	-	V
Low-Level Output Voltage	V _{OL}	V _{IH} or V _{IL}	48	MIN	-	0.55	-	0.55	-	-	V
			32	MIN	-	0.55	-	-	-	0.55	V
High-Level Input Current	I _{IH}	VCC		MAX	-	0.1	-	1	-	1	μA
Low-Level Input Current	I _{IL}	GND		MAX	-	-0.1	-	-1	-	-1	μA
3-State Leakage Current	IOZH	VCC		MAX	-	0.5	-	10	-	10	μA
	IOZL	GND		MAX	-	-0.5	-	-10	-	-10	μA
Short-Circuit Output Current *	I _{OS}	VCC or GND V _O = 0		MAX	-75	-	-75	-	-75	-	mA
Input Clamp Voltage	V _{IK}	VCC or GND	-18	MIN	-	-1.2	-	-1.2	-	-1.2	V
Quiescent Supply Current, MSI	I _{CC}	VCC or GND	0	MAX	-	8	-	80	-	500	μA
Additional Quiescent Supply Current per Input Pin TTL Inputs High, 1 Unit Load	ΔI _{CC}	3.4V†		MAX	-	1.6	-	1.6	-	2	mA

* Not more than one output should be shorted at one time. Test duration should not exceed 100ms.

† Inputs that are not measured are at VCC or GND.

FCT Input Loading: All inputs are 1 unit load. Unit load is ΔI_{CC} limit specified in Static Characteristics Chart, e.g., 1.6mA max. @ +70°C.

PREREQUISITE FOR SWITCHING

CHARACTERISTICS	SYMBOL	V _{CC} (V)	CD54/74FCT843A, 844A						CD54/74FCT843BT, 844BT						UNITS
			AMBIENT TEMPERATURE (T _A)												
			+25°C		0°C to +70°C		-55°C to +125°C		+25°C		0°C to +70°C		-55°C to +125°C		
			TYP	MIN	MAX	MIN	MAX	TYP	MIN	MAX	MIN	MAX			
Pulse Width	\overline{LE}	tW	5†	4	-	5	-							ns	
	$\overline{PRE, CLR}$	tW	5	8	-	9	-							ns	
Recovery Time	$\overline{PRE, CLR}$	tREC	5	14	-	17	-							ns	
Setup Time	Data to \overline{LE}	tSU	5	2.5	-	2.5	-							ns	
Hold Time	Data to \overline{LE}	tH	5	2.5	-	3	-							ns	

CONTACT LOCAL SALES OFFICE FOR AVAILABILITY

†5V: min. is @ 4.5V
5V: min. is @ 4.75V for 0°C to +70°C
typ. is @ 5V

SWITCHING CHARACTERISTICS: t_r, t_f = 2.5ns, C_L = 50pF, R_L = See Figure 4

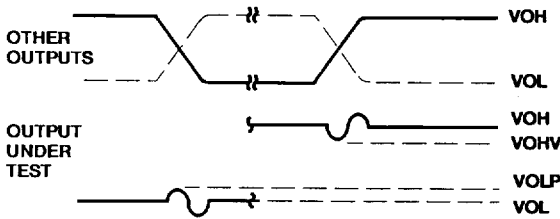
CHARACTERISTICS	SYMBOL	V _{CC} (V)	CD54/74FCT843A, 844A						CD54/74FCT843BT, 844BT						UNITS
			AMBIENT TEMPERATURE (T _A)												
			+25°C		0°C to +70°C		-55°C to +125°C		+25°C		0°C to +70°C		-55°C to +125°C		
			TYP	MIN	MAX	MIN	MAX	TYP	MIN	MAX	MIN	MAX			
Propagation Delays:	FCT843A/BT	tPLH, tPHL	5†	6.8	1.5	9	1.5	10						ns	
Data to Outputs	FCT844A/BT	tPLH, tPHL	5	7.5	1.5	10	1.5	12						ns	
\overline{LE} to Outputs		tPLH, tPHL	5	9	1.5	12	1.5	13						ns	
\overline{PRE} to Outputs		tPLH	5	9	1.5	12	1.5	14						ns	
\overline{CLR} to Outputs		tPHL	5	9.8	1.5	13	1.5	14						ns	
Output Enable Times	FCT843A/BT	tPZL, tPZH	-	10.5	1.5	14	1.5	15						ns	
	FCT844A/BT	tPZL, tPZH	-	10.5	1.5	14	1.5	15						ns	
Output Disable Times	FCT843A/BT	tPLZ, tPHZ	-	6	1.5	8	1.5	10						ns	
	FCT844A/BT	tPLZ, tPHZ	-	6	1.5	8	1.5	10						ns	
Power Dissipation Capacitance	FCT843A/BT	CPD §	-											pF	
	FCT844A/BT	CPD §	-											pF	
Min. (Valley) VOHV During Switching of Other Outputs (Output Under Test Not Switching)	VOHV See Fig. 1		5	0.5 Typical @ +25°C									V		
Max. (Peak) VOLP During Switching of Other Outputs (Output Under Test Not Switching)	VOLP See Fig. 1		5	1 Typical @ +25°C									V		
Input Capacitance	CI		-	-	-	10	-	10	-	-	10	-	10	pF	
3-State Output Capacitance	CO		-	-	-	15	-	15	-	-	15	-	15	pF	

†5V: min. is @ 5.5V
max. is @ 4.5V
5V: min. is @ 5.25V for 0°C to +70°C
max. is @ 4.75V for 0°C to +70°C
typ. is @ 5V

§CPD, measured per function, is used to determine the dynamic power consumption.
PD (per package) = V_{CC} ICC + Σ (V_{CC}² fi CPD + VO² to CL + V_{CC} ΔICC D) where:
V_{CC} = supply voltage
ΔICC = flow through current x unit load
CL = output load capacitance
D = duty cycle of input high
fo = output frequency
fi = input frequency

4
TECHNICAL DATA

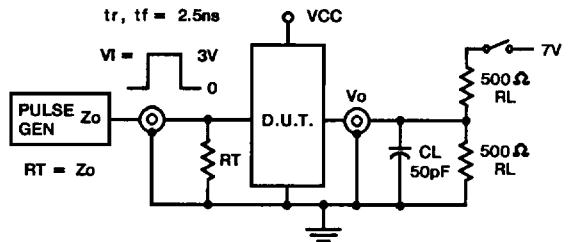
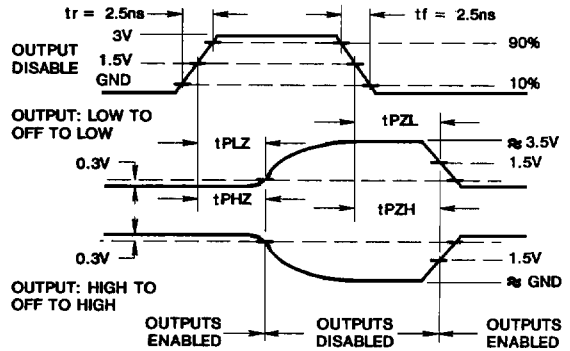
PARAMETER MEASUREMENT INFORMATION



NOTES:

1. VOLP is measured with respect to a ground reference near the output under test. VOHV is measured with respect to VOH.
2. Input pulses have the following characteristics:
 PRR \leq 1MHz, $t_r = 2.5ns$, $t_f = 2.5ns$, skew 1ns.
3. R.F. fixture with 700-MHz design rules required. IC should be soldered into test board and bypassed with 0.1 μ F capacitor. Scope and probes require 700-MHz bandwidth.

Figure 1 - Simultaneous switching transient waveforms.



TEST	SWITCH POSITION
tPLZ, tPZL, OPEN DRAIN	CLOSED
tPHZ, tPZH, tPLH, tPHL	OPEN

Figure 4 - Three-state propagation delay times and test circuit.

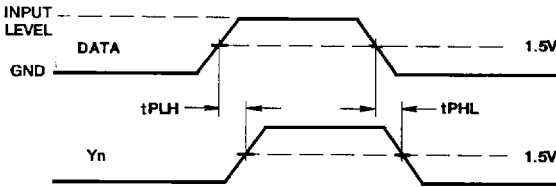


Figure 2 - Data to Yn propagation delays.

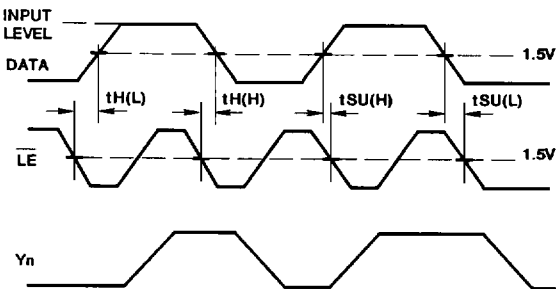


Figure 3 - Latch Enable prerequisite times.

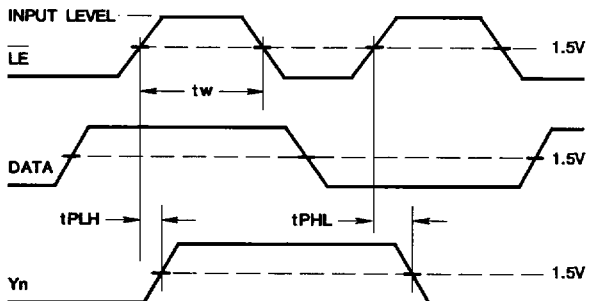


Figure 5 - Latch Enable propagation delays.