

# ADV611/ADV612

## WAVELET-BASED CCTV SYSTEM ON A CHIP



### Typical Highly Compressed Video Frame

(720 × 486 @ 16 bits per pixel: compressed to 2.8KB)



### Compressed Video Frame with QualityBox

(720 × 486 @ 16 bits per pixel: compressed to 2.8KB)

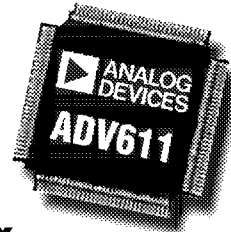


### Compressed Video Frame with QualityBox

(720 × 486 @ 16 bits per pixel: compressed to 2.8KB)

### ADV611

0°C to +70°C

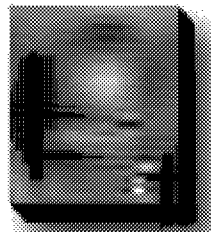


### ADV612

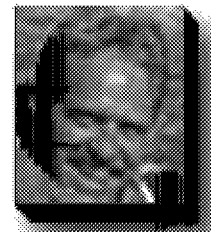
-25°C to +85°C

### QualityBox

Define and control the location and size of a high quality box within the video frame from a remote monitoring site.



Face blown up  
without QualityBox



Face blown up  
using QualityBox

### Motion Detection

Enable and control the location and varying sensitivity level of motion detection within a video sequence from a remote monitoring site.

### Compression

The ADV611/612 can take an uncompressed video signal (27 Mbytes/sec.) and compress through a broad range from a visually loss less 4:1 all the way to 7500:1. The images to the left could be sent over a 56 kbps modem at greater than 1 frame per second.

### Edge Enhancement and Detection

Since the ADV611/612 use wavelet compression, edges in the image can be enhanced during compression. Furthermore, edges can be easily located within the compressed video field.

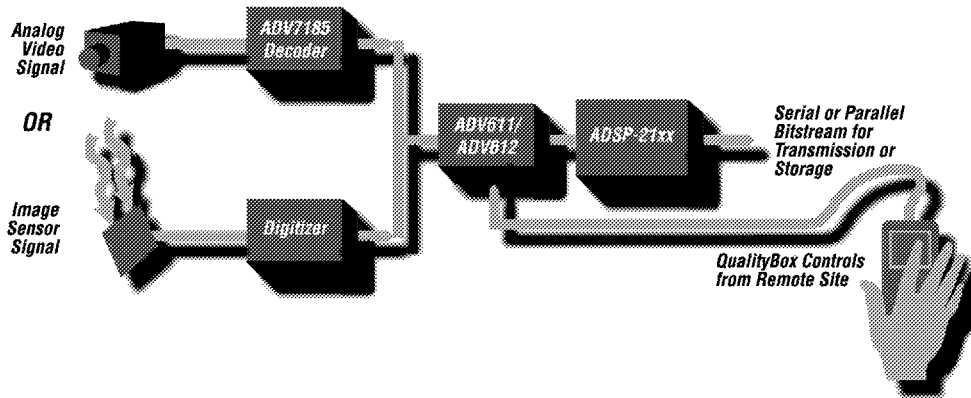
### Extended Temperature Range

The ADV611 is for commercial applications, while the ADV612 is for extended temperature range industrial applications.



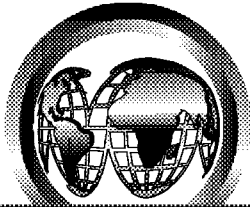
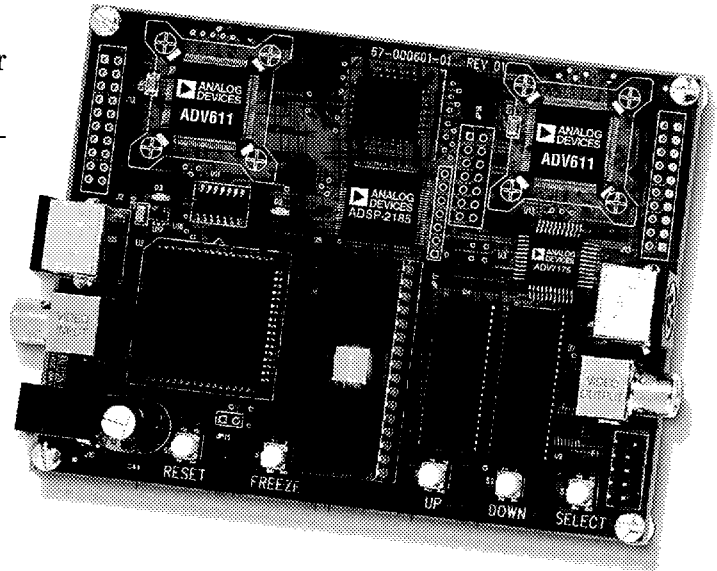
# ADV611/ADV612

## Typical Application



## CCTVpipe Evaluation Board

There is a low cost stand-alone evaluation board for the ADV611 called the CCTVpipe. The CCTVpipe provides a fast, simple and low cost means of evaluating the performance and key feature of the ADV611. The CCTVpipe is available through all authorized Analog Devices sales channels.



<http://www.analog.com>

### EUROPE HEADQUARTERS

Am Westpark 1-3  
D-81373 München, Germany  
Tel: +89 76903 551; Fax: +89 76903 557

### JAPAN HEADQUARTERS

New Pier Takeshiba, South Tower Building  
1-16-1 Kaigan, Minato-ku, Tokyo 105, Japan  
Tel: (3) 5402-8210; Fax: (3) 5402-1063

### SOUTHEAST ASIA HEADQUARTERS

2102 Nat West Tower, Times Square  
One Matheson Street  
Causeway Bay, Hong Kong  
Tel: (852) 506-9336; Fax: (852) 506-4755

### WORLDWIDE HEADQUARTERS

One Technology Way, P.O. Box 9106  
Norwood, MA 02062-9106, USA  
Tel: 781-329-4700, 800-262-5643 (USA only);  
Fax: 781-326-8703

