

DM54LS323/DM74LS323 8-Bit Universal Shift/Storage Register with Synchronous Reset and Common I/O Pins

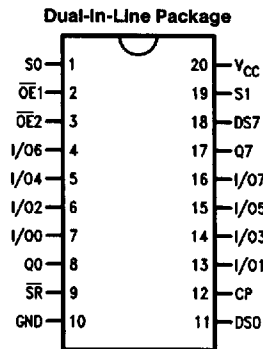
General Description

The 'LS323 is an 8-bit universal shift/storage register with TRI-STATE® outputs. Its function is similar to the 'LS299 with the exception of Synchronous Reset. Parallel load inputs and flip-flop outputs are multiplexed to minimize pin count. Separate inputs and outputs are provided for flip-flops Q0 and Q7 to allow easy cascading. Four operation modes are possible: hold (store), shift left, shift right, and parallel load. All modes are activated on the LOW-to-HIGH transition of the Clock.

Features

- Common I/O for reduced pin count
- Four operation modes: shift left, shift right, parallel load and store
- Separate continuous inputs and outputs from Q0 and Q7 allow easy cascading
- Fully synchronous reset
- TRI-STATE outputs for bus oriented applications

Connection Diagram



TL/F/9829-1

Order Number DM54LS323J, DM54LS323W, DM74LS323WM or DM74LS323N
See NS Package Number J20A, M20B, N20A or W20A

Pin Names	Description
CP	Clock Pulse Input (Active Rising Edge)
DS0	Serial Data Input for Right Shift
DS7	Serial Data Input for Left Shift
S0, S1	Mode Select Inputs
SR	Synchronous Reset Input (Active LOW)
OE1, OE2	TRI-STATE Output Enable Inputs (Active LOW)
I/O0-I/O7	Parallel Data Inputs or TRI-STATE Parallel Outputs
Q0, Q7	Serial Outputs

TRI-STATE® is a registered trademark of National Semiconductor Corporation.

Absolute Maximum Ratings (Note)

If Military/Aerospace specified devices are required, please contact the National Semiconductor Sales Office/Distributors for availability and specifications.

Supply Voltage	7V
Input Voltage	7V
Operating Free Air Temperature Range	
DM54LS	-55°C to +125°C
DM74LS	0°C to +70°C
Storage Temperature Range	-65°C to +150°C

Note: The "Absolute Maximum Ratings" are those values beyond which the safety of the device cannot be guaranteed. The device should not be operated at these limits. The parametric values defined in the "Electrical Characteristics" table are not guaranteed at the absolute maximum ratings. The "Recommended Operating Conditions" table will define the conditions for actual device operation.

Recommended Operating Conditions

Symbol	Parameter	DM54LS323			DM74LS323			Units
		Min	Nom	Max	Min	Nom	Max	
V _{CC}	Supply Voltage	4.5	5	5.5	4.75	5	5.25	V
V _{IH}	High Level Input Voltage	2			2			V
V _{IL}	Low Level Input Voltage			0.7			0.8	V
I _{OH}	High Level Output Current			-0.4			-0.4	mA
I _{OL}	Low Level Output Current			4			8	mA
T _A	Free Air Operating Temperature	-55		125	0		70	°C
t _S (H)	Setup Time HIGH or LOW	24			24			ns
t _S (L)	S0 or S1 to CP	24			24			ns
t _H (H)	Hold Time HIGH or LOW	5			0			ns
t _H (L)	S0 or S1 to CP	5			0			ns
t _S (H)	Setup Time HIGH or LOW	15			10			ns
t _S (L)	I/O _n , D _S 0, D _S 7 to CP	15			10			ns
t _H (H)	Hold Time HIGH or LOW	5			0			ns
t _H (L)	I/O _n , D _S 0, D _S 7 to CP	5			0			ns
t _S (H)	Setup Time HIGH or LOW	30			15			ns
t _S (L)	SR to CP	20			15			ns
t _H (H)	Hold Time HIGH or LOW	0			0			ns
t _H (L)	SR to CP	0			0			ns
t _w (H)	CP Pulse Width HIGH or LOW	15			15			ns
t _w (L)		15			15			ns

Electrical Characteristics

Over recommended operating free air temperature range (unless otherwise noted)

Symbol	Parameter	Conditions	Min	Typ (Note 1)	Max	Units
V_I	Input Clamp Voltage	$V_{CC} = \text{Min}, I_I = -18 \text{ mA}$			-1.5	V
V_{OH}	High Level Output Voltage	$V_{CC} = \text{Min}, I_{OH} = \text{Max}$ $V_{IL} = \text{Max}$	DM54	2.5		V
			DM74	2.7	3.4	
V_{OL}	Low Level Output Voltage	$V_{CC} = \text{Min}, I_{OL} = \text{Max}$ $V_{IH} = \text{Min}$	DM54		0.4	V
			DM74		0.35	
			$I_{OL} = 4 \text{ mA}, V_{CC} = \text{Min}$	DM74		
I_I	Input Current @ Max Input Voltage	$V_{CC} = \text{Max}, V_I = 7\text{V}$ $V_I = 10\text{V (DM54)}$	Others		0.1	mA
			S_n Inputs		0.2	mA
I_{IH}	High Level Input Current	$V_{CC} = \text{Max}, V_I = 2.7\text{V}$	Others		20	μA
			S_n Inputs		40	μA
I_{IL}	Low Level Input Current	$V_{CC} = \text{Max}, V_I = 0.4\text{V}$	Others		-0.4	mA
			S_n Inputs		-0.8	mA
I_{OS}	Short Circuit Output Current	$V_{CC} = \text{Max}$ (Note 2)	DM54	-20	-100	mA
			DM74	-20	-100	
I_{CC}	Supply Current	$V_{CC} = \text{Max}$			60	mA
I_{OZH}	TRI-STATE Output Off Current HIGH	$V_{CC} = \text{Max}$ $V_O = 2.7\text{V}$			40	μA
I_{OZL}	TRI-STATE Output Off Current LOW	$V_{CC} = \text{Max}$ $V_O = 0.4\text{V}$			-400	μA

Note 1: All typicals are at $V_{CC} = 5\text{V}, T_A = 25^\circ\text{C}$.

Note 2: Not more than one output should be shorted at a time, and the duration should not exceed one second.

Switching Characteristics $V_{CC} = +5.0\text{V}, T_A = +25^\circ\text{C}$

Symbol	Parameter	DM54LS323		DM74LS323		Units
		$C_L = 15 \text{ pF}$		$R_L = 2 \text{ k}\Omega, C_L = 15 \text{ pF}$		
		Min	Max	Min	Max	
f_{max}	Maximum Input Frequency	35		35		MHz
t_{PLH}	Propagation Delay		26		23	ns
t_{PHL}	CP to Q0 or Q7		28		25	
t_{PLH}	Propagation Delay		25		25	ns
t_{PHL}	CP to I/O_n		35		29	
t_{PZH}	Output Enable Time		18		18	ns
t_{PZL}	$C_L = 50 \text{ pF}$		25		23	
t_{PHZ}	Output Disable Time		15		15	ns
t_{PLZ}	$C_L = 5 \text{ pF}$		20		15	

Functional Description

The 'LS323 contains eight edge-triggered D-type flip-flops and the interstage logic necessary to perform synchronous reset, shift left, shift right, parallel load and hold operations. The type of operation is determined by S0 and S1 as shown in the Mode Select Table. All flip-flop outputs are brought out through TRI-STATE buffers to separate I/O pins that also serve as data inputs in the parallel load mode. Q0 and Q7 are also brought out on other pins for expansion in serial shifting of longer words.

A LOW signal on \overline{SR} overrides the Select inputs and allows the flip-flops to be reset by the next rising edge of CP. All other state changes are also initiated by the LOW-to-HIGH CP transition. Inputs can change when the clock is in either state provided only that the recommended setup and hold times, relative to the rising edge of CP, are observed.

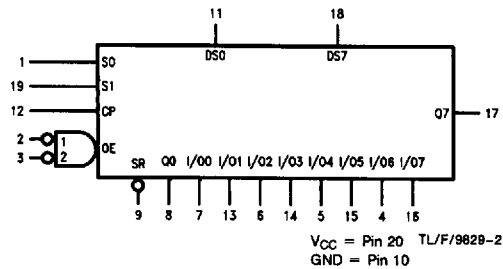
A HIGH signal on either $\overline{OE}1$ or $\overline{OE}2$ disables the TRI-STATE buffers and puts the I/O pins in the high impedance state. In this condition the shift, load, hold and reset operations can still occur. The TRI-STATE buffers are also disabled by HIGH signals on both S0 and S1 in preparation for a parallel load operation.

Mode Select Table

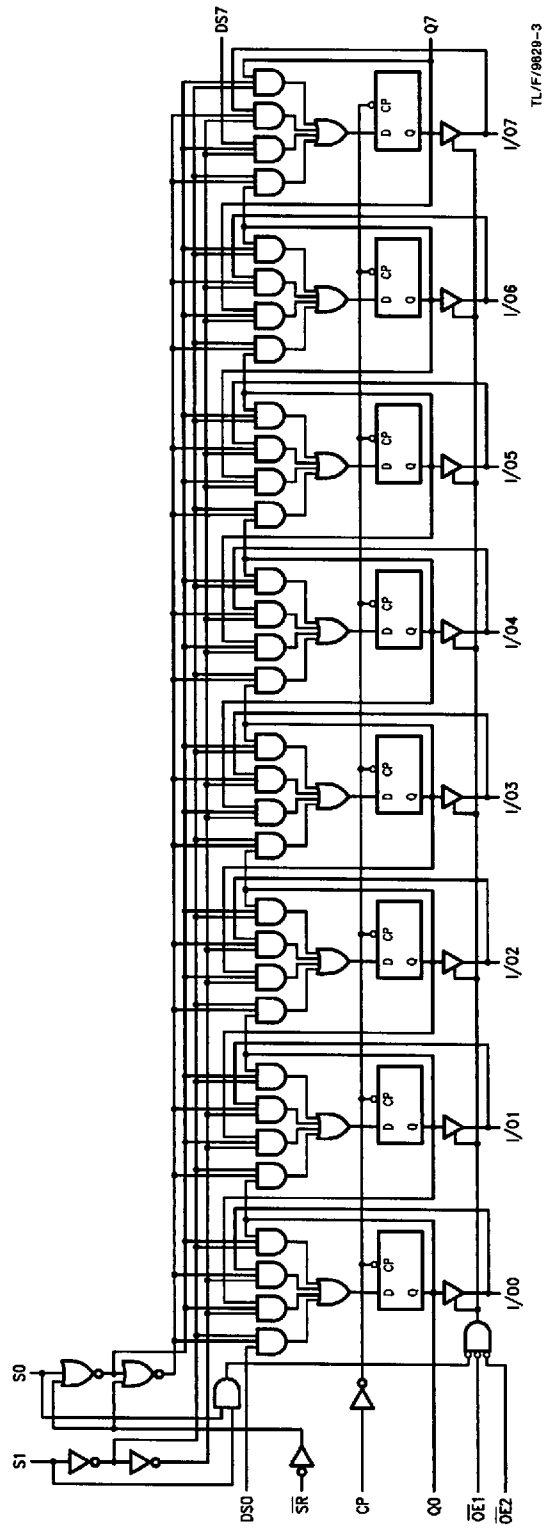
Inputs				Response
\overline{SR}	S1	S0	CP	
L	X	X		Synchronous Reset; Q0-Q7 = LOW
H	H	H		Parallel Load; I/O _n → Q _n
H	L	H		Shift Right; DS0 → Q0, Q0 → Q1, etc.
H	H	L		Shift Left; DS7 → Q7, Q7 → Q6, etc.
H	H	H	X	Hold

H = HIGH Voltage Level
L = LOW Voltage Level
X = Immaterial

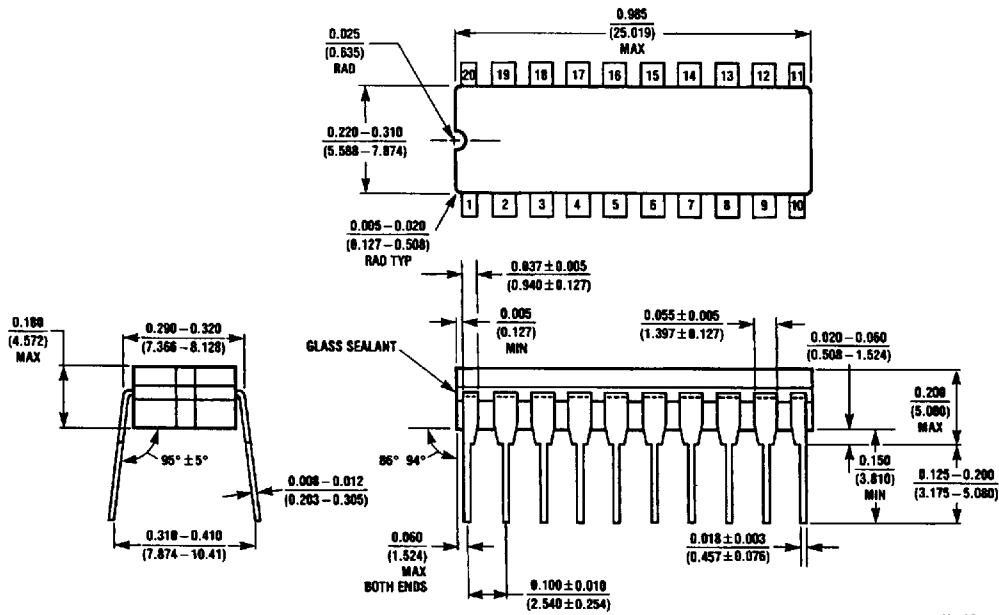
Logic Symbol



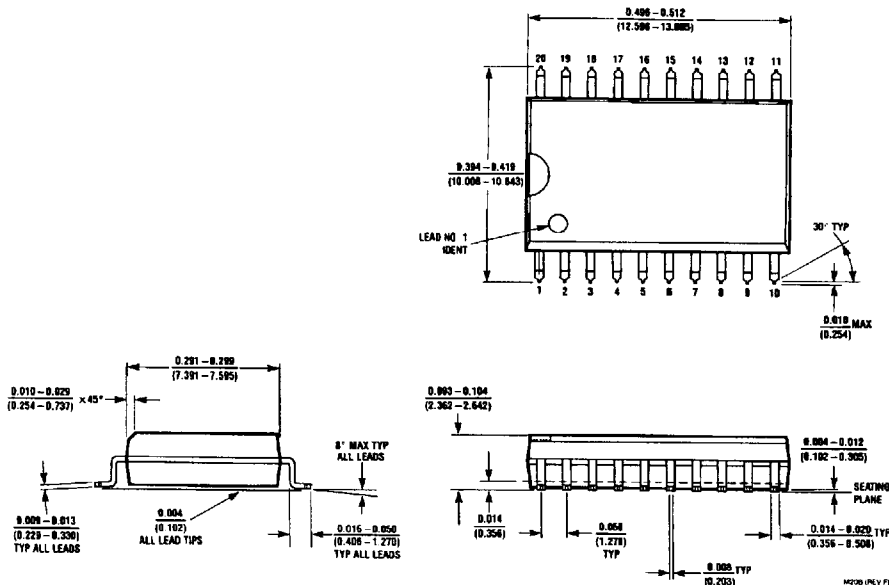
Logic Diagram



Physical Dimensions inches (millimeters)

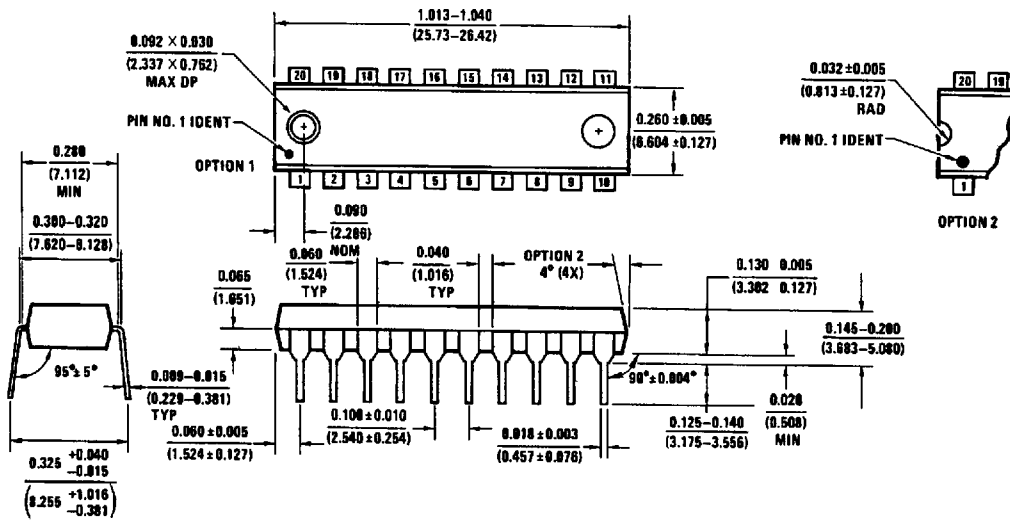


20-Lead Ceramic Dual-In-Line Package (J)
Order Number DM54LS323J
NS Package Number J20A



20-Lead Wide Small Outline Molded Package (M)
Order Number DM74LS323WM
NS Package Number M20B

Physical Dimensions inches (millimeters) (Continued)

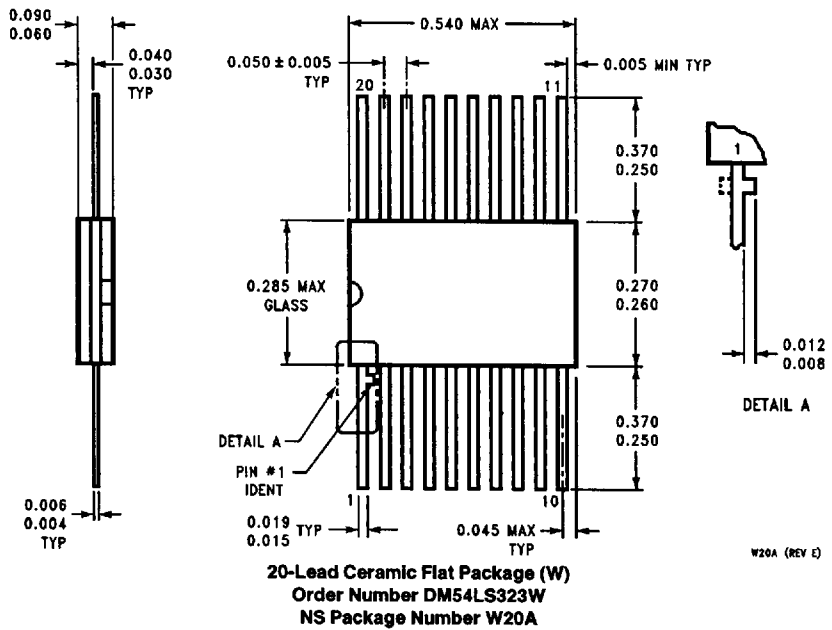


20-Lead Molded Dual-in-Line Package (N)
Order Number DM74LS323N
NS Package Number N20A

N20A (REV G)

**DM54LS323/DM74LS323 8-Bit Universal Shift/Storage Register
with Synchronous Reset and Common I/O Pins**


Physical Dimensions inches (millimeters) (Continued)



LIFE SUPPORT POLICY

NATIONAL'S PRODUCTS ARE NOT AUTHORIZED FOR USE AS CRITICAL COMPONENTS IN LIFE SUPPORT DEVICES OR SYSTEMS WITHOUT THE EXPRESS WRITTEN APPROVAL OF THE PRESIDENT OF NATIONAL SEMICONDUCTOR CORPORATION. As used herein:

1. Life support devices or systems are devices or systems which, (a) are intended for surgical implant into the body, or (b) support or sustain life, and whose failure to perform, when properly used in accordance with instructions for use provided in the labeling, can be reasonably expected to result in a significant injury to the user.
2. A critical component is any component of a life support device or system whose failure to perform can be reasonably expected to cause the failure of the life support device or system, or to affect its safety or effectiveness.

 <p>National Semiconductor Corporation 1111 West Bardin Road Arlington, TX 76017 Tel: 1(800) 272-9959 Fax: 1(800) 737-7018</p>	<p>National Semiconductor Europe Fax: (+49) 0-180-530 85 86 Email: cnjwge@tevm2.nsc.com Deutsch Tel: (+49) 0-180-530 85 85 English Tel: (+49) 0-180-532 78 32 Français Tel: (+49) 0-180-532 93 58 Italiano Tel: (+49) 0-180-534 16 80</p>	<p>National Semiconductor Hong Kong Ltd. 13th Floor, Straight Block, Ocean Centre, 5 Canton Rd, Tsimshatsui, Kowloon Hong Kong Tel: (852) 2737-1600 Fax: (852) 2736-9960</p>	<p>National Semiconductor Japan Ltd. Tel: 81-043-299-2309 Fax: 81-043-299-2408</p>
--	--	---	---

National does not assume any responsibility for use of any circuitry described, no circuit patent licenses are implied and National reserves the right at any time without notice to change said circuitry and specifications.