

National Semiconductor is now part of
Texas Instruments.

Search <http://www.ti.com/> for the latest technical
information and details on our current products and services.

LM34930

Ultra Small 33V, 1A Constant On-Time Buck Switching Regulator with Intelligent Current Limit

General Description

The LM34930 constant On-Time Step Down Switching Regulator features all the functions needed to implement a low cost, efficient, buck bias regulator capable of supplying in excess of 1A load current. This high voltage regulator contains an N-Channel Buck Switch, and is available in a μ SMD bumped package. The constant on-time regulation principle requires no loop compensation, results in fast load transient response, and simplifies circuit implementation. The operating frequency remains constant with line and load. The valley current limit results in a smooth transition from constant voltage to constant current mode when current limit is detected without the use of current limit foldback. To reduce the possibility of saturating the inductor the valley current limit threshold reduces as the input voltage increases, and the on-time is reduced when current limit is detected. Additional features include: Over-voltage indicator, Input over-voltage shutdown, Vcc under-voltage lock-out, thermal shutdown, and maximum duty cycle limiting.

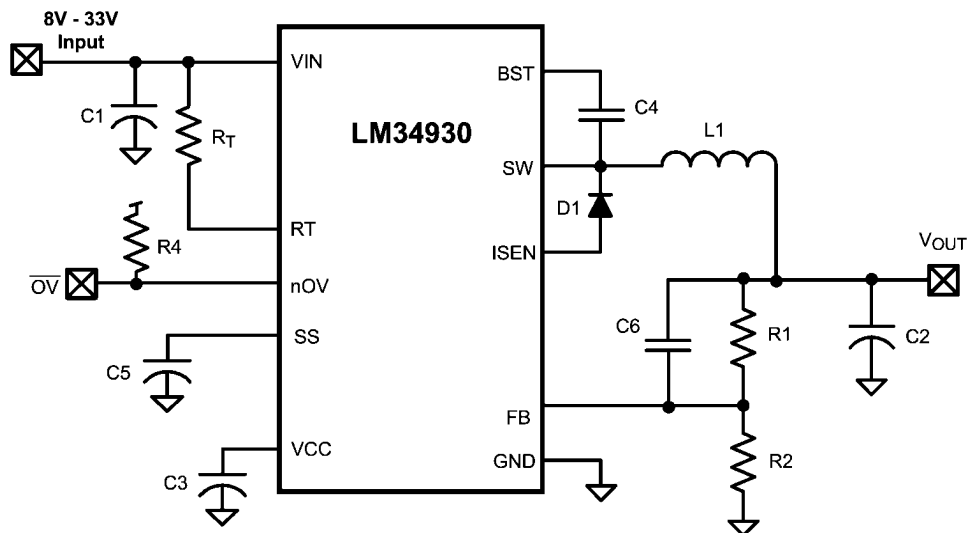
Features

- Operating Input Voltage Range: 8V to 33V
- Input over-voltage shutdown at 36V
- Input absolute maximum rating of 44V
- Integrated 1A N-Channel buck switch
- Adjustable output voltage from 2.5V
- Switching frequency adjustable to 2 MHz
- Switching frequency remains nearly constant with load current and input voltage
- Ultra-fast transient response
- No loop compensation required
- Adjustable soft-start timing
- Thermal shutdown
- Precision 2% feedback reference
- Input Over-Voltage indicator at 19V
- Current limit scheme helps prevent inductor from saturation in load fault conditions

Package

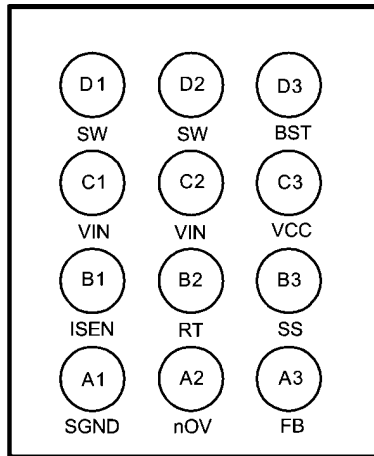
- Micro SMD –12, 1.77 mm x 2.1 mm

Typical Application, Basic Step-Down Regulator



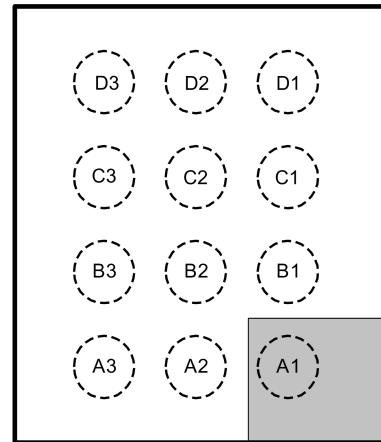
30060801

Connection Diagrams



Bump Side

30060802



Top View

30060803

Ordering Information

Order Number	Package Type	NSC Package Drawing	Supplied As
LM34930TL	Micro SMD12	TLA12LDA	250 Units on Tape and Reel
LM34930TLX	Micro SMD12	TLA12LDA	3000 Units on Tape and Reel

Pin Descriptions

Pin No.	Name	Description	Application Information
A1	GND	Ground	Ground for all internal circuitry
A2	nOV	Input over-voltage indicator	Open drain output switches low when Vin exceeds the over-voltage indicator threshold
A3	FB	Output voltage feedback	Internally connected to the regulation comparator. The regulation level is 2.52V.
B1	ISEN	Current sense	The re-circulating current flows out of this pin to the free-wheeling diode.
B2	RT	On-time control	An external resistor from VIN to this pin sets the buck switch on-time, and the switching frequency.
B3	SS	Soft-Start	An internal current source charges an external capacitor to provide the soft-start function.
C1, C2	VIN	Input supply voltage	Operating input range is 8V to 33V, with over-voltage shutdown internally set at 36V. Absolute maximum transient capability is 44V.
C3	VCC	Output of the internal bias regulator	Nominally regulated at 7V.
D1, D2	SW	Switching node	Internally connected to the buck switch source. Connect to the external inductor, free wheeling diode, and bootstrap capacitor.
D3	BST	Bootstrap capacitor connection of the buckswitch gate driver	Connect a 0.022 μ F capacitor from SW to this pin. The capacitor is charged during the buck switch off-time via an internal diode.

Absolute Maximum Ratings (Note 1)

If Military/Aerospace specified devices are required, please contact the National Semiconductor Sales Office/Distributors for availability and specifications.

V _{IN} to GND	44V
BST to GND	52V
SW to GND (Steady State)	-1.5V to 44V
BST to SW	14V
V _{CC} to GND	-0.3V to 8V
All Other Inputs to GND	-0.3 to 7V

Current out of ISEN	(See text)
ESD Rating (Note 2)	
Human Body Model	2kV
Storage Temperature Range	-65°C to +150°C
Junction Temperature	150°C

Operating Ratings (Note 1)

V _{IN} Voltage	8V to 33V
Junction Temperature	-40°C to + 125°C

Electrical Characteristics Specifications with standard type are for T_J = 25°C only; limits in **boldface** type apply over the Operating Junction Temperature (T_J) range of -40°C to + 125°C. Minimum and Maximum limits are guaranteed through test, design, or statistical correlation. Typical values represent the most likely parametric norm at T_J = 25°C, and are provided for reference purposes only. Unless otherwise stated the following conditions apply: V_{IN} = 12V, R_T = 50 kΩ.

Symbol	Parameter	Conditions	Min	Typ	Max	Units
Start-Up Regulator, V_{CC} (Note 3)						
V _{CCReg}	V _{CC} regulated voltage		6.6	7.0	7.4	V
	V _{IN} - V _{CC} dropout voltage	I _{CC} = 0 mA, V _{CC} = UVLO _{VCC} + 250 mV		1.3		V
	V _{CC} output impedance	V _{IN} = 8V		155		Ω
	V _{CC} current limit	V _{CC} = 0V		15		mA
UVLO _{VCC}	V _{CC} under-voltage lockout threshold	V _{CC} increasing		5.25		V
	UVLO _{VCC} hysteresis	V _{CC} decreasing		150		mV
	UVLO _{VCC} filter delay	100 mV overdrive		2		μs
I _Q	I _{IN} operating current	Non-switching, FB = 3V		0.8	1.5	mA
Switch Characteristics						
R _{ds(on)}	Buck Switch R _{ds(on)}	I _{TEST} = 200 mA		0.33	0.7	Ω
UVLO _{GD}	Gate Drive UVLO		2.7	3.7	4.5	V
	UVLO _{GD} hysteresis			300		mV
Softstart Pin						
V _{SS}	Pull-up voltage	SS open		2.52		V
I _{SS}	Internal current source			10		μA
V _{SS-SH}	Shutdown Threshold			70		mV
Current Limit						
I _{LIM}	Threshold	V _{IN} = 8V	0.95	1.15	1.35	A
		V _{IN} = 30V	0.90	1.1	1.30	
	Resistance from ISEN to SGND			98		mΩ
Over-Voltage Indicator						
nOV _{TH}	Threshold voltage at V _{IN}	V _{IN} increasing	17.5	19	20.0	V
nOV _{HYS}	Threshold hysteresis			1.95		V
nOV _{VOL}	Output low voltage	I _{noV} = 1 mA, V _{IN} = 22V		100	200	mV
nOV _{LKG}	Off state leakage	V _{noV} = 7V		0.1		μA
On Timer						
t _{ON - 1}	On-time	V _{IN} = 10V, R _T = 50 kΩ	190	292	430	ns
t _{ON - 2}	On-time	V _{IN} = 33V, R _T = 50 kΩ		127		ns
t _{ON - 3}	On-time (current limit)	V _{IN} = 10V, R _T = 50 kΩ		150		ns
Off Timer						
t _{OFF}	Minimum Off-time			90		ns

Symbol	Parameter	Conditions	Min	Typ	Max	Units
Regulation Comparator (FB Pin)						
V_{REF}	FB regulation threshold	SS Pin = steady state	2.470	2.52	2.575	V
	FB bias current			1		nA
Input Over-voltage Shutdown						
$V_{IN(OV)}$	Threshold voltage at V_{IN}	V_{IN} increasing	34.0	36	38.3	V
$V_{IN(OV)-HYS}$	Hysteresis			0.4		V
Thermal Shutdown						
T_{SD}	Thermal shutdown	T_J increasing		155		°C
	Thermal shutdown hysteresis			20		°C
Thermal Resistance						
θ_{JA}	Junction to Ambient 0 LFPM Air Flow	JEDEC 4 layer board (Note 4)		65		°C/W

Note 1: Absolute Maximum Ratings are limits beyond which damage to the device may occur. Operating Ratings are conditions under which operation of the device is intended to be functional. For guaranteed specifications and test conditions, see the Electrical Characteristics.

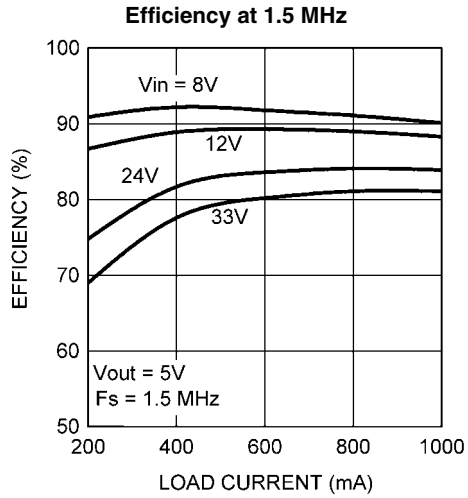
Note 2: The human body model is a 100pF capacitor discharged through a 1.5 k Ω resistor into each pin.

Note 3: V_{CC} provides self bias for the internal gate drive and control circuits. Device thermal limitations limit external loading

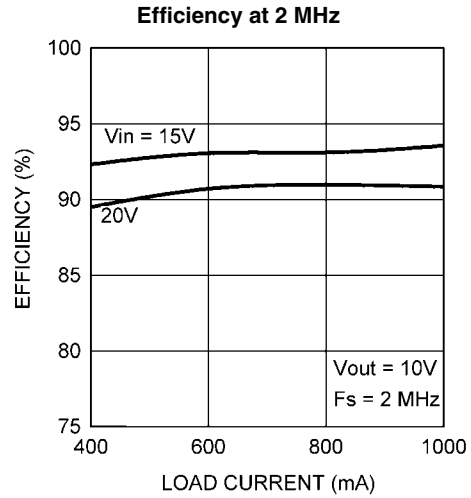
Note 4: JEDEC test board description can be found in JESD 51-7.

Note 5: For detailed information on soldering micro SMD packages, refer to the Application Note AN-1112.

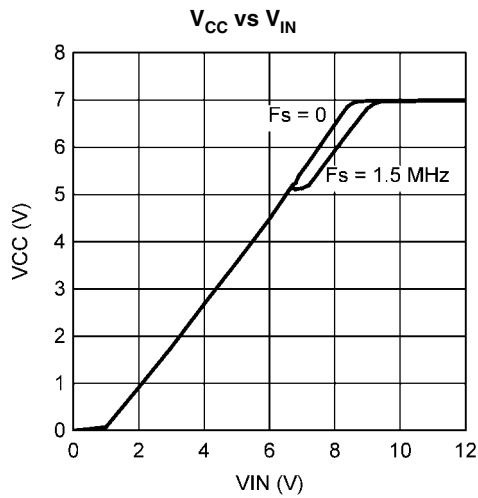
Typical Performance Characteristics



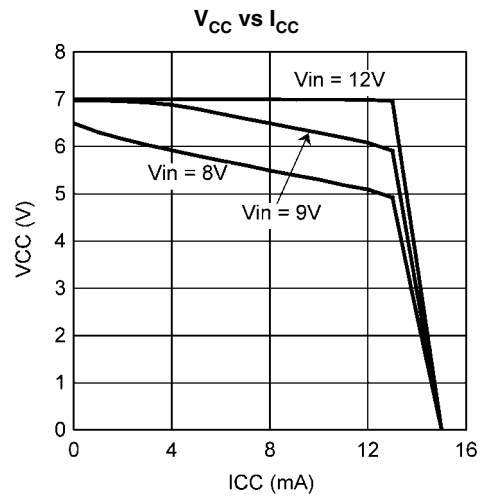
30060836



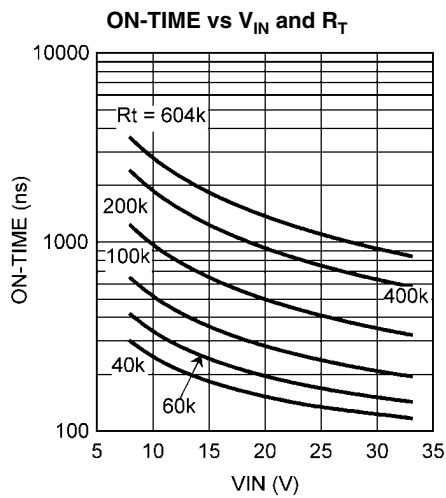
30060843



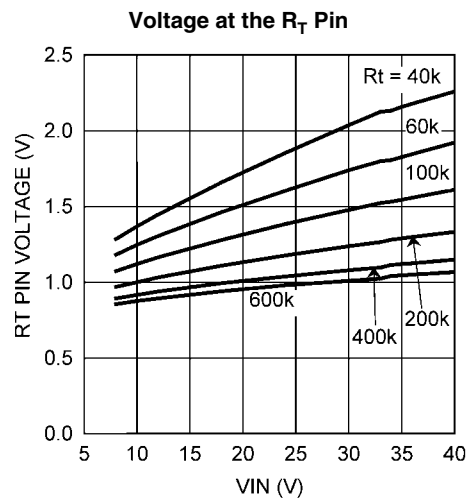
30060804



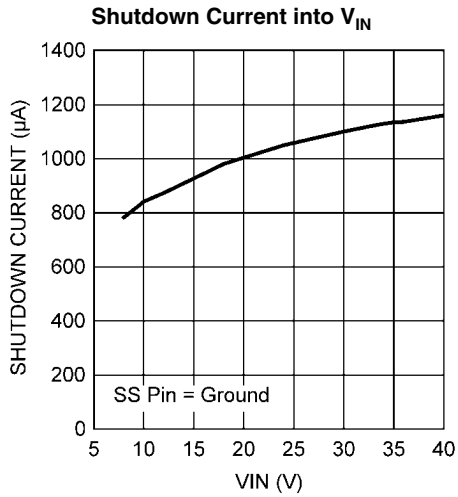
30060805



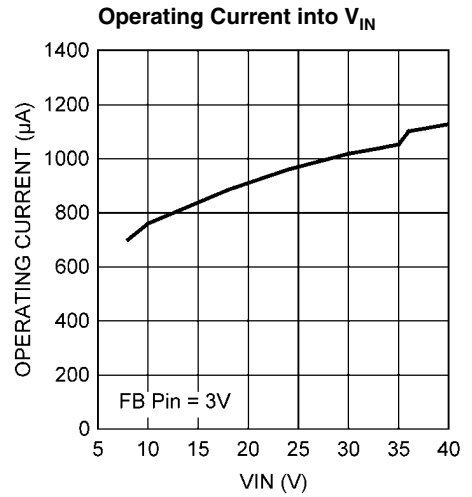
30060806



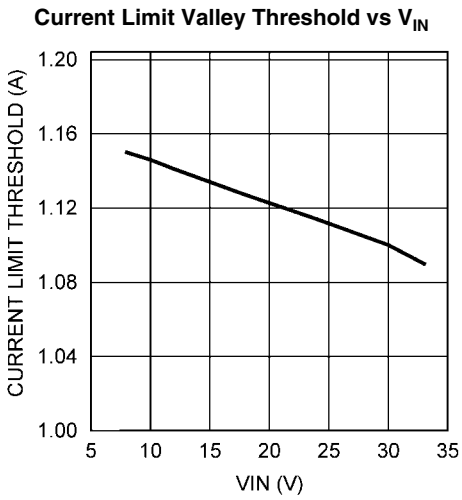
30060807



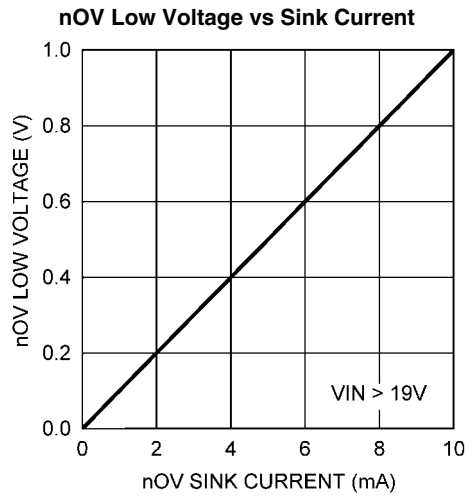
30060808



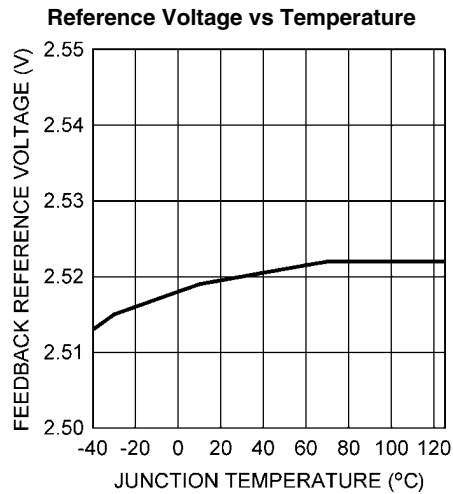
30060839



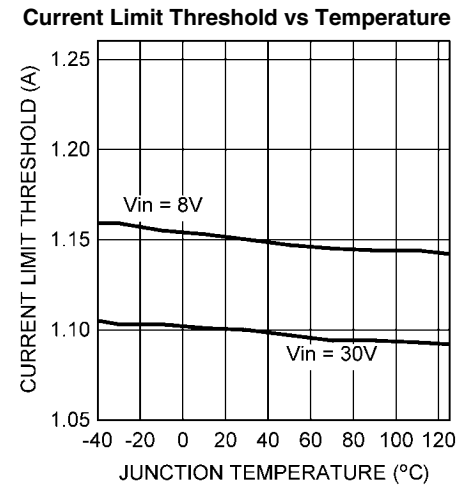
30060809



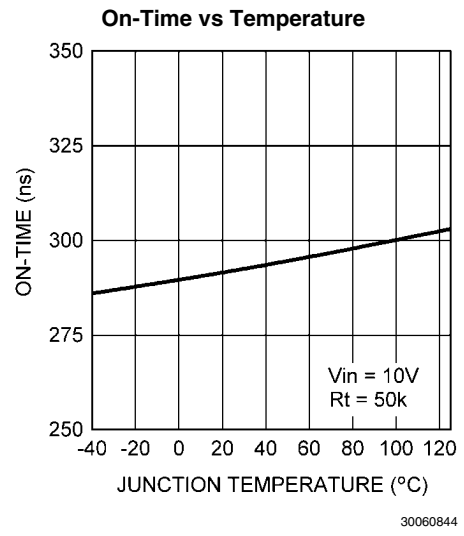
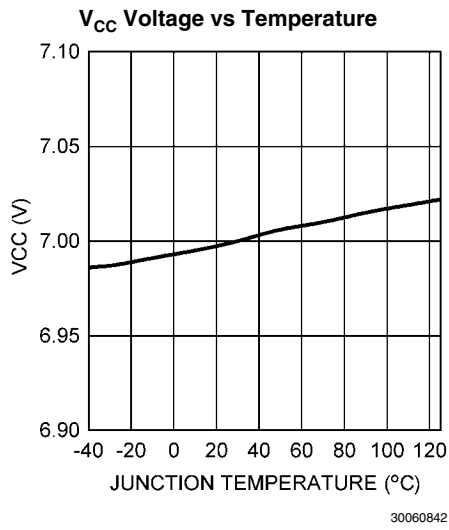
30060810



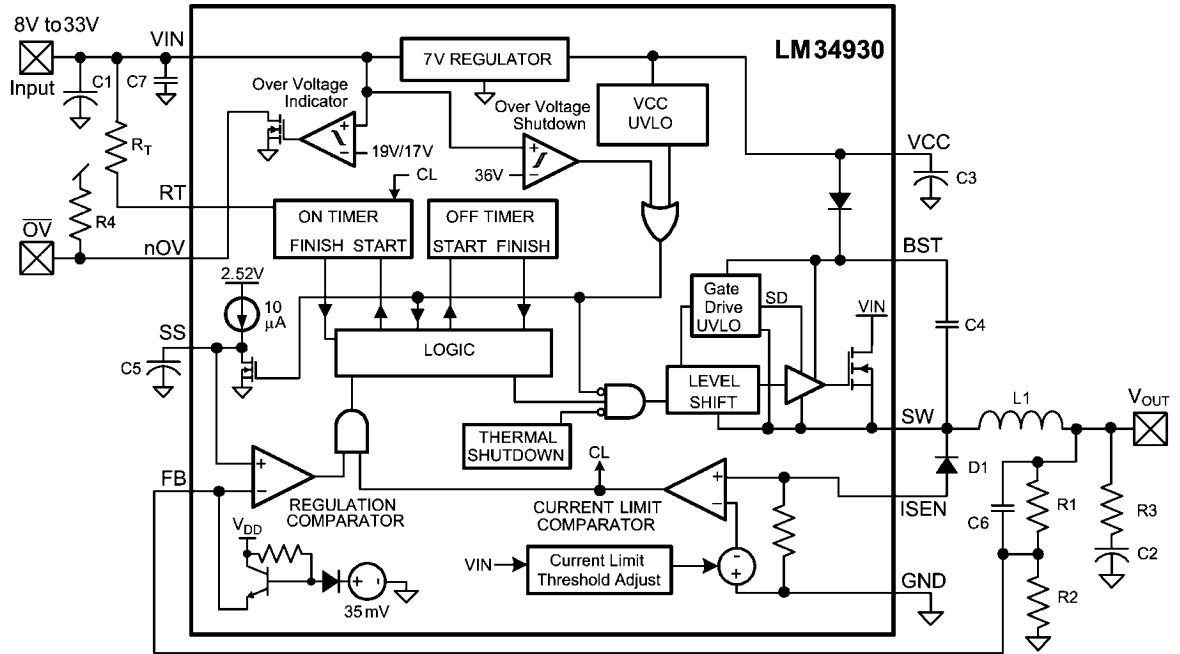
30060840



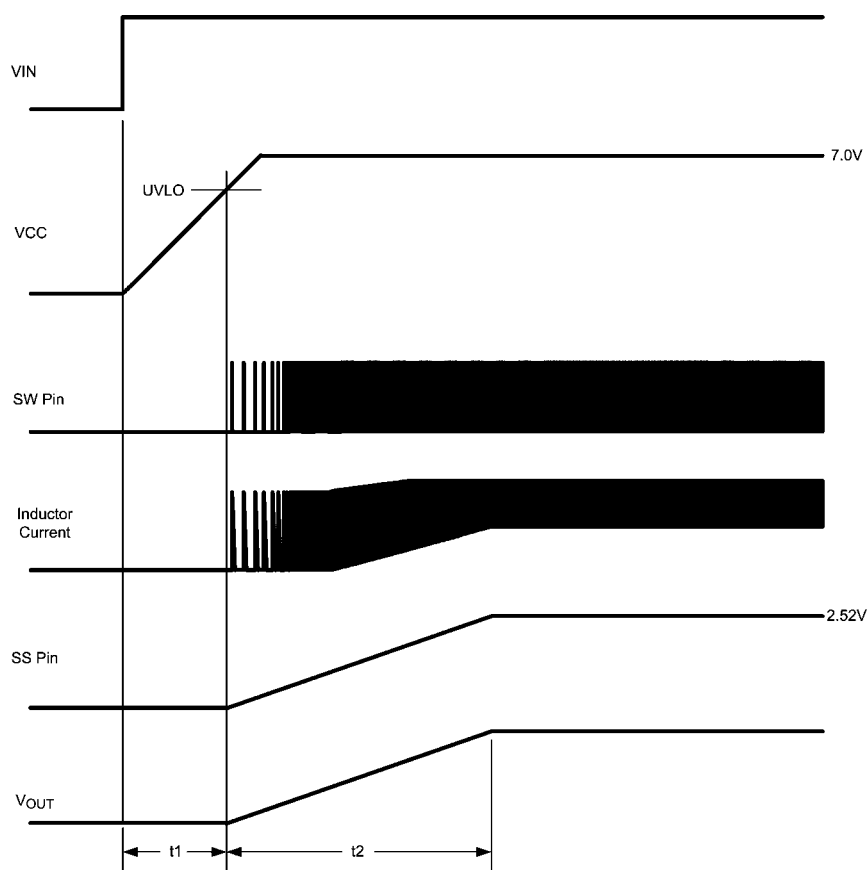
30060841



Typical Application Circuit and Block Diagram



30060811



30060812

FIGURE 1. Start Up Sequence

Functional Description

The LM34930 Constant On-Time Step Down Switching Regulator features all the functions needed to implement a low cost, efficient buck bias power converter capable of supplying at least 1.0A to the load. This high voltage regulator contains an N-Channel buck switch, is easy to implement, and is available in a 12 bump μ SMD package. The regulator's operation is based on a constant on-time control principle where the on-time is inversely proportional to the input voltage. This feature results in the operating frequency remaining relatively constant with load and input voltage variations. The constant on-time feedback control principle requires no loop compensation resulting in very fast load transient response. The valley current limit detection results in a smooth transition from constant voltage to constant current when current limit is reached. To aid in controlling excessive switch current due to a possible saturating inductor the valley current limit threshold reduces as the input voltage increases, and the on-time is reduced by $\approx 50\%$ when current limit is detected.

The LM34930 can be applied in numerous applications to efficiently step down higher voltages in non-isolated applications. Additional features include: Thermal shutdown, V_{CC} under-voltage lock-out, gate driver under-voltage lock-out, maximum duty cycle limiting, input over-voltage shutdown, and input over-voltage indicator.

Control Circuit Overview

The LM34930 buck regulator employs a control principle based on a comparator and a one-shot on-timer, with the output voltage feedback (FB) compared to an internal reference (2.52V). If the FB voltage is below the reference the buck switch is switched on for the one-shot timer period which is a function of the input voltage and the programming resistor (R_T). Following the on-time the switch remains off until the FB voltage falls below the reference, but never less than the minimum off-time forced by the off-time one-shot timer. When the FB pin voltage falls below the reference and the off-time one-shot period expires, the buckswitch is then turned on for another on-time one-shot period.

When in regulation, the LM34930 operates in continuous conduction mode at heavy load currents and discontinuous conduction mode at light load currents. In continuous conduction mode the inductor's current is always greater than zero, and the operating frequency remains relatively constant with load and line variations. The minimum load current for continuous conduction mode is one-half the inductor's ripple current amplitude. The approximate operating frequency is calculated as follows:

$$F_s = \frac{V_{OUT} \times (V_{IN} - 0.8V)}{[(4.15 \times 10^{-11}) \times (R_T + 0.5 \text{ k})] + ((V_{IN} - 0.8V) \times 65 \text{ ns})} \times V_{IN} \quad (1)$$

The buck switch duty cycle is approximately equal to:

$$DC = \frac{t_{ON}}{t_{ON} + t_{OFF}} = t_{ON} \times F_S = \frac{V_{OUT}}{V_{IN}} \quad (2)$$

In discontinuous conduction mode, the inductor's current reaches zero during the off-time because of the longer-than-normal off-time. The operating frequency is lower than in continuous conduction mode, and varies with load current. Conversion efficiency is maintained at light loads since the switching losses are reduced with the reduction in load and frequency. The approximate discontinuous operating frequency can be calculated as follows:

$$F_S = \frac{V_{OUT}^2 \times L_1 \times 1.16 \times 10^{21}}{R_L \times R_T^2} \quad (3)$$

where R_L = the load resistance, and L_1 is the circuit's inductor. The output voltage is set by the two feedback resistors (R_1 , R_2 in the Block Diagram). The regulated output voltage is calculated as follows:

$$V_{OUT} = 2.52 \times (R_1 + R_2) / R_2$$

Output voltage regulation requires a minimum of 25 mVp-p ripple voltage be supplied to the feedback pin (FB). In the typical application circuit shown with the Block Diagram, ripple is generated by the inductor's ripple current passing through R_3 in series with the output capacitor. The output ripple is passed to the FB pin by C_6 , avoiding attenuation by resistors R_1 and R_2 .

On-Time Timer

The on-time for the LM34930 is determined by the R_T resistor and the input voltage (V_{IN}), calculated from:

$$t_{ON} = \frac{4.15 \times 10^{-11} \times (R_T + 0.5 \text{ k})}{V_{IN} - 0.8V} + 65 \text{ ns} \quad (4)$$

The inverse relationship with V_{IN} results in a nearly constant frequency as V_{IN} is varied. To set a specific continuous conduction mode switching frequency (F_S), the R_T resistor is determined from the following:

$$R_T = \left[\left(\frac{V_{OUT}}{V_{IN} \times F_S} - 65 \text{ ns} \right) \times \frac{(V_{IN} - 0.8V)}{4.15 \times 10^{-11}} \right] - 0.5 \text{ k}\Omega \quad (5)$$

The on-time must be chosen greater than 90 ns for proper operation. Equations 1, 4 and 5 are valid only when the regulator is not in current limit. When the LM34930 operates in current limit, the on-time is reduced by $\approx 50\%$. This feature reduces the peak inductor current which may be excessively high if the load current and the input voltage are simultaneously high. This feature operates on a cycle-by-cycle basis until the load current is reduced and the output voltage resumes its normal regulated value.

The maximum continuous current into the RT pin must be less than 2 mA. For high frequency applications, the maximum switching frequency is limited at the maximum input voltage by the minimum on-time one-shot period. At minimum input voltage the maximum switching frequency is limited by the minimum off-time one-shot period, which may prevent achievement of the proper duty cycle.

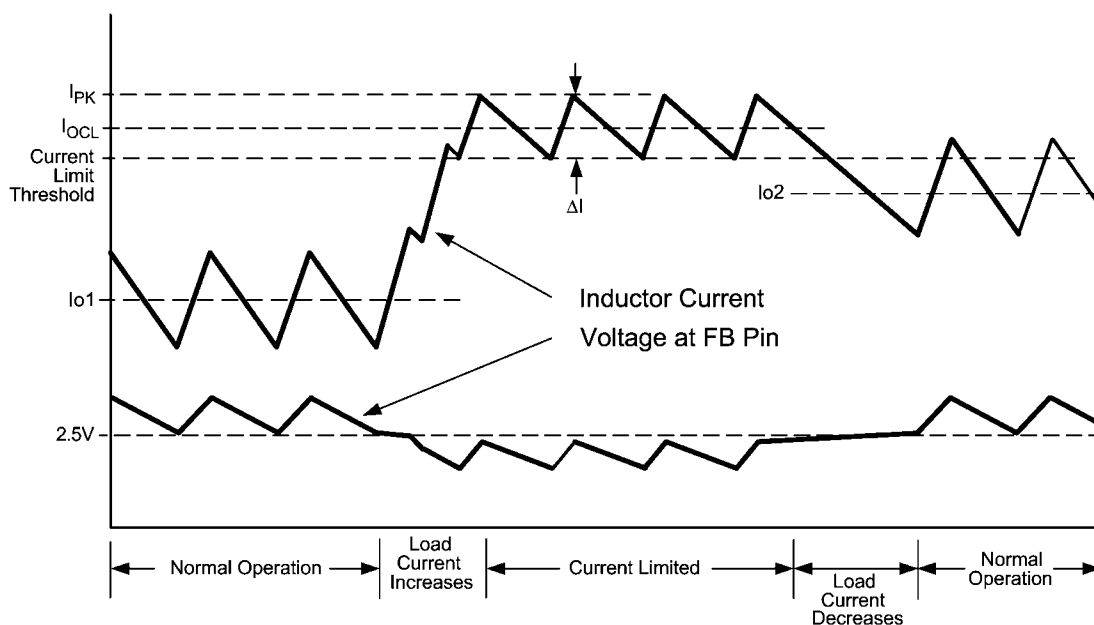
Current Limit

Current limit detection occurs during the off-time by monitoring the recirculating diode current flowing out of the ISEN pin. Referring to the Block Diagram, during the off-time the inductor current flows through the load, into the GND pin, through the internal sense resistor, out of ISEN and through D1 to the inductor. If that current exceeds the current limit threshold the current limit comparator delays the start of the next on-time period. The next on-time starts when the current out of ISEN reduces to the threshold **and** the voltage at FB is below 2.52V. The operating frequency is typically lower in the current limited condition due to longer-than-normal off-times.

The valley current limit threshold is a function of the input voltage (V_{IN}) as shown in the graph "Current Limit Valley Threshold vs. V_{IN} ". This feature reduces the inductor current's peak value at high line and load. To further reduce the inductor's peak current, the next on-time after current limit detection is reduced by $\approx 50\%$ if the voltage at the FB comparator is below its threshold when the inductor current falls below the current limit threshold (V_{OUT} is low due to current limiting).

Figure 2 illustrates the inductor current waveform during normal operation and in current limit. During the first "Normal Operation" interval the load current is I_{O1} , the average of the inductor current waveform. As the load resistance is reduced, the inductor current increases until the lower peak of the inductor ripple current exceeds the current limit threshold. During the "Current Limited" portion of Figure 2, each on-time is reduced by $\approx 50\%$, resulting in lower ripple amplitude for the inductor's current. During this time the LM34930 is in a constant current mode with an average load current equal to the current limit threshold plus half the ripple current (I_{OCL}), and the output voltage is below the normal regulated value. Normal operation resumes when the load current is reduced to I_{O2} , allowing V_{OUT} and the on-time to return to their normal values. Note that in the second period of "Normal Operation", even though the inductor's peak current exceeds the current limit threshold during part of each cycle, the circuit is not in current limit since the inductor current falls below the current limit threshold during each off time.

The peak current allowed through the buck switch, and the ISEN pin, is 2A, and the maximum allowed average current is 1.5A.



30060818

FIGURE 2. Inductor Current - Normal and Current Limit Operation

Startup Regulator, V_{CC}

The startup bias regulator is integral to the LM34930. The input pin (V_{IN}) can be connected directly to the main power source, and has transient capability to 44V. The V_{CC} output is regulated at 7.0V, and is current limited to approximately 15 mA. Upon power up, the regulator sources current into the external capacitor at V_{CC} . When the voltage on the V_{CC} pin reaches the under-voltage lock-out (UVLO) threshold, the buck switch is enabled and the Soft-start pin is released to allow the Soft-start capacitor to charge. The minimum input voltage is determined by the regulator's dropout voltage, the V_{CC} UVLO falling threshold, and the switching frequency. When V_{CC} falls below the falling threshold the V_{CC} UVLO activates to shut off the buck switch.

Over-Voltage Indicator

The nOV pin, an open drain logic output, switches low when the voltage at V_{IN} exceeds 19V. The over-voltage indicator comparator provides 1.95V hysteresis to reject noise and ripple on the V_{IN} pin. A pull-up resistor is required at the nOV output pin to a voltage that does not exceed 7 volts. The pull-up voltage can exceed the voltage at V_{IN} . When nOV is low, the current into the pin must not exceed 10 mA.

Input Over-Voltage Shutdown

If the input voltage at V_{IN} increases above 36V an internal comparator disables the buck switch, and grounds the soft-start pin. The over-voltage shutdown comparator provides 400 mV hysteresis to reject noise and ripple on the V_{IN} pin. Normal operation resumes when the voltage at V_{IN} is reduced below the lower threshold.

N - Channel Buck Switch and Driver

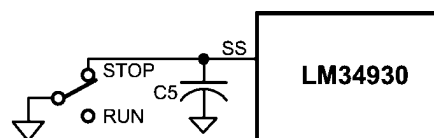
The LM34930 integrates an N-Channel buck switch and associated floating high voltage gate driver. The gate driver

circuit works in conjunction with an external bootstrap capacitor and an internal high voltage diode. A 0.022 μF capacitor (C_4) connected between BST and SW provides the voltage to the driver during the on-time. During each off-time, the SW pin is at approximately -1V, and C_4 is recharged from V_{CC} through the internal diode. The minimum off-time ensures a sufficient time each cycle to recharge the bootstrap capacitor.

Soft-Start, Remote Shutdown

The soft-start feature allows the converter to gradually reach a steady state operating point, thereby reducing start-up stresses and current surges. Upon turn-on, when V_{CC} reaches its under-voltage threshold, an internal 10 μA current source charges the external capacitor at the SS pin to 2.52V (t_2 in Figure 1). The ramping voltage at SS ramps the non-inverting input of the regulation comparator, and the output voltage, in a controlled manner.

An internal switch grounds the SS pin if V_{CC} is below its under-voltage lockout threshold, or if the input voltage at V_{IN} is above the Over-Voltage Shutdown threshold. The SS pin can be used to shutdown the LM34930 by grounding the pin as shown in Figure 3. Releasing the pin allows normal operation to resume.



30060819

FIGURE 3. Shutdown Implementation

Thermal Shutdown

The LM34930 should be operated such that the junction temperature does not exceed 125°C. If the junction temperature increases above that, an internal Thermal Shutdown circuit activates typically at 155°C. In thermal shutdown the controller enters a low power non-switching state by disabling the buck switch. This feature helps prevent catastrophic failures from accidental device overheating. When the junction temperature reduces below 135°C (typical hysteresis = 20°C) normal operation resumes.

Applications Information

EXTERNAL COMPONENTS

The procedure for calculating the external components is illustrated with the following design example. Referring to the Block Diagram, the circuit is to be configured for the following specifications:

- $V_{OUT} = 5V$
- $V_{IN} = 8V$ to $30V$
- Minimum load current for continuous conduction mode ($I_{OUT(min)}$) = 200 mA
- Maximum load current ($I_{OUT(max)}$) = 1000 mA
- Switching Frequency (F_S) = 1.5 MHz
- Soft-start time = 5 ms

R1 and R2: These resistors set the output voltage. The ratio of the feedback resistors is calculated from:

$$R1/R2 = (V_{OUT}/2.52V) - 1$$

For this example, $R1/R2 = 0.98$. R1 and R2 should be chosen from standard value resistors in the range of $1.0\text{ k}\Omega$ – $10\text{ k}\Omega$ which satisfy the above ratio. For this example, $2.32\text{ k}\Omega$ is chosen for R1 and $2.37\text{ k}\Omega$ is chosen for R2.

R_T: This resistor sets the on-time, and (by default) the switching frequency. First check that the desired frequency does not require an on-time or off-time shorter than the minimum allowed (90 ns each). The minimum on-time occurs at the maximum V_{IN} :

$$t_{ON(min)} = \frac{V_{OUT}}{V_{IN(max)} \times F_S} = \frac{5V}{30V \times 1.5\text{ MHz}} = 111\text{ ns}$$

The minimum off-time occurs at the minimum V_{IN} . For this example

$$t_{OFF(min)} = \frac{V_{IN(min)} - V_{OUT}}{V_{IN(min)} \times F_S} = \frac{8V - 5V}{8V \times 1.5\text{ MHz}} = 250\text{ ns}$$

This off-time is acceptable since it is significantly greater than the 90 ns minimum off-time. The R_T resistor is calculated from equation 5 using the minimum input voltage:

$$R_T = \left[\left(\frac{5V}{8V \times 1.5\text{ MHz}} - 65\text{ ns} \right) \times \frac{(8V - 0.8V)}{4.15 \times 10^{-11}} \right] - 0.5\text{ k}\Omega = 60.5\text{ k}\Omega$$

A standard value $60.4\text{ k}\Omega$ resistor is selected, resulting in a nominal frequency of 1.50 MHz . The minimum on-time calculates to 152 ns at $V_{in} = 30V$, which is acceptably longer than the minimum allowed 90 ns . The maximum on-time calculates to 416 ns at $V_{in} = 8V$.

L1: The main parameter controlled by the inductor is the inductor current ripple amplitude (I_{OR}). The minimum load current is used to determine the maximum allowable ripple in order to maintain continuous conduction mode (the lower peak does not reach 0 mA). This is not a requirement of the LM34930, but serves as a guideline for selecting L1. For this example, the maximum ripple current should be less than:

$$I_{OR(MAX)} = 2 \times I_{OUT(min)} = 400\text{ mAp-p} \quad (6)$$

For applications where the minimum load current is zero, a good starting point for allowable ripple is 20% of the maximum load current. In this case substitute 20% of $I_{OUT(max)}$ for $I_{OUT(min)}$ in equation 6. The ripple amplitude calculated in Equation 6 is then used in the following equation:

$$L1_{(min)} = \frac{t_{on(min)} \times (V_{IN(max)} - V_{OUT})}{I_{OR(max)}} = 9.5\text{ }\mu\text{H} \quad (7)$$

A standard value $10\text{ }\mu\text{H}$ inductor is chosen. The maximum ripple amplitude, which occurs at maximum V_{IN} , calculates to 379 mAp-p , and the peak current is 1190 mA at maximum load current. Ensure the selected inductor is rated for this peak current.

C2, R3 and C6: C2 should typically be no smaller than $3.3\text{ }\mu\text{F}$, although that is dependent on the frequency and the desired output characteristics. C2 should be a low ESR good quality ceramic capacitor. Experimentation is usually necessary to determine the minimum value for C2, as the nature of the load may require a larger value. A load which creates significant transients requires a larger value for C2 than a non-varying load. Ripple voltage is created at V_{OUT} as the inductor's ripple current passes through R3 into C2. That ripple voltage is AC coupled directly to the FB pin by C6 without the attenuation of R1 and R2, allowing the minimum ripple at V_{OUT} to be set at 25 mVp-p . The minimum inductor ripple current occurs at minimum V_{IN} , and is calculated by re-arranging equation 7 to the following:

$$I_{OR(min)} = \frac{t_{ON(max)} \times (V_{IN(min)} - V_{OUT})}{L1} = 125\text{ mAp-p} \quad (8)$$

The minimum value for R3 is then equal to $25\text{ mV}/125\text{ mA} = 0.2\Omega$. The next larger standard value resistor should be used for R3 to allow for tolerances. The minimum value for C6 is equal to:

$$C6 = \frac{3 \times t_{ON(max)}}{(R1//R2)} = 1064\text{ pF} \quad (9)$$

The next larger standard value capacitor should be used for C6.

C1 and C7: The purpose of C1 is to supply most of the switch current during the on-time, and limit the voltage ripple at V_{IN} , since it is assumed the voltage source feeding V_{IN} has some amount of source impedance. At maximum load current, when the buck switch turns on, the current into V_{IN} suddenly increases to the lower peak of the inductor's ripple current, then ramps up to the upper peak, then drops to zero at turn-off. The average current during the on-time is the average load current. For a worst case calculation, C1 must supply this average load current during the maximum on-time, without letting the voltage at the V_{IN} pin drop below a minimum operating level of $7.5V$. The minimum value for C1 is calculated from:

$$C1 = \frac{I_{OUT(max)} \times t_{ON}}{\Delta V} = 0.83 \mu\text{F}$$

where t_{ON} is the maximum on-time, and ΔV is the allowable ripple voltage at V_{IN} (0.5V at $V_{IN} = 8\text{V}$). The purpose of C7 is to minimize transients and ringing due to long lead inductance leading to the VIN pin. A low ESR 0.1 μF ceramic chip capacitor is recommended, and C7 must be located close to the VIN and GND pins.

C3: The capacitor at the VCC pin provides noise filtering and stability for the V_{CC} regulator. C3 should be no smaller than 0.1 μF , and should be a good quality, low ESR ceramic capacitor. The value of C3, and the V_{CC} current limit, determine a portion of the turn-on-time ($t1$ in Figure 1).

C4: The recommended value for C4 is 0.022 μF . A high quality ceramic capacitor with low ESR is recommended as C4 supplies a surge current to charge the buck switch gate at each turn-on. A low ESR also helps ensure a complete recharge during each off-time.

C5: The capacitor at the SS pin determines the soft-start time, i.e. the time for the output voltage to reach its final value ($t2$ in Figure 1). For soft-start time of 5 ms, the capacitor value is determined from the following:

$$C5 = \frac{5 \text{ ms} \times 10 \mu\text{A}}{2.52\text{V}} = 0.02 \mu\text{F}$$

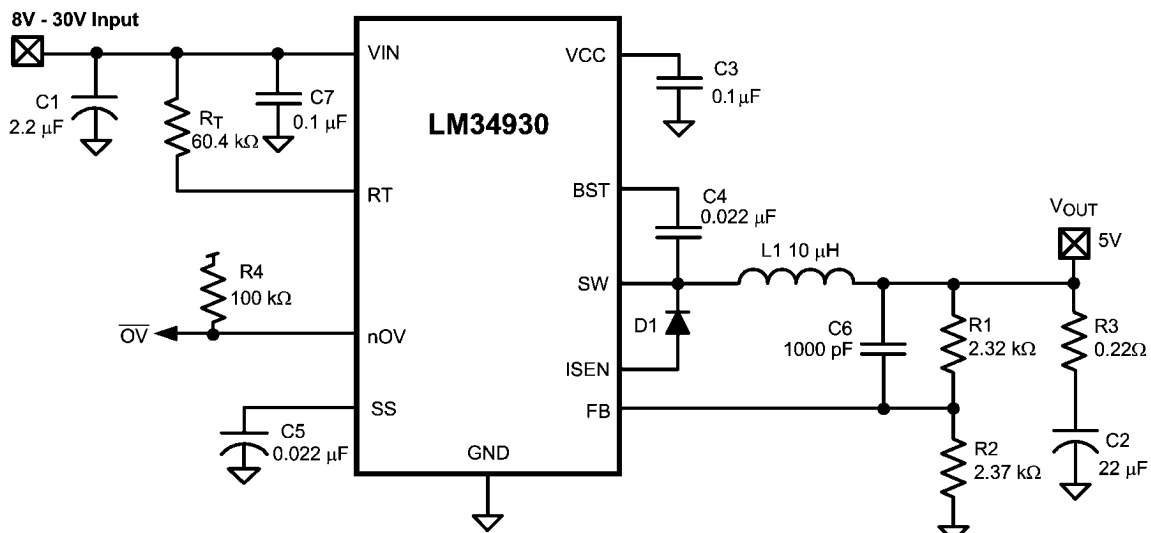
D1: A Schottky diode is recommended. Ultra-fast recovery diodes are not recommended as the high speed transitions at the SW pin may affect the regulator's operation due to the diode's reverse recovery transients. The diode must be rated for the maximum input voltage, the maximum load current, and the peak current which occurs when the current limit and maximum ripple current are reached simultaneously. The diode's average power dissipation is calculated from:

$$P_{D1} = V_F \times I_{OUT} \times (1-D)$$

where V_F is the diode's forward voltage drop, and D is the on-time duty cycle.

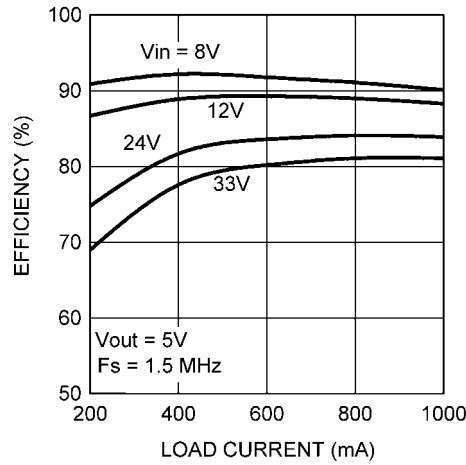
FINAL CIRCUIT

The final circuit is shown in Figure 4, and its performance is shown in Figure 5 and Figure 6. The current limit measured approximately 1.28A at $V_{in} = 8\text{V}$, and 1.18A at $V_{in} = 30\text{V}$. The output voltage ripple amplitude measured 32 mVp-p at $V_{in} = 8\text{V}$, and 87 mVp-p at $V_{in} = 30\text{V}$.

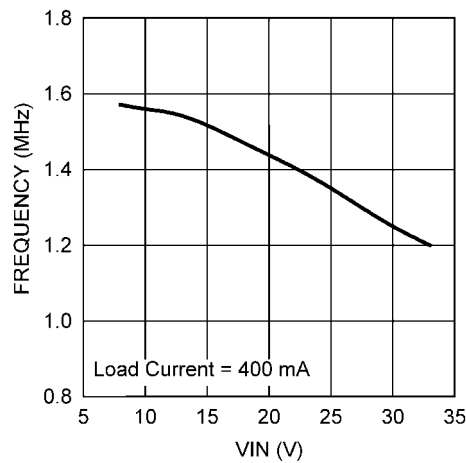


30060828

FIGURE 4. Example Circuit



30060836

FIGURE 5. Efficiency vs. Load Current and V_{IN} (Circuit of Figure 4)

30060837

FIGURE 6. Frequency vs. V_{IN} (Circuit of Figure 4)

ALTERNATE OUTPUT RIPPLE CONFIGURATIONS

For applications which require lower levels of ripple at V_{OUT} , or for those which can accept higher levels of ripple while using one less capacitor, the following two alternatives are available.

a) Minimum ripple configuration: If the application requires a lower value of ripple at V_{OUT} (<25 mVp-p), the circuit of Figure 7 can be used. R3 is removed, and the resulting output ripple voltage is determined by the inductor's ripple current and the characteristics of C2 (value and ESR). RA and CA are chosen to generate a sawtooth waveform at their junction, and that voltage is AC-coupled to the FB pin via CB. To determine the values for RA, CA and CB, use the following procedure:

- Calculate the voltage

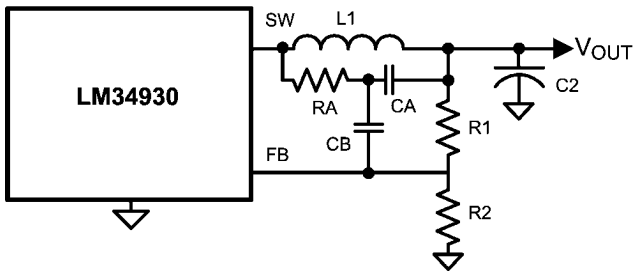
$$V_A = V_{OUT} - (V_{SW} \times (1 - (V_{OUT}/V_{IN(min)})))$$

where V_{SW} is the absolute value of the voltage at the SW pin during the off-time (typically 0.6V to 1V). V_A is the DC voltage at the RA/CA junction, and is used in the next equation.

Calculate the product

$$RA \times CA = \frac{(V_{IN(min)} - V_A) \times t_{ON}}{\Delta V}$$

where t_{ON} is the maximum on-time (at minimum input voltage), and ΔV is the desired ripple amplitude at the RA/CA junction (typically 40-50 mV). RA and CA are then chosen from standard value components to satisfy the above product. Typically CA is 3000 pF to 10,000 pF, and RA is 10 k Ω to 300 k Ω . CB is then chosen to be large in comparison to CA, typically 0.1 μ F. The values of R1 and R2 should each be towards the upper end of the 1 k Ω to 10 k Ω range.



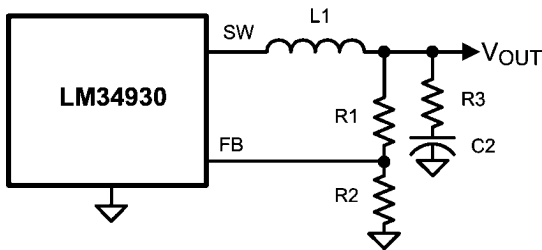
30060832

FIGURE 7. Minimum Output Ripple Using Ripple Injection

b) Slightly higher ripple – In the basic configuration in Figure 8 C6 is removed and R3 is increased since the ripple amplitude from V_{OUT} to FB is attenuated by R1 and R2. The ripple at V_{OUT} is created by the inductor's ripple current passing through R3, and coupled to the FB pin through the feedback resistors (R1, R2). Since the LM34930 requires a minimum of 25 mVp-p ripple at the FB pin, the ripple required at V_{OUT} is 25 mV divided by the attenuation of the feedback resistors. The minimum ripple current ($I_{OR(min)}$) is calculated by re-arranging Equation 7 using $t_{ON(max)}$ and $V_{IN(min)}$. The minimum value for R3 is calculated from:

$$R3_{(min)} = \frac{25 \text{ mV} \times (R1 + R2)}{R2 \times I_{OR (min)}}$$

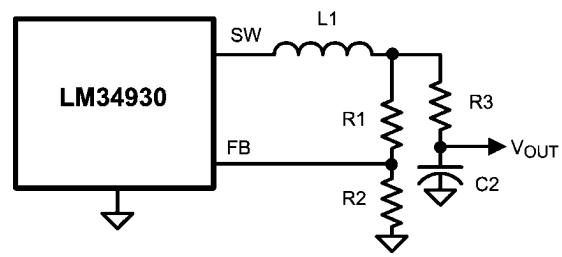
The next larger standard value resistor should be used for R3.



30060833

FIGURE 8. Basic Ripple Configuration

c) Alternate minimum ripple configuration: The low ripple alternative circuit in Figure 9 is the same as that in Figure 8, except the output voltage is taken from the junction of R3 and C2. The ripple at V_{OUT} no longer includes the ripple across R3. It is determined by the inductor's ripple current and the characteristics of C2. However, R3 slightly degrades the load regulation by effectively increasing the output resistance of the regulator. This circuit may be suitable if the load current is fairly constant. R3 is calculated as described in Alternate b above, and must be rated to carry the maximum load current.



30060835

FIGURE 9. Alternate Minimum Output Ripple Configuration

Minimum Load Current

The LM34930 requires a minimum load current of 1 mA. If the load current falls below that level, the bootstrap capacitor (C4) may discharge during the long off-time, and the circuit will either shutdown, or cycle on and off at a low frequency. If the load current is expected to drop below 1 mA in the application, R1 and R2 should be chosen with low enough values that they provide additional loading to maintain the minimum load requirement.

PC BOARD LAYOUT

Refer to application note AN-1112 for PC board guidelines for the Micro SMD package.

The LM34930 regulation, over-voltage, and current limit comparators are very fast, and respond to short duration noise pulses. Layout considerations are therefore critical for optimum performance. The layout must be as neat and compact as possible, and all of the components must be as close as possible to their associated pins. The two major current loops conduct currents which switch very fast, and therefore those loops should be as small as possible to minimize conducted and radiated EMI. The first loop is formed by C1, through the VIN to SW pins, L1, C2, and back to C1. The second current loop is formed by D1, L1, C2 and the GND and ISEN pins. The ground connection from the LM34930's GND pin to C1 should be as short and direct as possible.

The power dissipation within the LM34930 can be approximated by determining the total conversion loss ($P_{IN} - P_{OUT}$), and then subtracting the power losses in the free-wheeling diode and the inductor. The power loss in the diode is approximately:

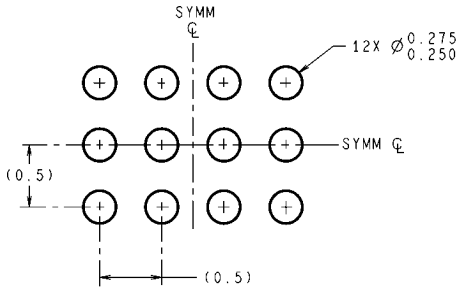
$$P_{D1} = I_{out} \times V_F \times (1-D)$$

where I_{out} is the load current, V_F is the diode's forward voltage drop, and D is the on-time duty cycle. The power loss in the inductor is approximately:

$$P_{L1} = I_{out}^2 \times R_{LDC} \times 1.1$$

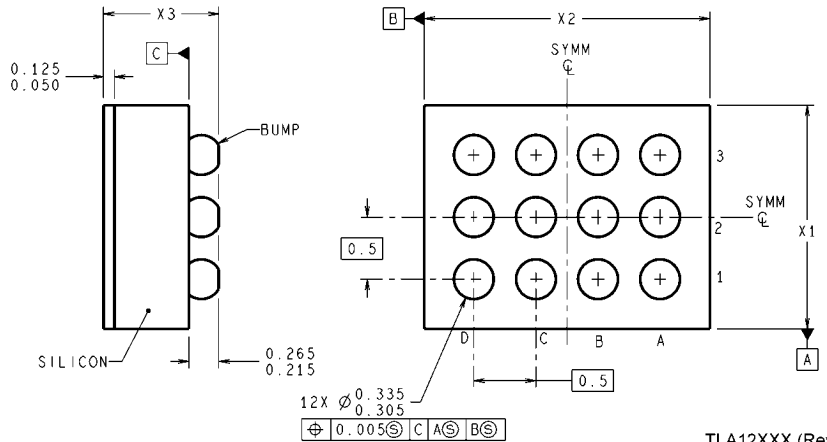
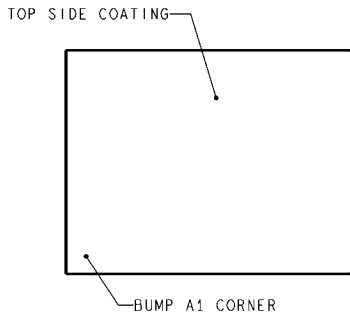
where R_{LDC} is the inductor's DC resistance, and the 1.1 factor is an approximation for the AC losses. If it is expected that the internal dissipation of the LM34930 will produce excessive junction temperatures during normal operation, good use of the PC board's ground plane can help to dissipate heat. Additionally the use of wide PC board traces, where possible, can help conduct heat away from the IC pins. Judicious positioning of the PC board within the end product, along with the use of any available air flow (forced or natural convection) can help reduce the junction temperature.

Physical Dimensions inches (millimeters) unless otherwise noted



DIMENSIONS ARE IN MILLIMETERS
DIMENSIONS IN () FOR REFERENCE ONLY

LAND PATTERN RECOMMENDATION



TLA12XXX (Rev C)

Note: X1 = 1.768 mm, ±0.030 mm
X2 = 2.073 mm, ±0.030 mm
X3 = 0.60 mm, ±0.075 mm

12 Bump micro SMD Package
NS Package Number TLA12LDA

Notes

LM34930

Notes

For more National Semiconductor product information and proven design tools, visit the following Web sites at:

Products		Design Support	
Amplifiers	www.national.com/amplifiers	WEBENCH	www.national.com/webench
Audio	www.national.com/audio	Analog University	www.national.com/AU
Clock Conditioners	www.national.com/timing	App Notes	www.national.com/appnotes
Data Converters	www.national.com/adc	Distributors	www.national.com/contacts
Displays	www.national.com/displays	Green Compliance	www.national.com/quality/green
Ethernet	www.national.com/ethernet	Packaging	www.national.com/packaging
Interface	www.national.com/interface	Quality and Reliability	www.national.com/quality
LVDS	www.national.com/lvds	Reference Designs	www.national.com/refdesigns
Power Management	www.national.com/power	Feedback	www.national.com/feedback
Switching Regulators	www.national.com/switchers		
LDOs	www.national.com/lido		
LED Lighting	www.national.com/led		
PowerWise	www.national.com/powerwise		
Serial Digital Interface (SDI)	www.national.com/sdi		
Temperature Sensors	www.national.com/tempsensors		
Wireless (PLL/VCO)	www.national.com/wireless		

THE CONTENTS OF THIS DOCUMENT ARE PROVIDED IN CONNECTION WITH NATIONAL SEMICONDUCTOR CORPORATION ("NATIONAL") PRODUCTS. NATIONAL MAKES NO REPRESENTATIONS OR WARRANTIES WITH RESPECT TO THE ACCURACY OR COMPLETENESS OF THE CONTENTS OF THIS PUBLICATION AND RESERVES THE RIGHT TO MAKE CHANGES TO SPECIFICATIONS AND PRODUCT DESCRIPTIONS AT ANY TIME WITHOUT NOTICE. NO LICENSE, WHETHER EXPRESS, IMPLIED, ARISING BY ESTOPPEL OR OTHERWISE, TO ANY INTELLECTUAL PROPERTY RIGHTS IS GRANTED BY THIS DOCUMENT.

TESTING AND OTHER QUALITY CONTROLS ARE USED TO THE EXTENT NATIONAL DEEMS NECESSARY TO SUPPORT NATIONAL'S PRODUCT WARRANTY. EXCEPT WHERE MANDATED BY GOVERNMENT REQUIREMENTS, TESTING OF ALL PARAMETERS OF EACH PRODUCT IS NOT NECESSARILY PERFORMED. NATIONAL ASSUMES NO LIABILITY FOR APPLICATIONS ASSISTANCE OR BUYER PRODUCT DESIGN. BUYERS ARE RESPONSIBLE FOR THEIR PRODUCTS AND APPLICATIONS USING NATIONAL COMPONENTS. PRIOR TO USING OR DISTRIBUTING ANY PRODUCTS THAT INCLUDE NATIONAL COMPONENTS, BUYERS SHOULD PROVIDE ADEQUATE DESIGN, TESTING AND OPERATING SAFEGUARDS.

EXCEPT AS PROVIDED IN NATIONAL'S TERMS AND CONDITIONS OF SALE FOR SUCH PRODUCTS, NATIONAL ASSUMES NO LIABILITY WHATSOEVER, AND NATIONAL DISCLAIMS ANY EXPRESS OR IMPLIED WARRANTY RELATING TO THE SALE AND/OR USE OF NATIONAL PRODUCTS INCLUDING LIABILITY OR WARRANTIES RELATING TO FITNESS FOR A PARTICULAR PURPOSE, MERCHANTABILITY, OR INFRINGEMENT OF ANY PATENT, COPYRIGHT OR OTHER INTELLECTUAL PROPERTY RIGHT.

LIFE SUPPORT POLICY

NATIONAL'S PRODUCTS ARE NOT AUTHORIZED FOR USE AS CRITICAL COMPONENTS IN LIFE SUPPORT DEVICES OR SYSTEMS WITHOUT THE EXPRESS PRIOR WRITTEN APPROVAL OF THE CHIEF EXECUTIVE OFFICER AND GENERAL COUNSEL OF NATIONAL SEMICONDUCTOR CORPORATION. As used herein:

Life support devices or systems are devices which (a) are intended for surgical implant into the body, or (b) support or sustain life and whose failure to perform when properly used in accordance with instructions for use provided in the labeling can be reasonably expected to result in a significant injury to the user. A critical component is any component in a life support device or system whose failure to perform can be reasonably expected to cause the failure of the life support device or system or to affect its safety or effectiveness.

National Semiconductor and the National Semiconductor logo are registered trademarks of National Semiconductor Corporation. All other brand or product names may be trademarks or registered trademarks of their respective holders.

Copyright© 2008 National Semiconductor Corporation

For the most current product information visit us at www.national.com



National Semiconductor Americas Technical Support Center
 Email: support@nsc.com
 Tel: 1-800-272-9959

National Semiconductor Europe Technical Support Center
 Email: europe.support@nsc.com
 German Tel: +49 (0) 180 5010 771
 English Tel: +44 (0) 870 850 4288

National Semiconductor Asia Pacific Technical Support Center
 Email: ap.support@nsc.com

National Semiconductor Japan Technical Support Center
 Email: jpn.feedback@nsc.com