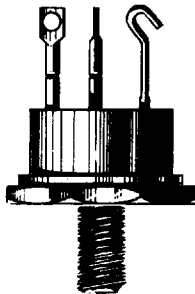


POWER TRANSISTORS



TO-63

TYPE NO.	PT @ 25°C Watts	MAXIMUM RATINGS				h _{FE}		Sat Voltages @				Test Conditions		I _{EBO} ma
		BV _{CB0}	BV _{CEO}	BV _{EBO}	I _C	MIN	MAX	I _C	V _{CE}	V _{CE}	V _{BE}	I _C	I _B	
		V	V	V	A									
2N2757	200	50	50	15	30	10		10	4	1.5	2.5	10	2	25
2N2758	200	100	100	15	30	10		10	4	1.5	2.5	10	2	25
2N2759	200	150	150	15	30	10		10	4	1.5	2.5	10	2	25
2N2760	200	200	200	15	30	10		10	4	1.5	2.5	10	2	25
2N2761	200	250	250	15	30	10		10	4	1.5	2.5	10	2	25
2N2763	200	50	50	15	30	10		15	4	1.5	2.5	15	3	25
2N2764	200	100	100	15	30	10		15	4	1.5	2.5	15	3	25
2N2765	200	150	150	15	30	10		15	4	1.5	2.5	15	3	25
2N2766	200	200	200	15	30	10		15	4	1.5	2.5	15	3	25
2N2769	200	50	50	15	30	10		20	4	1.5	2.5	20	4	25
2N2770	200	100	100	15	30	10		20	4	1.5	2.5	20	4	25
2N2771	200	150	150	15	30	10		20	4	1.5	2.5	20	4	25
2N2772	200	200	200	15	30	10		20	4	1.5	2.5	20	4	25
2N2775	200	50	50	15	30	10		25	4	1.5	2.5	25	5	25
2N2776	200	100	100	15	30	10		25	4	1.5	2.5	25	5	25
2N2777	200	150	150	15	30	10		25	4	1.5	2.5	25	5	25
2N2778	200	200	200	15	30	10		25	4	1.5	2.5	25	5	25
2N2815	200	80	80	10	20	10	.50	10	3	1.5	2.5	10	1.5	.250
2N2816	200	100	100	10	20	10	.50	10	3	1.5	2.5	10	1.5	.250
2N2817	200	150	150	10	20	10	.50	10	3	1.5	2.5	10	1.5	.250
2N2818	200	200	200	10	20	10	.50	10	3	1.5	2.5	10	1.5	.250
2N2819	200	80	80	10	25	10	.50	15	3	1.5	2.5	15	2.2	.250
2N2820	200	100	100	10	25	10	.50	15	3	1.5	2.5	15	2.2	.250
2N2821	200	150	150	10	25	10	.50	15	3	1.5	2.5	15	2.2	.250
2N2822	200	200	200	10	25	10	.50	15	3	1.5	2.5	15	2.2	.250
2N2823	200	80	80	10	30	10	40	20	3	1.1	2.1	20	3	.250
2N2824	200	100	100	10	30	10	40	20	3	1.1	2.1	20	3	.250
2N2825	200	150	150	10	30	10	40	20	3	1.1	2.1	20	3	.250
2N3260	200	200	200	10	30	10	40	20	3	1.5	2.5	20	3	.250

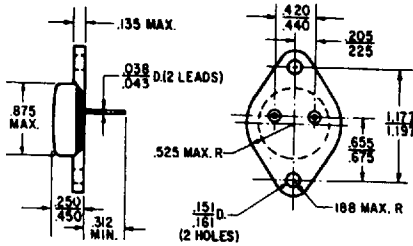


Solid Power Corporation

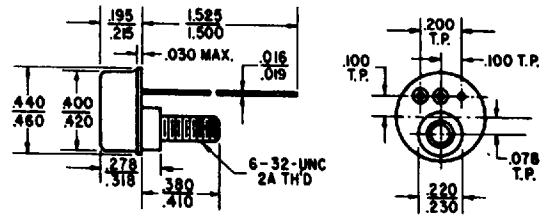
■ 0043592 0000426 9T8 ■

CASE OUTLINES

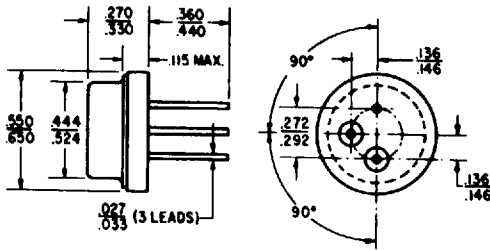
TO-3



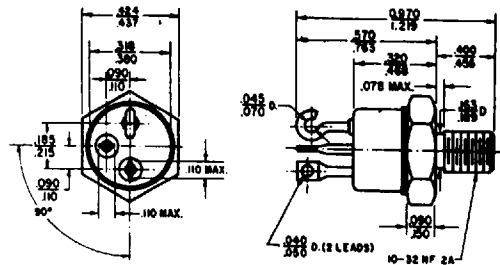
TO-57



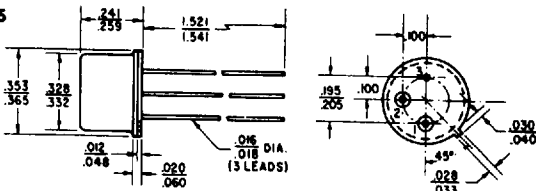
TO-8



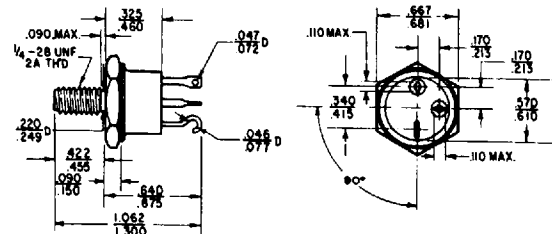
TO-59



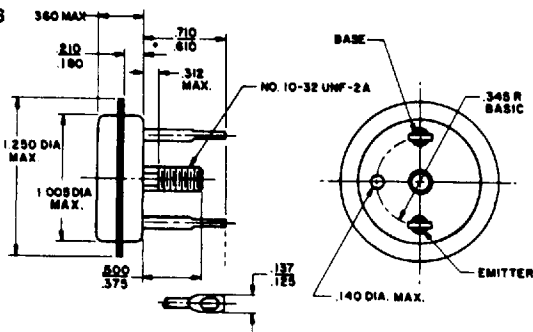
TO-5



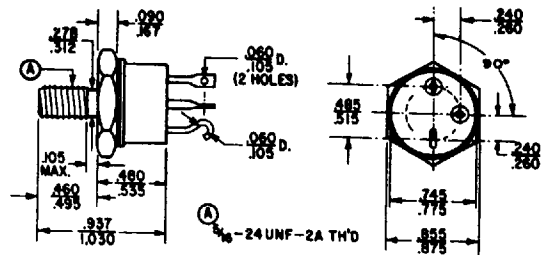
TO-81



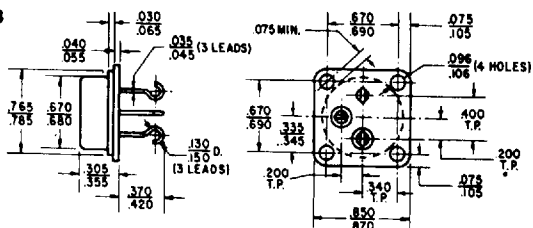
TO-36



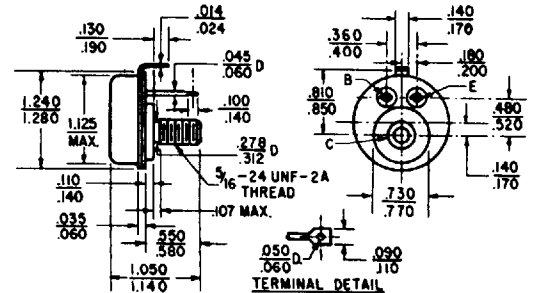
TO-63



TO-53



TO-82



TO-114

