

LM2722 High Speed Synchronous/Asynchronous MOSFET Driver

Check for Samples: [LM2722](#)

FEATURES

- Synchronous or Asynchronous Operation
- Adaptive Shoot-Through Protection
- Input Under-Voltage-Lock-Out
- Typical 20ns Internal Delay
- Plastic 8-pin SOIC package

APPLICATIONS

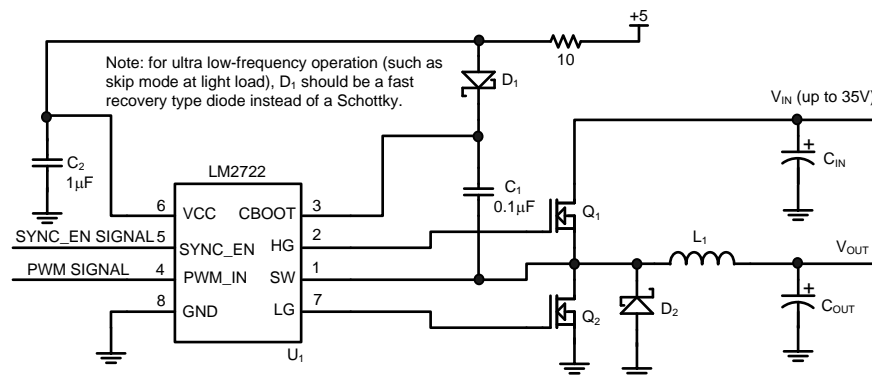
- Driver for LM2723 Intel Mobile Northwood CPU Core Power Supply.
- High Current DC/DC Power Supplies
- High Input Voltage Switching Regulators
- Fast Transient Microprocessors

DESCRIPTION

The LM2722, part of the LM2726 family, is designed to be used with multi-phase controllers. This part differs from the LM2726 by changing the functionality of the SYNC_EN pin from a whole chip enable to a low side MOSFET enable. As a result, the SYNC_EN pin now provides control between Synchronous and Asynchronous operations. Having this control can be advantageous in portable systems since Asynchronous operations can be more efficient at very light loads.

The LM2722 drives both top and bottom MOSFETs in a push-pull structure simultaneously. It takes a logic level PWM input and splits it into two complimentary signals with a typical 20ns dead time in between. The built-in cross-conduction protection circuitry prevents the top and bottom FETs from turning on simultaneously. The cross-conduction protection circuitry detects both the driver outputs and will not turn on a driver until the other driver output is low. With a bias voltage of 5V, the peak sourcing and sinking current for each driver of the LM2722 is typically 3A. In an SOIC-8 package, each driver is able to handle 50mA average current. Input UVLO (Under-Voltage-Lock-Out) forces both driver outputs low to ensure proper power-up and power-down operation. The gate drive bias voltage needed by the high side MOSFET is obtained through an external bootstrap. Minimum pulse width is as low as 55ns.

Typical Application



NOTE

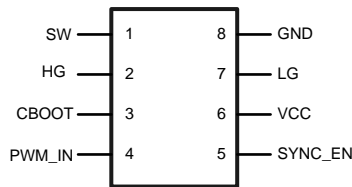
TI is an Intel Mobile Voltage Positioning (IMVP) licensee.



Please be aware that an important notice concerning availability, standard warranty, and use in critical applications of Texas Instruments semiconductor products and disclaimers thereto appears at the end of this data sheet.

All trademarks are the property of their respective owners.

Connection Diagram



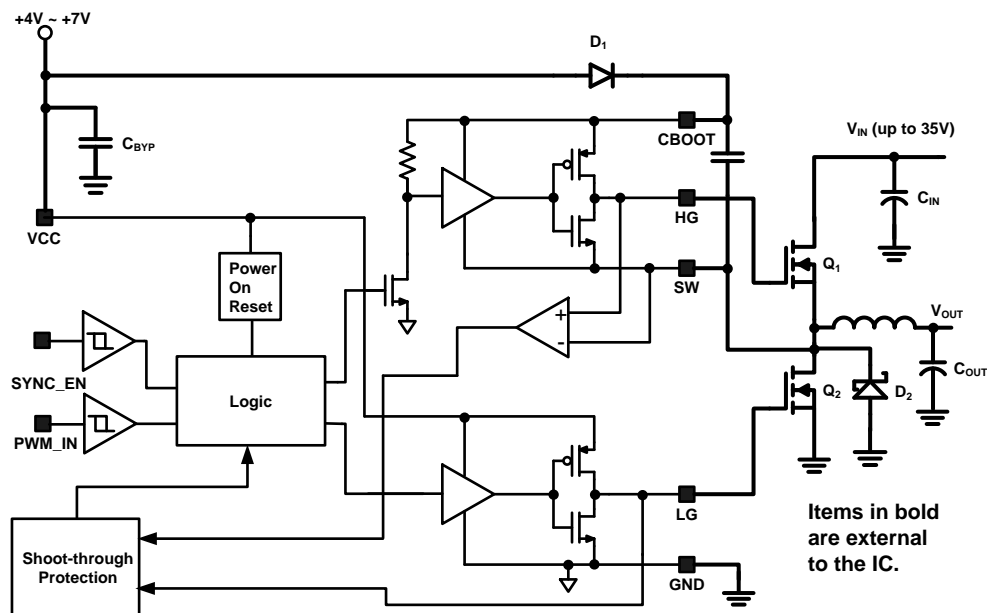
**Figure 1. SOIC (D)
(Top View)**

Pin Functions

Pin Descriptions

Pin	Name	Function
1	SW	Top driver return. Should be connected to the common node of top and bottom FETs
2	HG	Top gate drive output
3	CBOOT	Bootstrap. Accepts a bootstrap voltage for powering the high-side driver
4	PWM_IN	Accepts a 5V-logic control signal
5	SYNC_EN	Low gate Enable
6	VCC	Connect to +5V supply
7	LG	Bottom gate drive output
8	GND	Ground

Block Diagram



These devices have limited built-in ESD protection. The leads should be shorted together or the device placed in conductive foam during storage or handling to prevent electrostatic damage to the MOS gates.

Absolute Maximum Ratings ⁽¹⁾

VCC	7.5V
CBOOT	42V
CBOOT to SW	8V
SW to PGND	36V
Junction Temperature	+150°C
Power Dissipation (2)	720mW
Storage Temperature	-65° to 150°C
ESD Susceptibility Human Body Model ⁽³⁾	1kV
Soldering Time, Temperature	10sec., 300°C

- (1) **Absolute Maximum Ratings** are limits beyond which damage to the device may occur. **Operating ratings** are conditions under which the device operates correctly. Operating Ratings do not imply ensured performance limits.
- (2) Maximum allowable power dissipation is a function of the maximum junction temperature, T_{JMAX} , the junction-to-ambient thermal resistance, θ_{JA} , and the ambient temperature, T_A . The maximum allowable power dissipation at any ambient temperature is calculated using: $P_{MAX} = (T_{JMAX} - T_A) / \theta_{JA}$. The junction-to-ambient thermal resistance, θ_{JA} , for the LM2722, it is 172°C/W. For a T_{JMAX} of 150°C and T_A of 25°C, the maximum allowable power dissipation is 0.7W.
- (3) ESD machine model susceptibility is 100V.

Operating Ratings ⁽¹⁾

VCC	4V to 7V
Junction Temperature Range	-40° to 125°C

- (1) **Absolute Maximum Ratings** are limits beyond which damage to the device may occur. **Operating ratings** are conditions under which the device operates correctly. Operating Ratings do not imply ensured performance limits.

Electrical Characteristics

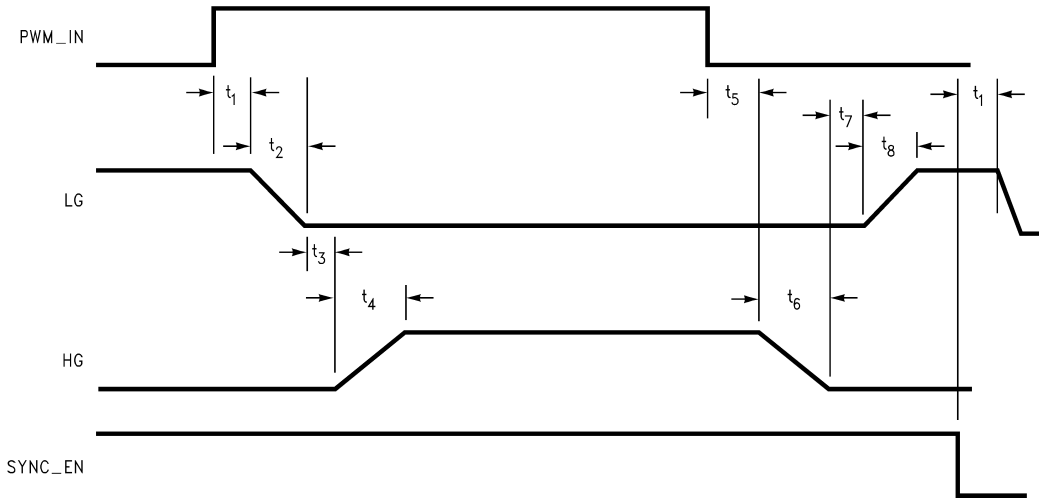
VCC = CBOOT = 5V, SW = GND = 0V, unless otherwise specified. Typical and limits appearing in plain type apply for $T_A = T_J = +25^\circ\text{C}$. Limits appearing in **boldface** type apply over the entire operating temperature range.

Symbol	Parameter	Condition	Min	Typ	Max	Units
POWER SUPPLY						
I_{q_op}	Operating Quiescent Current	PWM_IN = 0V		190	300	μA
TOP DRIVER						
	Peak Pull-Up Current	Test Circuit 1, $V_{bias} = 5\text{V}$, $R = 0.1\Omega$		3.0		A
	Pull-Up Rds_on	$I_{CBOOT} = I_{HG} = 0.7\text{A}$		1.0		Ω
	Peak Pull-down Current	Test Circuit 2, $V_{bias} = 5\text{V}$, $R = 0.1\Omega$		-3.2		A
	Pull-down Rds_on	$I_{SW} = I_{HG} = 0.7\text{A}$		0.5		Ω
t_4	Rise Time	Timing Diagram, $C_{LOAD} = 3.3\text{nF}$		17		ns
t_6	Fall Time			12		ns
t_3	Pull-Up Dead Time	Timing Diagram		23		ns
t_5	Pull-Down Delay	Timing Diagram, from PWM_IN Falling Edge		27		ns
BOTTOM DRIVER						
	Peak Pull-Up Current	Test Circuit 3, $V_{bias} = 5\text{V}$, $R = 0.1\Omega$		3.2		A
	Pull-up Rds_on	$I_{VCC} = I_{LG} = 0.7\text{A}$		1.0		Ω
	Peak Pull-down Current	Test Circuit 4, $V_{bias} = 5\text{V}$, $R = 0.1\Omega$		3.2		A
	Pull-down Rds_on	$I_{GND} = I_{LG} = 0.7\text{A}$		0.5		Ω
t_8	Rise Time	Timing Diagram, $C_{LOAD} = 3.3\text{nF}$		17		ns
t_2	Fall Time			14		ns
t_7	Pull-up Dead Time	Timing Diagram		28		ns
t_1	Pull-down Delay	Timing Diagram, from PWM_IN Rising Edge		13		ns
LOGIC						
V_{uvlo_up}	Power On Threshold	VCC rises from 0V toward 5V	4	3.7		V
V_{uvlo_dn}	Under-Voltage-Lock-Out Threshold			3.0	2.5	V
V_{uvlo_hys}	Under-Voltage-Lock-Out Hysteresis			0.7		V
V_{IH_EN}	SYNC_EN Pin High Input		2.4			V
V_{IL_EN}	SYNC_EN Pin Low Input				0.8	V
I_{leak_EN}	SYNC_EN Pin Leakage Current	EN = 5V	-2		2	μA
		EN = 0V	-2		2	
t_{on_min}	Minimum Positive Input Pulse Width (1)			55		ns
t_{off_min}	Minimum Negative Input Pulse Width (2)			55		
V_{IH_PWM}	PWM_IN High Level Input Voltage	When PWM_IN pin goes high from 0V	2.4			V
V_{IL_PWM}	PWM_IN Low Level Input Voltage	When PWM_IN pin goes low from 5V			0.8	

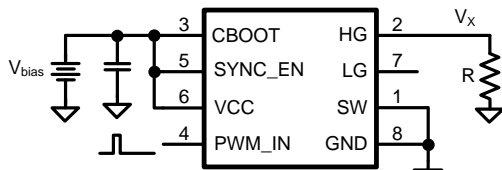
- (1) If after a rising edge, a falling edge occurs sooner than the specified value, the IC may intermittently fail to turn on the bottom gate when the top gate is off. As the falling edge occurs sooner and sooner, the driver may start to ignore the pulse and produce no output.
- (2) If after a falling edge, a rising edge occurs sooner than the specified value, the IC may intermittently fail to turn on the top gate when the bottom gate is off. As the rising edge occurs sooner and sooner, the driver may start to ignore the pulse and produce no output.

TEST CIRCUIT DIAGRAMS

Timing Diagram

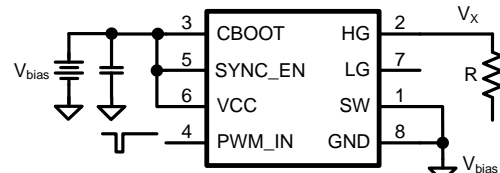


Test Circuits



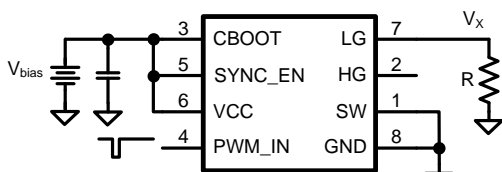
Width = 200ns, One Shot.

Figure 2. Test Circuit 1



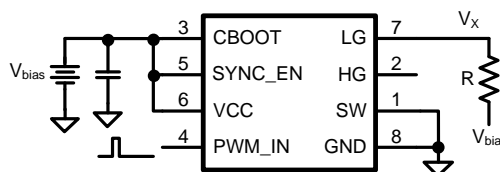
Width = 200ns, One Shot

Figure 3. Test Circuit 2



Width = 200ns, One Shot

Figure 4. Test Circuit 3



Width = 200ns, One Shot

Figure 5. Test Circuit 4

$$I_{\text{pull_up}} = \frac{V_x}{R} \tag{1}$$

$$I_{\text{pull_down}} = \frac{V_{\text{bias}} - V_x}{R} \tag{2}$$

$$R_{\text{ds_pull_up}} = \frac{V_{\text{bias}} - V_x}{V_x} \cdot R \tag{3}$$

$$R_{\text{ds_pull_down}} = \frac{V_x}{V_{\text{bias}} - V_x} \cdot R \tag{4}$$

Typical Waveforms

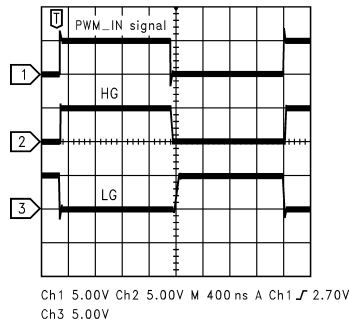


Figure 6. Switching Waveforms of Test Circuit

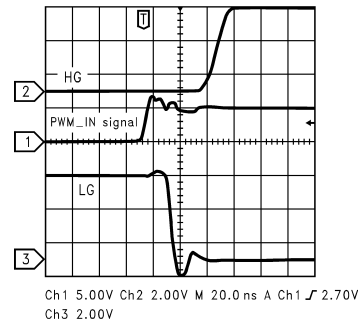


Figure 7. When Input Goes High

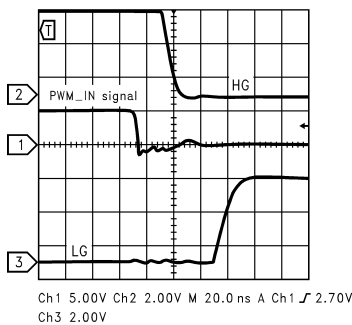


Figure 8. When Input Goes Low

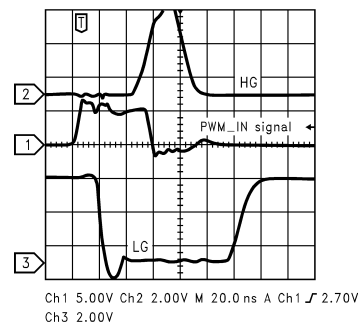


Figure 9. Minimum Positive Pulse

Application Information

MINIMUM PULSE WIDTH

In order for the shoot-through prevention circuitry in the LM2722 to work properly, the pulses into the PWM_IN pin must be longer than 55ns. The internal logic waits until the first FET is off plus 20ns before turning on the opposite FET. If, after a falling edge, a rising edge occurs sooner than the specified time, t_{off_min} , the IC may intermittently fail to turn on the top gate when the bottom gate is off. As the rising edge occurs sooner and sooner, the driver may start to ignore the pulse and produce no output. This condition results in the PWM_IN pin in a high state and neither FET turned on. To get out of this state, the PWM_IN pin must see a low signal for greater than 55ns, before the rising edge.

This will also assure that the gate drive bias voltage has been restored by forcing the top FET source and C_{boot} to ground first. Then the internal circuitry is reset and normal operation will resume.

Conversely, if, after a rising edge, a falling edge occurs sooner than the specified minimum pulse width, t_{on_min} , the IC may intermittently fail to turn on the bottom FET. As the falling edge occurs sooner and sooner, the driver will start to ignore the pulse and produce no output. This will result in the t_{off} inductor current taking a path through a diode provided for non-synchronous operation. The circuit will resume synchronous operation when the rising PWM pulses exceed 55ns in duration.

HIGH INPUT VOLTAGES OR HIGH OUTPUT CURRENTS

At input voltages above twice the output voltage and at higher power levels, the designer may find snubber networks and gate drive limiting useful in reducing EMI and preventing injurious transients. A small resistor, 1 Ω to 5 Ω , between the driver outputs and the MOSFET gates will slightly increase the rise time and fall time of the output stage and reduce switching noise. The trade-off is 1% to 2% in efficiency.

A series R-C snubber across in parallel with the bottom FET can also be used to reduce ringing. Values of 10nF and 10 Ω to 100 Ω are a good starting point.

REVISION HISTORY

Changes from Revision C (March 2013) to Revision D	Page
<hr/> <ul style="list-style-type: none">• Changed layout of National Data Sheet to TI format	<hr/> 6

PACKAGING INFORMATION

Orderable Device	Status (1)	Package Type	Package Drawing	Pins	Package Qty	Eco Plan (2)	Lead/Ball Finish (6)	MSL Peak Temp (3)	Op Temp (°C)	Device Marking (4/5)	Samples
LM2722MX/NOPB	OBSOLETE	SOIC	D	8		TBD	Call TI	Call TI		2722 M	

(1) The marketing status values are defined as follows:

ACTIVE: Product device recommended for new designs.

LIFEBUY: TI has announced that the device will be discontinued, and a lifetime-buy period is in effect.

NRND: Not recommended for new designs. Device is in production to support existing customers, but TI does not recommend using this part in a new design.

PREVIEW: Device has been announced but is not in production. Samples may or may not be available.

OBSOLETE: TI has discontinued the production of the device.

(2) **RoHS:** TI defines "RoHS" to mean semiconductor products that are compliant with the current EU RoHS requirements for all 10 RoHS substances, including the requirement that RoHS substance do not exceed 0.1% by weight in homogeneous materials. Where designed to be soldered at high temperatures, "RoHS" products are suitable for use in specified lead-free processes. TI may reference these types of products as "Pb-Free".

RoHS Exempt: TI defines "RoHS Exempt" to mean products that contain lead but are compliant with EU RoHS pursuant to a specific EU RoHS exemption.

Green: TI defines "Green" to mean the content of Chlorine (Cl) and Bromine (Br) based flame retardants meet JS709B low halogen requirements of <=1000ppm threshold. Antimony trioxide based flame retardants must also meet the <=1000ppm threshold requirement.

(3) MSL, Peak Temp. - The Moisture Sensitivity Level rating according to the JEDEC industry standard classifications, and peak solder temperature.

(4) There may be additional marking, which relates to the logo, the lot trace code information, or the environmental category on the device.

(5) Multiple Device Markings will be inside parentheses. Only one Device Marking contained in parentheses and separated by a "~" will appear on a device. If a line is indented then it is a continuation of the previous line and the two combined represent the entire Device Marking for that device.

(6) Lead/Ball Finish - Orderable Devices may have multiple material finish options. Finish options are separated by a vertical ruled line. Lead/Ball Finish values may wrap to two lines if the finish value exceeds the maximum column width.

Important Information and Disclaimer:The information provided on this page represents TI's knowledge and belief as of the date that it is provided. TI bases its knowledge and belief on information provided by third parties, and makes no representation or warranty as to the accuracy of such information. Efforts are underway to better integrate information from third parties. TI has taken and continues to take reasonable steps to provide representative and accurate information but may not have conducted destructive testing or chemical analysis on incoming materials and chemicals. TI and TI suppliers consider certain information to be proprietary, and thus CAS numbers and other limited information may not be available for release.

In no event shall TI's liability arising out of such information exceed the total purchase price of the TI part(s) at issue in this document sold by TI to Customer on an annual basis.

IMPORTANT NOTICE

Texas Instruments Incorporated (TI) reserves the right to make corrections, enhancements, improvements and other changes to its semiconductor products and services per JESD46, latest issue, and to discontinue any product or service per JESD48, latest issue. Buyers should obtain the latest relevant information before placing orders and should verify that such information is current and complete.

TI's published terms of sale for semiconductor products (<http://www.ti.com/sc/docs/stdterms.htm>) apply to the sale of packaged integrated circuit products that TI has qualified and released to market. Additional terms may apply to the use or sale of other types of TI products and services.

Reproduction of significant portions of TI information in TI data sheets is permissible only if reproduction is without alteration and is accompanied by all associated warranties, conditions, limitations, and notices. TI is not responsible or liable for such reproduced documentation. Information of third parties may be subject to additional restrictions. Resale of TI products or services with statements different from or beyond the parameters stated by TI for that product or service voids all express and any implied warranties for the associated TI product or service and is an unfair and deceptive business practice. TI is not responsible or liable for any such statements.

Buyers and others who are developing systems that incorporate TI products (collectively, "Designers") understand and agree that Designers remain responsible for using their independent analysis, evaluation and judgment in designing their applications and that Designers have full and exclusive responsibility to assure the safety of Designers' applications and compliance of their applications (and of all TI products used in or for Designers' applications) with all applicable regulations, laws and other applicable requirements. Designer represents that, with respect to their applications, Designer has all the necessary expertise to create and implement safeguards that (1) anticipate dangerous consequences of failures, (2) monitor failures and their consequences, and (3) lessen the likelihood of failures that might cause harm and take appropriate actions. Designer agrees that prior to using or distributing any applications that include TI products, Designer will thoroughly test such applications and the functionality of such TI products as used in such applications.

TI's provision of technical, application or other design advice, quality characterization, reliability data or other services or information, including, but not limited to, reference designs and materials relating to evaluation modules, (collectively, "TI Resources") are intended to assist designers who are developing applications that incorporate TI products; by downloading, accessing or using TI Resources in any way, Designer (individually or, if Designer is acting on behalf of a company, Designer's company) agrees to use any particular TI Resource solely for this purpose and subject to the terms of this Notice.

TI's provision of TI Resources does not expand or otherwise alter TI's applicable published warranties or warranty disclaimers for TI products, and no additional obligations or liabilities arise from TI providing such TI Resources. TI reserves the right to make corrections, enhancements, improvements and other changes to its TI Resources. TI has not conducted any testing other than that specifically described in the published documentation for a particular TI Resource.

Designer is authorized to use, copy and modify any individual TI Resource only in connection with the development of applications that include the TI product(s) identified in such TI Resource. NO OTHER LICENSE, EXPRESS OR IMPLIED, BY ESTOPPEL OR OTHERWISE TO ANY OTHER TI INTELLECTUAL PROPERTY RIGHT, AND NO LICENSE TO ANY TECHNOLOGY OR INTELLECTUAL PROPERTY RIGHT OF TI OR ANY THIRD PARTY IS GRANTED HEREIN, including but not limited to any patent right, copyright, mask work right, or other intellectual property right relating to any combination, machine, or process in which TI products or services are used. Information regarding or referencing third-party products or services does not constitute a license to use such products or services, or a warranty or endorsement thereof. Use of TI Resources may require a license from a third party under the patents or other intellectual property of the third party, or a license from TI under the patents or other intellectual property of TI.

TI RESOURCES ARE PROVIDED "AS IS" AND WITH ALL FAULTS. TI DISCLAIMS ALL OTHER WARRANTIES OR REPRESENTATIONS, EXPRESS OR IMPLIED, REGARDING RESOURCES OR USE THEREOF, INCLUDING BUT NOT LIMITED TO ACCURACY OR COMPLETENESS, TITLE, ANY EPIDEMIC FAILURE WARRANTY AND ANY IMPLIED WARRANTIES OF MERCHANTABILITY, FITNESS FOR A PARTICULAR PURPOSE, AND NON-INFRINGEMENT OF ANY THIRD PARTY INTELLECTUAL PROPERTY RIGHTS. TI SHALL NOT BE LIABLE FOR AND SHALL NOT DEFEND OR INDEMNIFY DESIGNER AGAINST ANY CLAIM, INCLUDING BUT NOT LIMITED TO ANY INFRINGEMENT CLAIM THAT RELATES TO OR IS BASED ON ANY COMBINATION OF PRODUCTS EVEN IF DESCRIBED IN TI RESOURCES OR OTHERWISE. IN NO EVENT SHALL TI BE LIABLE FOR ANY ACTUAL, DIRECT, SPECIAL, COLLATERAL, INDIRECT, PUNITIVE, INCIDENTAL, CONSEQUENTIAL OR EXEMPLARY DAMAGES IN CONNECTION WITH OR ARISING OUT OF TI RESOURCES OR USE THEREOF, AND REGARDLESS OF WHETHER TI HAS BEEN ADVISED OF THE POSSIBILITY OF SUCH DAMAGES.

Unless TI has explicitly designated an individual product as meeting the requirements of a particular industry standard (e.g., ISO/TS 16949 and ISO 26262), TI is not responsible for any failure to meet such industry standard requirements.

Where TI specifically promotes products as facilitating functional safety or as compliant with industry functional safety standards, such products are intended to help enable customers to design and create their own applications that meet applicable functional safety standards and requirements. Using products in an application does not by itself establish any safety features in the application. Designers must ensure compliance with safety-related requirements and standards applicable to their applications. Designer may not use any TI products in life-critical medical equipment unless authorized officers of the parties have executed a special contract specifically governing such use. Life-critical medical equipment is medical equipment where failure of such equipment would cause serious bodily injury or death (e.g., life support, pacemakers, defibrillators, heart pumps, neurostimulators, and implantables). Such equipment includes, without limitation, all medical devices identified by the U.S. Food and Drug Administration as Class III devices and equivalent classifications outside the U.S.

TI may expressly designate certain products as completing a particular qualification (e.g., Q100, Military Grade, or Enhanced Product). Designers agree that it has the necessary expertise to select the product with the appropriate qualification designation for their applications and that proper product selection is at Designers' own risk. Designers are solely responsible for compliance with all legal and regulatory requirements in connection with such selection.

Designer will fully indemnify TI and its representatives against any damages, costs, losses, and/or liabilities arising out of Designer's non-compliance with the terms and provisions of this Notice.