

December 1996

**Fast CMOS 3.3V 20-Bit Buffer**

### Features

- **Advanced 0.6 micron CMOS Technology**
- **Compatible with LCX™ Family**
- **Supports 5V Tolerant Mixed Signal Mode Operation**
  - Input Can Be 3V or 5V
  - Output Can Be 3V or Connected to 5V Bus
- **Advanced Low Power CMOS Operation**
- **Excellent Output Drive Capability:**
  - **Balanced Drives (24mA Sink and Source)**
- **Pin Compatible with Industry Standard Double-Density Pinouts**
- **Low Ground Bounce Outputs**
- **Hysteresis on All Inputs**
- **Multiple Center Pin and Distributed V<sub>CC</sub>/GND Pins Minimizing Switching Noise**

### Ordering Information

PART NUMBER	TEMP. RANGE (°C)	PACKAGE	PKG. NO.
CD74LPT16827AMT	-40 to 85	56 Ld TSSOP	M56.240-P
CD74LPT16827ASM	-40 to 85	56 Ld SSOP	M56.300-P
CD74LPT16827BMT	-40 to 85	56 Ld TSSOP	M56.240-P
CD74LPT16827BSM	-40 to 85	56 Ld SSOP	M56.300-P

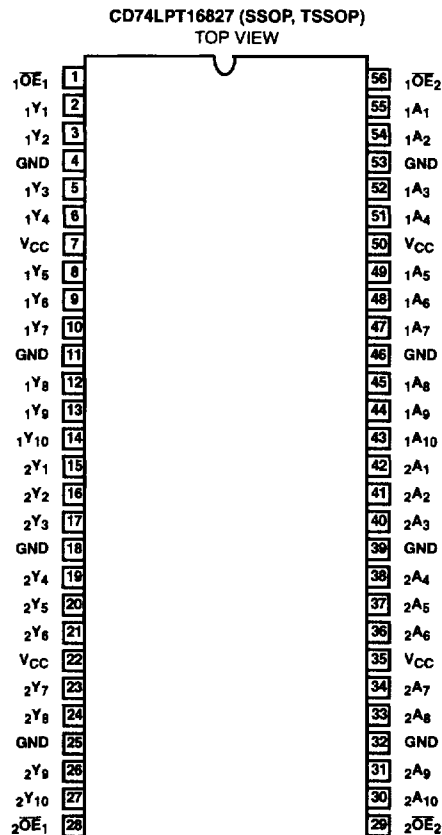
NOTE: When ordering, use the entire part number. Add the suffix 96 to obtain the variant in the tape and reel.

### Description

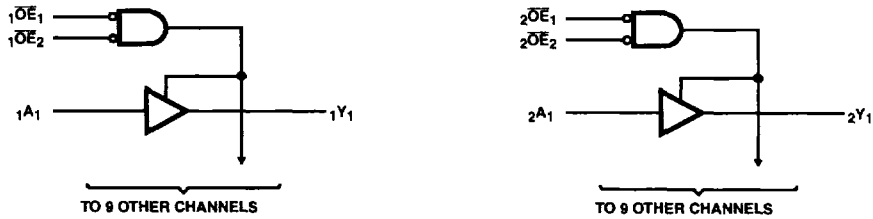
The CD74LPT16827 is a 20-bit wide bus driver designed to provide buffering and high-performance bus interfacing for wide data/address paths or busses with parity. Two pair of nanded output enable controls allow the device to be operated as two 10-bit buffers or as one 20-bit buffer. Signal pins are arranged in a flow-through organization for ease of layout and hysteresis is designed into all inputs to improve noise margin.

The CD74LPT16827 can be driven from either 3.3V or 5.0V devices allowing this device to be used as a translator in a mixed 3.3/5.0V system.

### Pinout


**3**
**3.3V LPT**

**Functional Block Diagram**



TRUTH TABLE (NOTE 1)

INPUTS			OUTPUT
$\overline{xOE}_1$	$\overline{xOE}_2$	$xA_x$	$xY_x$
L	L	L	L
L	L	H	H
H	X	X	Z
X	H	X	Z

NOTE:

- 1. H = High Voltage Level
- L = Low Voltage Level
- X = Don't Care
- Z = High Impedance

**Pin Descriptions**

PIN NAME	DESCRIPTION
$\overline{xOE}_x$	Output Enable Inputs (Active LOW)
$xA_x$	Data Inputs
$xY_x$	Three-State Outputs
GND	Ground
VCC	Power

# CD74LPT16827

## Absolute Maximum Ratings

DC Input Voltage ..... -0.5V to 7.0V  
 DC Output Current ..... 120mA

## Operating Conditions

Operating Temperature Range ..... -40°C to 85°C  
 Supply Voltage to Ground Potential  
 Inputs and V<sub>CC</sub> Only ..... -0.5V to 7.0V  
 Supply Voltage to Ground Potential  
 Outputs and D/O Only ..... -0.5V to 7.0V

## Thermal Information

Thermal Resistance (Typical, Note 2)  $\theta_{JA}$  (°C/W)  
 TSSOP Package ..... 85  
 SSOP Package ..... 70  
 Maximum Junction Temperature ..... 150°C  
 Maximum Storage Temperature Range ..... -65°C to 150°C  
 Maximum Lead Temperature (Soldering 10s) ..... 300°C  
 (Lead Tips Only)

CAUTION: Stresses above those listed in "Absolute Maximum Ratings" may cause permanent damage to the device. This is a stress only rating and operation of the device at these or any other conditions above those indicated in the operational sections of this specification is not implied.

### NOTE:

2.  $\theta_{JA}$  is measured with the component mounted on an evaluation PC board in free air.

## Electrical Specifications

PARAMETER	SYMBOL	(NOTE 3) TEST CONDITIONS		MIN	(NOTE 4) TYP	MAX	UNITS
<b>DC ELECTRICAL SPECIFICATIONS</b> Over the Operating Range, $T_A = -40^\circ\text{C}$ to $85^\circ\text{C}$ , $V_{CC} = 2.7\text{V}$ to $3.6\text{V}$							
Input HIGH Voltage (Input Pins)	V <sub>IH</sub>	Guaranteed Logic HIGH Level		2.2	-	5.5	V
Input HIGH Voltage (I/O Pins)	V <sub>IH</sub>	Guaranteed Logic HIGH Level		2.0	-	5.5	V
Input LOW Voltage (Input and I/O Pins)	V <sub>IL</sub>	Guaranteed Logic LOW Level		-0.5	-	0.8	V
Input HIGH Current (Input Pins)	I <sub>IH</sub>	V <sub>CC</sub> = Max	V <sub>IN</sub> = 5.5V	-	-	±1	µA
Input HIGH Current (I/O Pins)	I <sub>IH</sub>	V <sub>CC</sub> = Max	V <sub>IN</sub> = V <sub>CC</sub>	-	-	±1	µA
Input LOW Current (Input Pins)	I <sub>IL</sub>	V <sub>CC</sub> = Max	V <sub>IN</sub> = GND	-	-	±1	µA
Input LOW Current (I/O Pins)	I <sub>IL</sub>	V <sub>CC</sub> = Max	V <sub>IN</sub> = GND	-	-	±1	µA
High Impedance Output Current (Three-State Output Pins)	I <sub>OZH</sub>	V <sub>CC</sub> = Max	V <sub>OUT</sub> = 5.5V	-	-	±1	µA
	I <sub>OZL</sub>	V <sub>CC</sub> = Max	V <sub>OUT</sub> = GND	-	-	±1	µA
Clamp Diode Voltage	V <sub>IK</sub>	V <sub>CC</sub> = Min, I <sub>IN</sub> = -18mA		-	-0.7	-1.2	V
Output HIGH Current	I <sub>ODH</sub>	V <sub>CC</sub> = 3.3V, V <sub>IN</sub> = V <sub>IH</sub> or V <sub>IL</sub> , V <sub>O</sub> = 1.5V (Note 5)		-36	-60	-110	mA
Output LOW Current	I <sub>ODL</sub>	V <sub>CC</sub> = 3.3V, V <sub>IN</sub> = V <sub>IH</sub> or V <sub>IL</sub> , V <sub>O</sub> = 1.5V (Note 5)		50	90	200	mA
Output HIGH Voltage	V <sub>OH</sub>	V <sub>CC</sub> = Min, V <sub>IN</sub> = V <sub>IH</sub> or V <sub>IL</sub>	I <sub>OH</sub> = -0.1mA	V <sub>CC</sub> - 0.2	-	-	V
			I <sub>OH</sub> = -3mA	2.4	3.0	-	V
		V <sub>CC</sub> = 3.0V, V <sub>IN</sub> = V <sub>IH</sub> or V <sub>IL</sub>	I <sub>OH</sub> = -8mA	2.4	3.0	-	V
			I <sub>OH</sub> = -24mA	2.0	-	-	V
Output LOW Voltage	V <sub>OL</sub>	V <sub>CC</sub> = Min, V <sub>IN</sub> = V <sub>IH</sub> or V <sub>IL</sub>	I <sub>OL</sub> = 0.1mA	-	-	0.2	V
			I <sub>OL</sub> = 16mA	-	0.2	0.4	V
			I <sub>OL</sub> = 24mA	-	0.3	0.5	V

3

3.3V LPT

## Electrical Specifications (Continued)

PARAMETER	SYMBOL	(NOTE 3) TEST CONDITIONS	MIN	(NOTE 4) TYP	MAX	UNITS		
Short Circuit Current (Note 6)	$I_{OS}$	$V_{CC} = \text{Max (Note 5)}, V_{OUT} = \text{GND}$	-60	-85	-240	mA		
Power Down Disable	$I_{OFF}$	$V_{CC} = 0V, V_{IN} \text{ or } V_{OUT} \leq 4.5V$	-	-	$\pm 100$	$\mu A$		
Input Hysteresis	$V_H$		-	150	-	mV		
<b>CAPACITANCE</b> $T_A = 25^\circ C, f = 1\text{MHz}$								
Input Capacitance (Note 8)	$C_{IN}$	$V_{IN} = 0V$	-	4.5	6	pF		
Output Capacitance (Note 8)	$C_{OUT}$	$V_{OUT} = 0V$	-	5.5	8	pF		
<b>POWER SUPPLY SPECIFICATIONS</b>								
Quiescent Power Supply Current	$I_{CC}$	$V_{CC} = \text{Max}$		$V_{IN} = \text{GND}$ or $V_{CC}$	-	0.1	10	$\mu A$
Quiescent Power Supply Current TTL Inputs HIGH	$\Delta I_{CC}$	$V_{CC} = \text{Max}$		$V_{IN} = V_{CC} - 0.6V$ (Note 9)	-	2.0	30	$\mu A$
Dynamic Power Supply Current (Note 10)	$I_{CCD}$	$V_{CC} = \text{Max}, \text{Outputs Open}$ $\overline{XOE} = \text{GND}$ One Bit Toggling 50% Duty Cycle		$V_{IN} = V_{CC}$ $V_{IN} = \text{GND}$	-	50	75	$\mu A/\text{MHz}$
Total Power Supply Current (Note 12)	$I_C$	$V_{CC} = \text{Max}, \text{Outputs Open}$ $f_t = 10\text{MHz}, 50\% \text{ Duty Cycle}$ $\overline{XOE} = \text{GND}$ One Bit Toggling		$V_{IN} = V_{CC} - 0.6V$ $V_{IN} = \text{GND}$	-	0.6	2.3	mA
		$V_{CC} = \text{Max}, \text{Outputs Open}$ $f_t = 2.5\text{MHz}, 50\% \text{ Duty Cycle}$ $\overline{XOE} = \text{GND}$ 16 Bits Toggling		$V_{IN} = V_{CC} - 0.6V$ $V_{IN} = \text{GND}$	-	2.1	4.7 (Note 11)	mA

Switching Specifications Over Operating Range (Note 13)

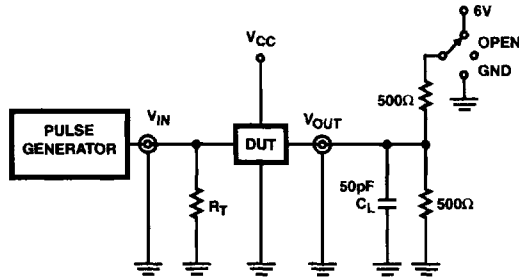
PARAMETER	SYMBOL	(NOTE 14) TEST CONDITIONS	CD74LPT16827A		CD74LPT16827B		UNITS
			(NOTE 15) MIN	MAX	(NOTE 15) MIN	MAX	
Propagation Delay A <sub>N</sub> to Y <sub>N</sub>	t <sub>PLH</sub> , t <sub>PHL</sub>	C <sub>L</sub> = 50pF R <sub>L</sub> = 500Ω	1.5	6.5	1.5	5.0	ns
		C <sub>L</sub> = 300pF R <sub>L</sub> = 500Ω (Note 16)	1.5	15.0	1.5	13.0	ns
Output Enable Time OE <sub>N</sub> to Y <sub>N</sub>	t <sub>PZH</sub> , t <sub>PZL</sub>	C <sub>L</sub> = 50pF R <sub>L</sub> = 500Ω	1.5	9.5	1.5	8.0	ns
		C <sub>L</sub> = 300pF R <sub>L</sub> = 500Ω (Note 16)	1.5	23.0	1.5	15.0	ns
Output Disable Time (Note 16) OE <sub>N</sub> to Y <sub>N</sub>	t <sub>PHZ</sub> , t <sub>PLZ</sub>	C <sub>L</sub> = 5pF R <sub>L</sub> = 500Ω	1.5	8.5	1.5	6.0	ns
		C <sub>L</sub> = 50pF R <sub>L</sub> = 500Ω	1.5	10.0	1.5	7.0	ns
Output Skew (Note 17)	t <sub>SK(O)</sub>		-	0.5	-	0.5	ns

NOTES:

- For conditions shown as Max or Min, use appropriate value specified under Electrical Specifications for the applicable device type.
- Typical values are at V<sub>CC</sub> = 3.3V, 25°C ambient and maximum loading.
- Not more than one output should be shorted at one time. Duration of the test should not exceed one second.
- This parameter is guaranteed but not tested.
- V<sub>OH</sub> = V<sub>CC</sub> - 0.6V at rated current.
- This parameter is determined by device characterization but is not production tested.
- Per TTL driven input; all other inputs at V<sub>CC</sub> or GND.
- This parameter is not directly testable, but is derived for use in Total Power Supply Calculations.
- Values for these conditions are examples of the I<sub>CC</sub> formula. These limits are guaranteed but not tested.
- $I_C = I_{QUIESCENT} + I_{INPUTS} + I_{DYNAMIC}$   
 $I_C = I_{CC} + \Delta I_{CC} D_H N_T + I_{CCD} (f_{CP}/2 + f_1 N_1)$   
 I<sub>CC</sub> = Quiescent Current (I<sub>CCL</sub>, I<sub>CCCH</sub> and I<sub>CCZ</sub>)  
 ΔI<sub>CC</sub> = Power Supply Current for a TTL High Input  
 D<sub>H</sub> = Duty Cycle for TTL Inputs High  
 N<sub>T</sub> = Number of TTL Inputs at D<sub>H</sub>  
 I<sub>CCD</sub> = Dynamic Current Caused by an Input Transition Pair (HLH or LHL)  
 f<sub>CP</sub> = Clock Frequency for Register Devices (Zero for Non-Register Devices)  
 N<sub>CP</sub> = Number of Clock Inputs at f<sub>CP</sub>  
 f<sub>1</sub> = Input Frequency  
 N<sub>1</sub> = Number of Inputs at f<sub>1</sub>  
 All currents are in milliamps and all frequencies are in megahertz.
- Propagation Delays and Enable/Disable times are with V<sub>CC</sub> = 3.3V ±0.3V, normal range. For V<sub>CC</sub> = 2.7V, extended range, all Propagation Delays and Enable/Disable times should be degraded by 20%.
- See test circuit and wave forms.
- Minimum limits are guaranteed but not tested on Propagation Delays.
- This parameter is guaranteed but not production tested.
- Skew between any two outputs, of the same package, switching in the same direction. This parameter is guaranteed by design.

3  
3.3V LPT

**Test Circuits and Waveforms**



SWITCH POSITION	
TEST	SWITCH
$t_{PLZ}$ , $t_{PZL}$ , Open Drain	6V
$t_{PHZ}$ , $t_{PZH}$	GND
$t_{PLH}$ , $t_{PHL}$	Open

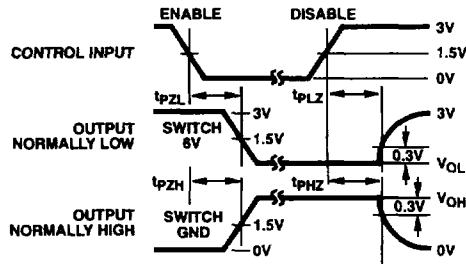
**DEFINITIONS:**

$C_L$  = Load capacitance, includes jig and probe capacitance.  
 $R_T$  = Termination resistance, should be equal to  $Z_{OUT}$  of the Pulse Generator.

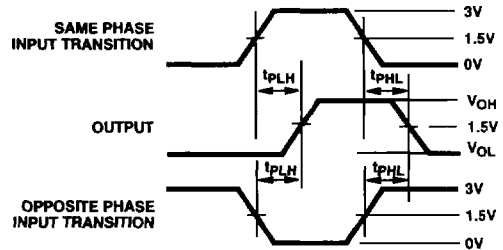
**NOTE:**

18. Pulse Generator for All Pulses: Rate  $\leq$  1.0MHz;  $Z_{OUT} \leq$  50 $\Omega$ ;  
 $t_r$ ,  $t_f \leq$  2.5ns.

**FIGURE 1. TEST CIRCUIT**



**FIGURE 2. ENABLE AND DISABLE TIMING**



**FIGURE 3. PROPAGATION DELAY**