

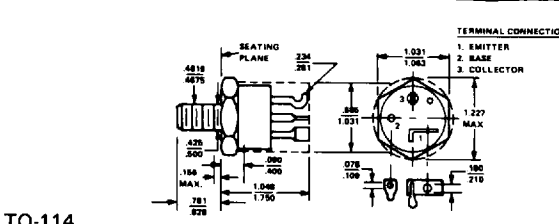
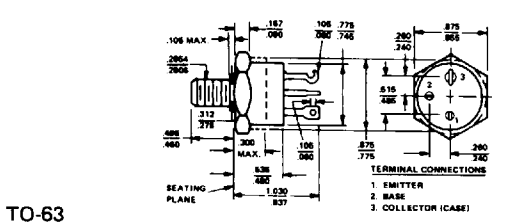
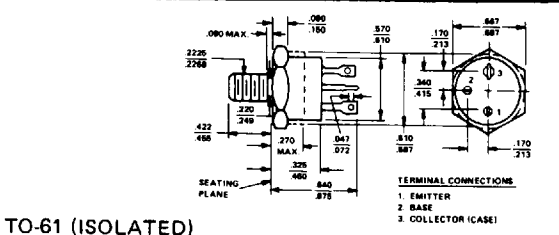
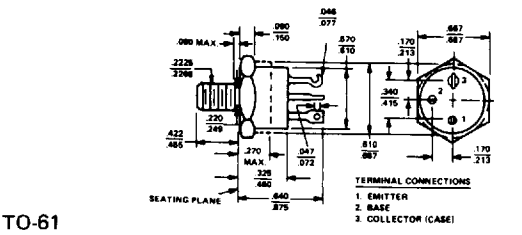
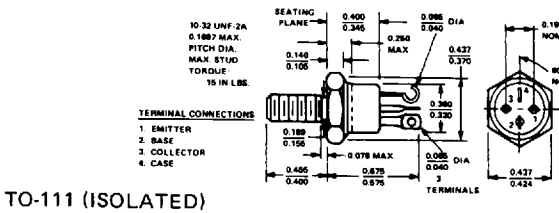
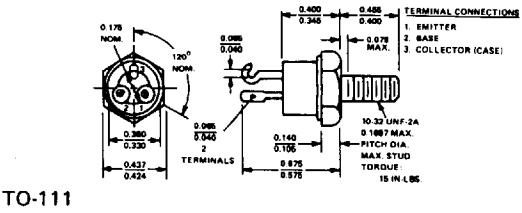
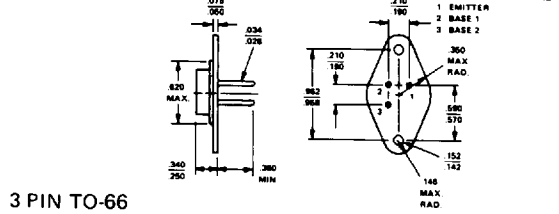
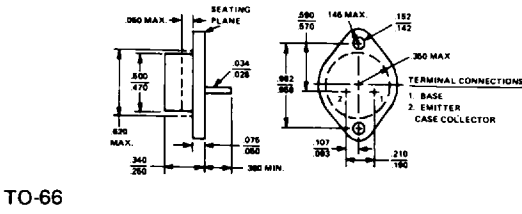
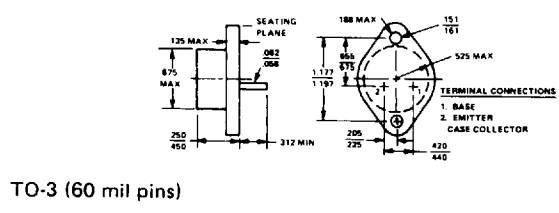
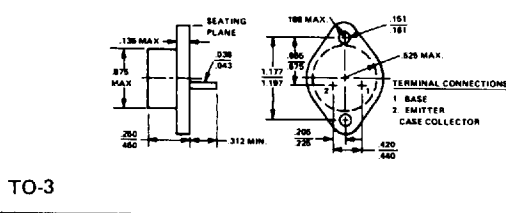
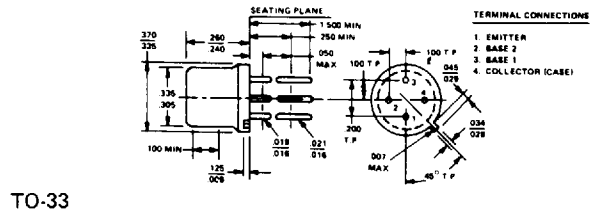
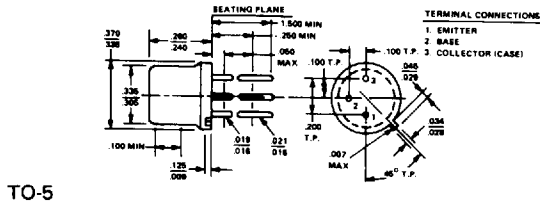
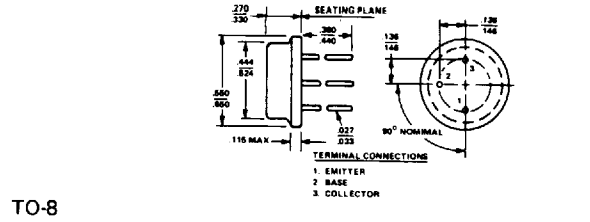
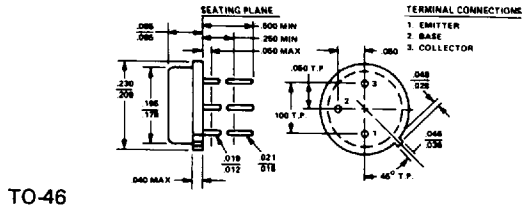
**COLLECTOR CURRENT = 15 AMPS NPN TYPES**

Device No	Case	VCBO Volts	VCEO (sus) Volts	VEBO Volts	hFE		VCE	IC	VCE (sat)	VBE (sat)	@ IC	@ IB	$\theta_{JC}$ °C/W	Ft MHz
					Min	Max								
2N3055	TO-3	100	60	7	20	70	4	4	1.1	1.8	4	.4	1.5	.8
JAN 2N3055	TO-3	100	70	7	20	60	4	4	.75	1.4	4	.4	1.5	.8
JTX 2N3055	TO-3	100	70	7	20	60	4	4	.75	1.4	4	.4	1.5	.8
2N3235	TO-3	65	55	7	20	70	4	4	1.1	1.8	4	.4	1.5	.8
2N3236	TO-3	90	90	7	17	60	4	5	1.1	1.8	5	.5	1.1	.8
2N3238	TO-3	80	80	8	9	25	12	10	3	4	10	1.33	1	.8
2N3239	TO-3	80	80	8	9	25	10	10	1	2	10	1.33	1.1	.8
2N3240	TO-3	160	160	8	9	25	10	10	1	2	10	1.33	1.1	.8
2N3667	TO-3	50	50	5	15	60	3	8	1.6	2.4	8	.8	1.5	1
2N5412	TO-61	80	60	7	10	160	1	2	1.5	1.7	15	3	1.5	60
2N5881	TO-3	60	60	6	20	100	4	6	1	1.8	7	.7	1.1	4
2N5882	TO-3	80	80	6	20	100	4	6	1	1.8	7	.7	1.1	4
2N6253	TO-3	55	45	5	20	70	4	3	1	1.7	3	.3	1.5	.8
2N6254	TO-3	100	80	7	20	70	2	5	.5	1.7	5	.5	1.17	.8
2N6470	TO-3	50	40	5	20	150	4	5	1.3	1.3	5	.5	1.4	10
2N6471	TO-3	70	60	5	20	150	4	5	1.3	1.3	5	.5	1.4	10
2N6472	TO-3	90	80	5	20	150	4	5	1.3	1.3	5	.5	1.4	10
2N6496	TO-3	150	110	7	12	100	2	8	1	2	8	.8	1.25	60

**COLLECTOR CURRENT = 20 AMPS NPN TYPES**

Device No	Case	VCBO Volts	VCEO (sus) Volts	VEBO Volts	hFE		VCE	IC	VCE (sat)	VBE (sat)	@ IC	@ IB	$\theta_{JC}$ °C/W	Ft MHz
					Min	Max								
2N3597	TO-63	60	40	8	40	120	2	10	.5	1.5	10	1	1	30
2N3598	TO-63	80	60	8	40	120	2	10	.5	1.5	10	1	1	30
2N3599	TO-63	100	80	8	40	120	2	10	.5	1.5	10	1	1	30
2N3772	TO-3	100	60	7	15	60	4	10	1.4	2.2	10	1	1.2	.8
JAN 2N3772	TO-3	100	60	7	15	60	4	10	1.2	2	10	1	1.2	.8
JTX 2N3772	TO-3	100	60	7	15	60	4	10	1.2	2	10	1	1.2	.8
2N3848	TO-63	300	200	10	40	200	4	15	1	1.4	15	2	.5	10
2N3849	TO-63	400	300	10	40	200	4	15	1	1.4	15	2	.5	10
2N4210	TO-63	80	60	10	20	100	6	10	1	1.6	10	1	1	20
2N4211	TO-63	100	80	10	20	100	6	10	1	1.6	10	1	1	20
2N5038	TO-3	140	90	7	20	100	5	12	1	1.8	12	1.2	1.25	60
2N5039	TO-3	110	75	7	20	100	5	10	1	1.8	10	1	1.25	60
2N5313	TO-61	80	80	6	30	90	5	10	1.5	1.5	10	1	2	30
2N5315	TO-61	100	100	6	30	90	5	10	1.5	1.5	10	1	2	30
2N5329	TO- 61/I	150	90	8	40	120	2	10	1.8	1.7	20	2	1.25	80
2N5539	TO-63	175	130	7	25	75	5	10	.8	1.5	15	1.5	1	30
2N5658	TO- 111	120	80	7	50	150	5	5	.5	1.3	5	.5	3.33	50
2N5659	TO- 111/I	120	80	7	50	150	5	5	.5	1.3	5	.5	3.33	50
2N5731	TO- 61/I	100	80	5	30	300	2	5	1.2	1.5	10	1	2	40
2N5732	TO-3	100	80	5	30	300	2	5	1.2	1.5	10	1	2	40
2N5957	TO-61	100	100	10	30	120	10	10	.4	1	5	.5	1	40
2N5959	TO- 61/I	100	100	10	30	120	10	10	.4	1	5	.5	1	40
2N6046	TO-63	70	60	7	20	100	4	20	2	2	20	1.33	.9	30
2N6047	TO-63	110	100	7	20	100	4	20	2	2	20	1.33	.9	30
2N6048	TO-63	150	140	7	20	100	4	20	2	2	20	1.33	.9	30
2N6257	TO-3	50	40	5	15	75	4	8	1.5	2.2	8	.8	1.17	1

# PHYSICAL DIMENSIONS - PACKAGES



ALL DIMENSIONS IN INCHES

0043592 0000403 3T0