

# TLE2161, TLE2161A, TLE2161B EXCALIBUR JFET-INPUT HIGH-OUTPUT-DRIVE $\mu$ POWER OPERATIONAL AMPLIFIERS

LSOS049D - NOVEMBER 1989 - REVISED MAY 1996

- **Excellent Output Drive Capability**  
 $V_O = \pm 2.5$  V Min at  $R_L = 100 \Omega$ ,  
 $V_{CC\pm} = \pm 5$  V  
 $V_O = \pm 12.5$  V Min at  $R_L = 600 \Omega$ ,  
 $V_{CC\pm} = \pm 15$  V
- **Low Supply Current . . . 280  $\mu$ A Typ**
- **Decompensated for High Slew Rate and Gain-Bandwidth Product**  
 $A_{VD} = 0.5$  Min  
**Slew Rate = 10 V/ $\mu$ s Typ**  
**Gain-Bandwidth Product = 6.5 MHz Typ**

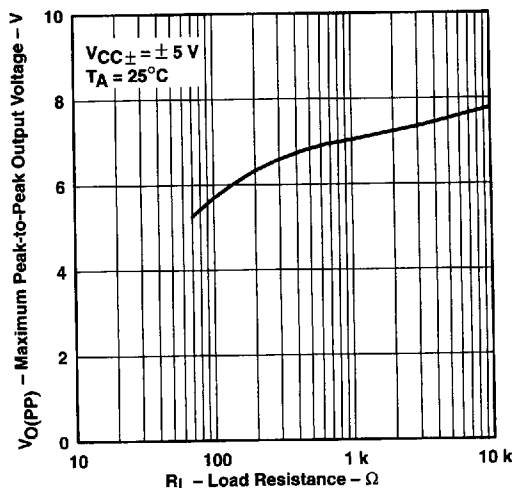
- **Wide Operating Supply Voltage Range**  
 $V_{CC\pm} = \pm 3.5$  V to  $\pm 18$  V
- **High Open-Loop Gain . . . 280 V/mV Typ**
- **Low Offset Voltage . . . 500  $\mu$ V Max**
- **Low Offset Voltage Drift With Time**  
0.04  $\mu$ V/Month Typ
- **Low Input Bias Current . . . 5 pA Typ**

## description

The TLE2161, TLE2161A, and TLE2161B are JFET-input, low-power, precision operational amplifiers manufactured using the Texas Instruments Excalibur process. Decompensated for stability with a minimum closed-loop gain of 5, these devices combine outstanding output drive capability with low power consumption, excellent dc precision, and high gain-bandwidth product.

In addition to maintaining the traditional JFET advantages of fast slew rates and low input bias and offset currents, the Excalibur process offers outstanding parametric stability over time and temperature. This results in a device that remains precise even with changes in temperature and over years of use.

**MAXIMUM PEAK-TO-PEAK OUTPUT VOLTAGE  
vs  
LOAD RESISTANCE**



## AVAILABLE OPTIONS

T <sub>A</sub>	V <sub>IOmax</sub> AT 25°C	PACKAGE			
		SMALL OUTLINE (D)	CHIP CARRIER (FK)	CERAMIC DIP (JG)	PLASTIC DIP (P)
0°C to 70°C	500 $\mu$ V 1.5 mV 3 mV	— TLE2161ACD TLE2161CD	— —	— —	TLE2161BCP TLE2161ACP TLE2161CP
-40°C to 85°C	500 $\mu$ V 1.5 mV 3 mV	— TLE2161AID TLE2161ID	— —	— —	TLE2161BIP TLE2161AIP TLE2161IP
-55°C to 125°C	500 $\mu$ V 1.5 mV 3 mV	— TLE2161AMD TLE2161MD	— TLE2161AMFK TLE2161MFK	TLE2161BMJG TLE2161AMJG TLE2161MJG	TLE2161BMP TLE2161AMP TLE2161MP

The D packages are available taped and reeled. Add R suffix to device type (e.g., TLE2161ACDR).

8961724 0107474 639

PRODUCTION DATA information is current as of publication date. Products conform to specifications per the terms of Texas Instruments standard warranty. Production processing does not necessarily include testing of all parameters.

**TEXAS  
INSTRUMENTS**

POST OFFICE BOX 655303 • DALLAS, TEXAS 75265

Copyright © 1996, Texas Instruments Incorporated

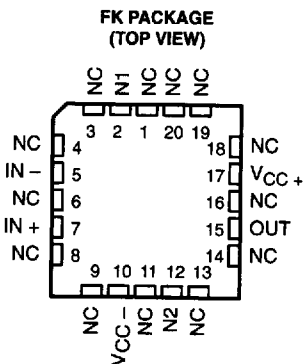
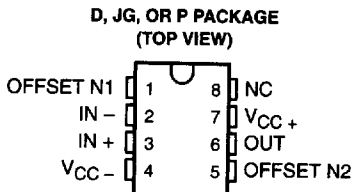
# TLE2161, TLE2161A, TLE2161B EXCALIBUR JFET-INPUT HIGH-OUTPUT-DRIVE μPOWER OPERATIONAL AMPLIFIERS

SLOS049D—NOVEMBER 1989—REVISED MAY 1996

## description (continued)

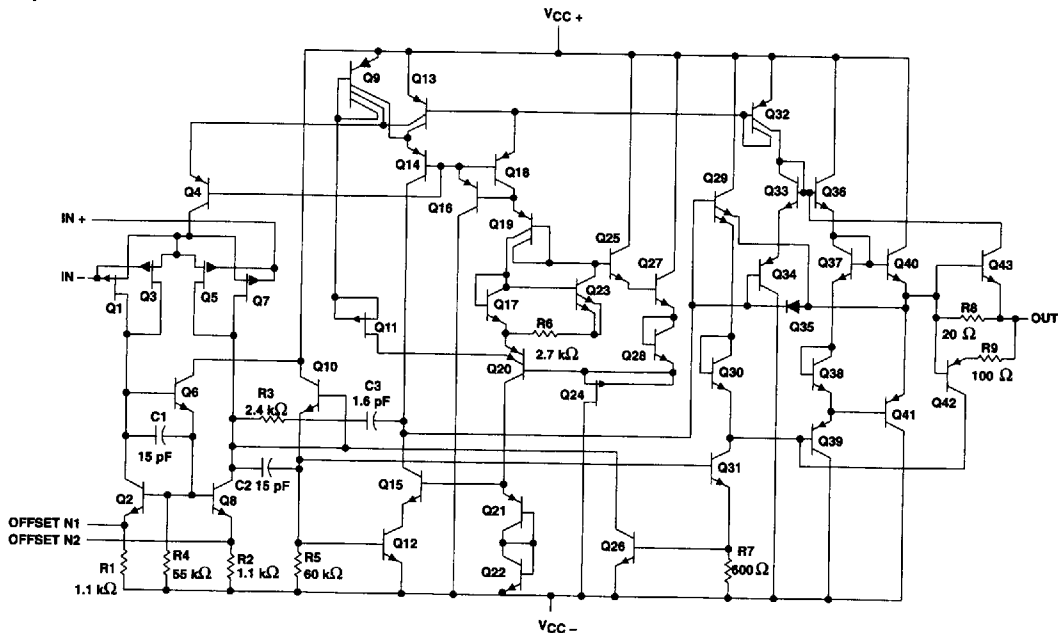
A variety of available options includes small-outline packages and chip-carrier versions for high-density system applications.

The C-suffix devices are characterized for operation from 0°C to 70°C. The I-suffix devices are characterized for operation from -40°C to 85°C. The M-suffix devices are characterized for operation over the full military temperature range of -55°C to 125°C.



NC - No internal connection

## equivalent schematic



All component values are nominal.

8961724 0107475 575

**TEXAS  
INSTRUMENTS**

POST OFFICE BOX 655303 • DALLAS, TEXAS 75265

**TLE2161, TLE2161A, TLE2161B**  
**EXCALIBUR JFET-INPUT HIGH-OUTPUT-DRIVE**  
**μPOWER OPERATIONAL AMPLIFIERS**

SLOS049D – NOVEMBER 1989 – REVISED MAY 1996

**absolute maximum ratings over operating free-air temperature range (unless otherwise noted)†**

Supply voltage, $V_{CC+}$ (see Note 1)	19 V
Supply voltage, $V_{CC-}$	-19 V
Differential input voltage, $V_{ID}$ (see Note 2)	±38 V
Input voltage range, $V_I$ (any input)	$V_{CC±}$
Input current, $I_I$ (each input)	±1 mA
Output current, $I_O$	±80 mA
Total current into $V_{CC+}$	80 mA
Total current out of $V_{CC-}$	80 mA
Duration of short-circuit current at (or below) 25°C (see Note 3)	unlimited
Continuous total power dissipation	See Dissipation Rating Table
Operating free-air temperature range, $T_A$ : C suffix	0°C to 70°C
I suffix	-40°C to 85°C
M suffix	-55°C to 125°C
Storage temperature range, $T_{stg}$	-65°C to 150°C
Case temperature for 60 seconds: FK package	260°C
Lead temperature 1,6 mm (1/16 inch) from case for 10 seconds: D or P package	260°C
Lead temperature 1,6 mm (1/16 inch) from case for 60seconds: JG package	300°C

† Stresses beyond those listed under "absolute maximum ratings" may cause permanent damage to the device. These are stress ratings only, and functional operation of the device at these or any other conditions beyond those indicated under "recommended operating conditions" is not implied. Exposure to absolute-maximum-rated conditions for extended periods may affect device reliability.

- NOTES: 1. All voltage values, except differential voltages, are with respect to the midpoint between  $V_{CC+}$  and  $V_{CC-}$ .  
 2. Differential voltages are at  $IN+$  with respect to  $IN-$ .  
 3. The output may be shorted to either supply. Temperature and/or supply voltages must be limited to ensure that the maximum dissipation rating is not exceeded.

**DISSIPATION RATING TABLE**

PACKAGE	$T_A \leq 25^\circ\text{C}$ POWER RATING	DERATING FACTOR ABOVE $T_A = 25^\circ\text{C}$	$T_A = 70^\circ\text{C}$ POWER RATING	$T_A = 85^\circ\text{C}$ POWER RATING	$T_A = 125^\circ\text{C}$ POWER RATING
D	725 mW	5.8 mW/°C	464 mW	377 mW	145 mW
FK	1375 mW	11.0 mW/°C	880 mW	715 mW	275 mW
JG	1050 mW	8.4 mW/°C	672 mW	546 mW	210 mW
P	1000 mW	8.0 mW/°C	640 mW	520 mW	200 mW

**recommended operating conditions**

		C SUFFIX		I SUFFIX		M SUFFIX		UNIT
		MIN	MAX	MIN	MAX	MIN	MAX	
Supply voltage, $V_{CC±}$		±3.5	±18	±3.5	±18	+3.5	±18	V
Common-mode input voltage, $V_{IC}$	$V_{CC±} \pm 5\text{ V}$	-1.6	4	-1.6	4	-1.6	4	V
	$V_{CC±} \pm 15\text{ V}$	-11	13	-11	13	-11	13	
Operating free-air temperature, $T_A$		0	70	-40	85	-55	125	°C

8961724 0107476 401



POST OFFICE BOX 655303 • DALLAS, TEXAS 75265

**TLE2161, TLE2161A, TLE2161B**  
**EXCALIBUR JFET-INPUT HIGH-OUTPUT-DRIVE**  
 **$\mu$ POWER OPERATIONAL AMPLIFIERS**

SLOS049D - NOVEMBER 1989 - REVISED MAY 1996

electrical characteristics at specified free-air temperature,  $V_{CC} \pm \pm 5\text{ V}$  (unless otherwise noted)

PARAMETER		TEST CONDITIONS	$T_A$ †	TLE2161C, TLE2161AC TLE2161BC			UNIT
				MIN	TYP	MAX	
$V_{IO}$	Input offset voltage	$V_{IC} = 0, R_S = 50\ \Omega$	25°C	0.8	3.1	mV	
			Full range	4			
			25°C	0.6	2.6		
			Full range	3.5			
			25°C	0.5	1.9		
			Full range	2.4			
$\alpha V_{IO}$	Temperature coefficient of input offset voltage	$V_{IC} = 0, R_S = 50\ \Omega$	Full range	6		$\mu\text{V}/^\circ\text{C}$	
	Input offset voltage long-term drift (see Note 4)		25°C	0.04		$\mu\text{V}/\text{mo}$	
$I_{IO}$	Input offset current		25°C	1		pA	
			Full range	0.8		nA	
$I_{IB}$	Input bias current		25°C	3		pA	
			Full range	2		nA	
$V_{ICR}$	Common-mode input voltage range		25°C	-1.6 to 4	-2 to 6	V	
			Full range	-1.6 to 4		V	
$V_{OM+}$	Maximum positive peak output voltage swing	$R_L = 10\ \text{k}\Omega$	25°C	3.5	3.7	V	
			Full range	3.3			
			25°C	2.5	3.1		
		$R_L = 100\ \Omega$	Full range	2			
$V_{OM-}$	Maximum negative peak output voltage swing	$R_L = 10\ \text{k}\Omega$	25°C	-3.7	-3.9	V	
			Full range	-3.3			
			25°C	-2.5	-2.7		
		$R_L = 100\ \Omega$	Full range	-2			
$A_{VD}$	Large-signal differential voltage amplification	$V_O = \pm 2.8\ \text{V}, R_L = 10\ \text{k}\Omega$	25°C	15	80	V/mV	
			Full range	2			
			25°C	0.75	45		
			Full range	0.5			
			25°C	0.5	3		
			Full range	0.25			
$r_i$	Input resistance		25°C	$10^{12}$		$\Omega$	
$c_i$	Input capacitance		25°C	4		pF	
$Z_o$	Open-loop output impedance	$I_O = 0$	25°C	280		$\Omega$	
CMRR	Common-mode rejection ratio	$V_{IC} = V_{ICRmin}, R_S = 50\ \Omega$	25°C	65	82	dB	
			Full range	65			
kSVR	Supply-voltage rejection ratio ( $\Delta V_{CC\pm} / \Delta V_{IO}$ )	$V_{CC\pm} = \pm 5\ \text{V}$ to $\pm 15\ \text{V}, R_S = 50\ \Omega$	25°C	75	93	dB	
			Full range	75			
$I_{CC}$	Supply current	$V_O = 0, \text{ No load}$	25°C	280	325	$\mu\text{A}$	
			Full range	350			
$\Delta I_{CC}$	Supply-current change over operating temperature range		Full range	29		$\mu\text{A}$	

† Full range is 0°C to 70°C.

NOTE 4: Typical values are based on the input offset voltage shift observed through 168 hours of operating life test at  $T_A = 150^\circ\text{C}$  extrapolated to  $T_A = 25^\circ\text{C}$  using the Arrhenius equation and assuming an activation energy of 0.96 eV.

8961724 0107477 348



POST OFFICE BOX 655303 • DALLAS, TEXAS 75265

**TLE2161, TLE2161A, TLE2161B**  
**EXCALIBUR JFET-INPUT HIGH-OUTPUT-DRIVE**  
**μPOWER OPERATIONAL AMPLIFIERS**  
SLOS049D - NOVEMBER 1989 - REVISED MAY 1996

operating characteristics at specified free-air temperature,  $V_{CC} \pm = \pm 5$  V (unless otherwise noted)

PARAMETER	TEST CONDITIONS	$T_A$ †	TLE2161C, TLE2161AC TLE2161BC			UNIT
			MIN	TYP	MAX	
SR    Slew rate (see Figure 1)	$A_{VD} = 5, \quad R_L = 10 \text{ k}\Omega, \quad C_L = 100 \text{ pF}$	25°C	7	10		V/μs
		Full range	5			
$V_n$ Equivalent input noise voltage (see Figure 2)	$R_S = 20 \Omega, \quad f = 10 \text{ Hz}$	25°C		59	100	nV/√Hz
	$R_S = 20 \Omega, \quad f = 1 \text{ kHz}$			43	60	
$V_n(PP)$ Peak-to-peak equivalent input noise voltage	$f = 0.1 \text{ Hz to } 10 \text{ Hz}$	25°C	1.1		μV	
$I_n$ Equivalent input noise current	$f = 1 \text{ kHz}$	25°C	1		fA/√Hz	
THD    Total harmonic distortion	$V_O(PP) = 2 \text{ V}, \quad A_{VD} = 5, \quad f = 10 \text{ kHz}, \quad R_L = 10 \text{ k}\Omega$	25°C	0.025%			
Gain-bandwidth product (see Figure 3)	$f = 100 \text{ kHz}, \quad R_L = 10 \text{ k}\Omega, \quad C_L = 100 \text{ pF}$	25°C	5.8		MHz	
	$f = 100 \text{ kHz}, \quad R_L = 100 \text{ k}\Omega, \quad C_L = 100 \text{ pF}$		4.3			
$t_s$ Settling time	$\epsilon = 0.1\%$	25°C	5		μs	
	$\epsilon = 0.01\%$		10			
BOM    Maximum output-swing bandwidth	$A_{VD} = 5, \quad R_L = 10 \text{ k}\Omega$	25°C	420		kHz	
$\phi_m$ Phase margin (see Figure 3)	$A_{VD} = 5, \quad R_L = 10 \text{ k}\Omega, \quad C_L = 100 \text{ pF}$	25°C	70°			
	$A_{VD} = 5, \quad R_L = 100 \Omega, \quad C_L = 100 \text{ pF}$		84°			

† Full range is 0°C to 70°C.

8961724 0107478 284



POST OFFICE BOX 655303 • DALLAS, TEXAS 75265

**TLE2161, TLE2161A, TLE2161B**  
**EXCALIBUR JFET-INPUT HIGH-OUTPUT-DRIVE**  
 **$\mu$ POWER OPERATIONAL AMPLIFIERS**

SLOS049D – NOVEMBER 1989 – REVISED MAY 1996

**electrical characteristics at specified free-air temperature,  $V_{CC} \pm \pm 15$  V (unless otherwise noted)**

PARAMETER		TEST CONDITIONS	$T_A$ †	TLE2161C, TLE2161AC TLE2161BC			UNIT
				MIN	TYP	MAX	
$V_{IO}$	Input offset voltage	$V_{IC} = 0, R_S = 50 \Omega$	25°C	0.6	3	mV	
			Full range				3.9
			25°C	0.5	1.5		
			Full range				2.5
			25°C	0.3	0.5		
			Full range				1
$\alpha_{VIO}$	Temperature coefficient of input offset voltage	$V_{IC} = 0, R_S = 50 \Omega$	Full range	6		$\mu V/^\circ C$	
	Input offset voltage long-term drift (see Note 4)		25°C	0.04		$\mu V/mo$	
$I_{IO}$	Input offset current		25°C	2		pA	
			Full range		1	nA	
$I_{IB}$	Input bias current		25°C	4		pA	
			Full range		3	nA	
$V_{ICR}$	Common-mode input voltage range		25°C	-11 to 13	-12 to 16	V	
			Full range	-11 to 13		V	
$V_{OM+}$	Maximum positive peak output voltage swing	$R_L = 10 k\Omega$	25°C	13.2	13.7	V	
			Full range	13			
		$R_L = 600 \Omega$	25°C	12.5	13.2		
			Full range	12			
$V_{OM-}$	Maximum negative peak output voltage swing	$R_L = 10 k\Omega$	25°C	-13.2	-13.7	V	
			Full range	-13			
		$R_L = 600 \Omega$	25°C	-12.5	-13		
			Full range	-12			
$A_{VD}$	Large-signal differential voltage amplification	$V_O = \pm 10$ V, $R_L = 10 k\Omega$	25°C	30	230	V/mV	
			Full range	20			
		$V_O = 0$ to 8 V, $R_L = 600 \Omega$	25°C	25	100		
			Full range	10			
		$V_O = 0$ to -8 V, $R_L = 600 \Omega$	25°C	3	25		
			Full range	1			
$r_i$	Input resistance		25°C			$\Omega$	
$C_i$	Input capacitance		25°C	4		pF	
$Z_o$	Open-loop output impedance	$I_O = 0$	25°C	280		$\Omega$	
CMRR	Common-mode rejection ratio	$V_{IC} = V_{ICRmin}, R_S = 50 \Omega$	25°C	72	90	dB	
			Full range	70			
$k_{SVR}$	Supply-voltage rejection ratio ( $\Delta V_{CC\pm} / \Delta V_{IO}$ )	$V_{CC\pm} = \pm 5$ V to $\pm 15$ V, $R_S = 50 \Omega$	25°C	75	93	dB	
			Full range	75			
$I_{CC}$	Supply current	$V_O = 0, \text{ No load}$	25°C	290	350	$\mu A$	
			Full range		375		
$\Delta I_{CC}$	Supply-current change over operating temperature range		Full range	34		$\mu A$	

† Full range is 0°C to 70°C.

NOTE 4: Typical values are based on the input offset voltage shift observed through 168 hours of operating life test at  $T_A = 150^\circ C$  extrapolated to  $T_A = 25^\circ C$  using the Arrhenius equation and assuming an activation energy of 0.96 eV.

8961724 0107479 110



**TLE2161, TLE2161A, TLE2161B**  
**EXCALIBUR JFET-INPUT HIGH-OUTPUT-DRIVE**  
**μPOWER OPERATIONAL AMPLIFIERS**  
SLOS049D – NOVEMBER 1989 – REVISED MAY 1996

**operating characteristics at specified free-air temperature,  $V_{CC\pm} = \pm 15$  V (unless otherwise noted)**

PARAMETER	TEST CONDITIONS	$T_A$ †	TLE2161C, TLE2161AC TLE2161BC			UNIT	
			MIN	TYP	MAX		
SR	Slew rate (see Figure 1)	$A_{VD} = 5$ , $R_L = 10$ k $\Omega$ , $C_L = 100$ pF	25°C	7	10	V/ $\mu$ s	
			Full range	5			
$V_n$	Equivalent input noise voltage (see Figure 2)	$R_S = 20$ $\Omega$ , $f = 10$ Hz	25°C		70	100	nV/ $\sqrt{Hz}$
				$R_S = 20$ $\Omega$ , $f = 1$ kHz	40	60	
$V_n(PP)$	Peak-to-peak equivalent input noise voltage	$f = 0.1$ Hz to 10 Hz	25°C	1.1		$\mu$ V	
$I_n$	Equivalent input noise current	$f = 1$ kHz	25°C	1.1		fA/ $\sqrt{Hz}$	
THD	Total harmonic distortion	$V_{O(PP)} = 2$ V, $R_L = 10$ k $\Omega$ , $A_{VD} = 5$ , $f = 10$ kHz	25°C	0.025%			
	Gain-bandwidth product (see Figure 3)	$f = 100$ kHz, $R_L = 10$ k $\Omega$ , $C_L = 100$ pF	25°C	6.4		MHz	
		$f = 100$ kHz, $R_L = 600$ $\Omega$ , $C_L = 100$ pF		5.6			
$t_s$	Settling time	$\epsilon = 0.1\%$ $\epsilon = 0.01\%$	25°C	5		$\mu$ s	
				10			
BOM	Maximum output-swing bandwidth	$A_{VD} = 5$ , $R_L = 10$ k $\Omega$	25°C	116		kHz	
$\phi_m$	Phase margin (see Figure 3)	$A_{VD} = 5$ , $R_L = 10$ k $\Omega$ , $C_L = 100$ pF	25°C	72°			
		$A_{VD} = 5$ , $R_L = 600$ $\Omega$ , $C_L = 100$ pF		78°			

† Full range is 0°C to 70°C.

8961724 0107480 932



**TLE2161, TLE2161A, TLE2161B**  
**EXCALIBUR JFET-INPUT HIGH-OUTPUT-DRIVE**  
**μPOWER OPERATIONAL AMPLIFIERS**  
 SLOS049D – NOVEMBER 1989 – REVISED MAY 1996

**electrical characteristics at specified free-air temperature,  $V_{CC} \pm = \pm 5$  V (unless otherwise noted)**

PARAMETER		TEST CONDITIONS	$T_A$ †	TLE2161I, TLE2161AI TLE2161BI			UNIT				
				MIN	TYP	MAX					
$V_{IO}$	Input offset voltage	$V_{IC} = 0, R_S = 50 \Omega$	25°C	0.8		3.1	mV				
				Full range				4.4			
			25°C	0.6		2.6					
				Full range				3.9			
			25°C	0.5		1.9					
				Full range				2.7			
			$\alpha_{VIO}$	Temperature coefficient of input offset voltage	$V_{IC} = 0, R_S = 50 \Omega$	Full range			6	$\mu V/^\circ C$	
				Input offset voltage long-term drift (see Note 4)		25°C		0.04		$\mu V/mo$	
$I_{IO}$	Input offset current	$V_{IC} = 0, R_S = 50 \Omega$	25°C	1		pA					
			Full range			2		nA			
$I_{IB}$	Input bias current	$V_{IC} = 0, R_S = 50 \Omega$	25°C	3		pA					
			Full range			4		nA			
$V_{ICR}$	Common-mode input voltage range	$V_{IC} = 0, R_S = 50 \Omega$	25°C	-1.6 to 4	-2 to 6	V					
			Full range				-1.6 to 4				
$V_{OM+}$	Maximum positive peak output voltage	$R_L = 10 k\Omega$	25°C	3.5	3.7	V					
			Full range				3.1				
			25°C	$R_L = 100 \Omega$			2.5	3.1			
				Full range			2				
$V_{OM-}$	Maximum negative peak output voltage swing	$R_L = 10 k\Omega$	25°C	-3.7	-3.9	V					
			Full range				-3.1				
			25°C	$R_L = 100 \Omega$			-2.5	-2.7			
				Full range			-2				
$AVD$	Large-signal differential voltage amplification	$V_O = \pm 2.8$ V, $R_L = 10 k\Omega$	25°C	15	80	V/mV					
			Full range				2				
		$V_O = 0$ to 2 V, $R_L = 100 \Omega$	25°C	0.75	45						
			Full range				0.5				
		$V_O = 0$ to -2 V, $R_L = 100 \Omega$	25°C	0.5	3						
			Full range				0.25				
$r_i$	Input resistance		25°C	$10^{12}$		$\Omega$					
$c_i$	Input capacitance		25°C	4		pF					
$Z_o$	Open-loop output impedance	$I_O = 0$	25°C	280		$\Omega$					
CMRR	Common-mode rejection ratio	$V_{IC} = V_{ICRmin}, R_S = 50 \Omega$	25°C	65	82	dB					
			Full range				65				
$k_{SVR}$	Supply-voltage rejection ratio ( $\Delta V_{CC\pm} / \Delta V_{IO}$ )	$V_{CC\pm} = \pm 5$ V to $\pm 15$ V, $R_S = 50 \Omega$	25°C	75	93	dB					
			Full range				65				
$I_{CC}$	Supply current	$V_O = 0, \text{ No load}$	25°C	280	325	$\mu A$					
			Full range				350				
$\Delta I_{CC}$	Supply-current change over operating temperature range	$V_O = 0, \text{ No load}$	Full range			29	$\mu A$				

† Full range is -40°C to 85°C.

NOTE 4: Typical values are based on the input offset voltage shift observed through 168 hours of operating life test at  $T_A = 150^\circ C$  extrapolated to  $T_A = 25^\circ C$  using the Arrhenius equation and assuming an activation energy of 0.96 eV.

8961724 0107481 879





**TLE2161, TLE2161A, TLE2161B**  
**EXCALIBUR JFET-INPUT HIGH-OUTPUT-DRIVE**  
**μPOWER OPERATIONAL AMPLIFIERS**  
SLOS049D – NOVEMBER 1989 – REVISED MAY 1996

**operating characteristics at specified free-air temperature,  $V_{CC} \pm \pm 5\text{ V}$  (unless otherwise noted)**

PARAMETER	TEST CONDITIONS	$T_A$ †	TLE2161, TLE2161AI TLE2161BI			UNIT
			MIN	TYP	MAX	
SR	Slew rate (see Figure 1)	$A_{VD} = 5$ , $R_L = 10\text{ k}\Omega$ , $C_L = 100\text{ pF}$	25°C	7	10	$V/\mu\text{s}$
			Full range	5		
$V_n$	Equivalent input noise voltage (see Figure 2)	$R_S = 20\ \Omega$ , $f = 10\text{ Hz}$	25°C	59	100	$nV/\sqrt{\text{Hz}}$
				$R_S = 20\ \Omega$ , $f = 1\text{ kHz}$	43	
$V_n(PP)$	Peak-to-peak equivalent input noise voltage	$f = 0.1\text{ Hz to }10\text{ Hz}$	25°C	1.1		$\mu\text{V}$
$I_n$	Equivalent input noise current	$f = 1\text{ kHz}$	25°C	1		$fA/\sqrt{\text{Hz}}$
THD	Total harmonic distortion	$V_O(PP) = 2\text{ V}$ , $A_{VD} = 5$ , $R_L = 10\text{ k}\Omega$ , $f = 10\text{ kHz}$	25°C	0.025%		
	Gain-bandwidth product (see Figure 3)	$f = 100\text{ kHz}$ , $R_L = 10\text{ k}\Omega$ , $C_L = 100\text{ pF}$	25°C	5.8		MHz
		$f = 100\text{ kHz}$ , $R_L = 100\ \Omega$ , $C_L = 100\text{ pF}$		4.3		
$t_s$	Settling time	$\epsilon = 0.1\%$ $\epsilon = 0.01\%$	25°C	5		$\mu\text{s}$
				10		
BOM	Maximum output-swing bandwidth	$A_{VD} = 5$ , $R_L = 10\text{ k}\Omega$	25°C	420		kHz
$\phi_m$	Phase margin (see Figure 3)	$A_{VD} = 5$ , $R_L = 10\text{ k}\Omega$ , $C_L = 100\text{ pF}$	25°C	70°		
		$A_{VD} = 5$ , $R_L = 100\ \Omega$ , $C_L = 100\text{ pF}$		84°		

† Full range is  $-40^\circ\text{C}$  to  $85^\circ\text{C}$ .

8961724 0107482 705



**TLE2161, TLE2161A, TLE2161B**  
**EXCALIBUR JFET-INPUT HIGH-OUTPUT-DRIVE**  
**μPOWER OPERATIONAL AMPLIFIERS**  
 SLOS049D – NOVEMBER 1989 – REVISED MAY 1996

electrical characteristics at specified free-air temperature,  $V_{CC} \pm \pm 15\text{ V}$  (unless otherwise noted)

PARAMETER		TEST CONDITIONS	$T_A^\dagger$	TLE2161I, TLE2161AI TLE2161BI			UNIT
				MIN	TYP	MAX	
$V_{IO}$	Input offset voltage	$V_{IC} = 0, R_S = 50\ \Omega$	25°C	0.6		3	mV
			Full range			4.3	
			25°C	0.5		1.5	
			Full range			2.9	
			25°C	0.3		0.5	
			Full range			1.3	
$\alpha_{VIO}$	Temperature coefficient of input offset voltage	$V_{IC} = 0, R_S = 50\ \Omega$	Full range	6		$\mu\text{V}/^\circ\text{C}$	
	Input offset voltage long-term drift (see Note 4)		25°C	0.04		$\mu\text{V}/\text{mo}$	
$I_{IO}$	Input offset current		25°C	2		pA	
$I_{IB}$	Input bias current		Full range	3		nA	
			25°C	4		pA	
$I_{IB}$	Input bias current		Full range	5		nA	
$V_{ICR}$	Common-mode input voltage range		25°C	-11 to 13	-12 to 16	V	
			Full range	-11 to 13		V	
$V_{OM+}$	Maximum positive peak output voltage swing	$R_L = 10\ \text{k}\Omega$	25°C	13.2	13.7	V	
			Full range	13			
		$R_L = 600\ \Omega$	25°C	12.5	13.2		
			Full range	12			
$V_{OM-}$	Maximum negative peak output voltage swing	$R_L = 10\ \text{k}\Omega$	25°C	-13.2	-13.7	V	
			Full range	-13			
		$R_L = 600\ \Omega$	25°C	-12.5	-13		
			Full range	-12			
$A_{VD}$	Large-signal differential voltage amplification	$V_O = \pm 10\ \text{V}, R_L = 10\ \text{k}\Omega$	25°C	30	230	V/mV	
			Full range	20			
		$V_O = 0\ \text{to}\ 8\ \text{V}, R_L = 600\ \Omega$	25°C	25	100		
			Full range	10			
		$V_O = 0\ \text{to}\ -8\ \text{V}, R_L = 600\ \Omega$	25°C	3	25		
			Full range	1			
$r_i$	Input resistance		25°C	$10^{12}$		$\Omega$	
$c_i$	Input capacitance		25°C	4		pF	
$z_o$	Open-loop output impedance	$I_O = 0$	25°C	280		$\Omega$	
CMRR	Common-mode rejection ratio	$V_{IC} = V_{ICRmin}, R_S = 50\ \Omega$	25°C	72	90	dB	
			Full range	65			
$k_{SVR}$	Supply-voltage rejection ratio ( $\Delta V_{CC\pm} / \Delta V_{IO}$ )	$V_{CC\pm} = \pm 5\ \text{V to}\ \pm 15\ \text{V}, R_S = 50\ \Omega$	25°C	75	93	dB	
			Full range	65			
$I_{CC}$	Supply current	$V_O = 0, \text{ No load}$	25°C	290	350	$\mu\text{A}$	
			Full range	375			
$\Delta I_{CC}$	Supply-current change over operating temperature range		Full range	34		$\mu\text{A}$	

$^\dagger$  Full range is  $-40^\circ\text{C}$  to  $85^\circ\text{C}$ .

NOTE 4: Typical values are based on the input offset voltage shift observed through 168 hours of operating life test at  $T_A = 150^\circ\text{C}$  extrapolated to  $T_A = 25^\circ\text{C}$  using the Arrhenius equation and assuming an activation energy of 0.96 eV.

8961724 0107483 641



**TLE2161, TLE2161A, TLE2161B**  
**EXCALIBUR JFET-INPUT HIGH-OUTPUT-DRIVE**  
**μPOWER OPERATIONAL AMPLIFIERS**

SLOS049D – NOVEMBER 1989 – REVISED MAY 1996

**operating characteristics at specified free-air temperature,  $V_{CC} \pm \pm 15\text{ V}$  (unless otherwise noted)**

PARAMETER	TEST CONDITIONS	$T_A$ †	TLE2161I, TLE2161AI TLE2161IB			UNIT
			MIN	TYP	MAX	
SR	Slew rate (see Figure 1)	$A_{VD} = 5$ , $R_L = 10\text{ k}\Omega$ , $C_L = 100\text{ pF}$	25°C	7	10	V/ $\mu\text{s}$
			Full range	5		
$V_n$	Equivalent input noise voltage (see Figure 2)	$R_S = 20\ \Omega$ , $R_S = 20\ \Omega$ , $f = 10\text{ Hz}$ , $f = 1\text{ kHz}$	25°C	70	100	nV/ $\sqrt{\text{Hz}}$
				40	60	
$V_n(\text{PP})$	Peak-to-peak equivalent input noise voltage	$f = 0.1\text{ Hz to }10\text{ Hz}$	25°C	1.1	$\mu\text{V}$	
$I_n$	Equivalent input noise current	$f = 1\text{ kHz}$	25°C	1.1	fA/ $\sqrt{\text{Hz}}$	
THD	Total harmonic distortion	$V_{O(\text{PP})} = 2\text{ V}$ , $R_L = 10\text{ k}\Omega$ , $A_{VD} = 5$ , $f = 10\text{ kHz}$	25°C	0.025%		
	Gain-bandwidth product (see Figure 3)	$f = 100\text{ kHz}$ , $R_L = 10\text{ k}\Omega$ , $C_L = 100\text{ pF}$	25°C	6.4		MHz
		$f = 100\text{ kHz}$ , $R_L = 600\ \Omega$ , $C_L = 100\text{ pF}$		5.6		
$t_s$	Settling time	$\epsilon = 0.1\%$	25°C	5		$\mu\text{s}$
		$\epsilon = 0.01\%$		10		
$B_{OM}$	Maximum output-swing bandwidth	$A_{VD} = 5$ , $R_L = 10\text{ k}\Omega$	25°C	116		kHz
$\phi_m$	Phase margin (see Figure 3)	$A_{VD} = 5$ , $R_L = 10\text{ k}\Omega$ , $C_L = 100\text{ pF}$	25°C	72°		
		$A_{VD} = 5$ , $R_L = 600\ \Omega$ , $C_L = 100\text{ pF}$		78°		

† Full range is  $-40^\circ\text{C}$  to  $85^\circ\text{C}$ .

8961724 0107484 588



POST OFFICE BOX 655303 • DALLAS, TEXAS 75265

**TLE2161, TLE2161A, TLE2161B**  
**EXCALIBUR JFET-INPUT HIGH-OUTPUT-DRIVE**  
**μA POWER OPERATIONAL AMPLIFIERS**

SLOS049D – NOVEMBER 1989 – REVISED MAY 1996

**electrical characteristics at specified free-air temperature,  $V_{CC} \pm \pm 5\text{ V}$  (unless otherwise noted)**

PARAMETER		TEST CONDITIONS	$T_A^\dagger$	TLE2161M TLE2161AM TLE2161BM			UNIT
				MIN	TYP	MAX	
$V_{IO}$	Input offset voltage	$V_{IC} = 0, R_S = 50\ \Omega$	25°C	0.8	3.1	mV	
			Full range	6			
	25°C		0.6	2.6			
	Full range		4.6				
	25°C		0.5	1.9			
	Full range		3.1				
$\alpha_{VIO}$	Temperature coefficient of input offset voltage		Full range	6		$\mu\text{V}/^\circ\text{C}$	
	Input offset voltage long-term drift (see Note 4)		25°C	0.04		$\mu\text{V}/\text{mo}$	
$I_{IO}$	Input offset current		25°C	1		pA	
			Full range	15		nA	
$I_{IB}$	Input bias current		25°C	3		pA	
			Full range	30		nA	
$V_{ICR}$	Common-mode input voltage range		25°C	-1.6 to 4	-2 to 6	V	
			Full range	-1.6 to 4		V	
$V_{OM+}$	Maximum positive peak output voltage swing	All packages $R_L = 10\ \text{k}\Omega$	25°C	3.5	3.7	V	
			Full range	3			
		FK and JG packages $R_L = 600\ \Omega$	25°C	2.5	3.6	V	
	Full range		2				
		D and P packages $R_L = 100\ \Omega$	25°C	2.5	3.1	V	
	Full range		2				
$V_{OM-}$	Maximum negative peak output voltage swing	All packages $R_L = 10\ \text{k}\Omega$	25°C	-3.7	-3.9	V	
			Full range	-3			
		FK and JG packages $R_L = 600\ \Omega$	25°C	-2.5	-3.5	V	
	Full range		-2				
		D and P packages $R_L = 100\ \Omega$	25°C	-2.5	-2.7	V	
	Full range		-2				
$A_{VD}$	Large-signal differential voltage amplification	All packages $V_0 = \pm 2.8\ \text{V}, R_L = 10\ \text{k}\Omega$	25°C	15	80	V/mV	
			Full range	2			
		FK and JG packages $V_0 = 0\ \text{to}\ 2.5\ \text{V}, R_L = 600\ \Omega$	25°C	1	65		
			Full range	0.5			
		FK and JG packages $V_0 = 0\ \text{to}\ -2.5\ \text{V}, R_L = 600\ \Omega$	25°C	1	16		
			Full range	0.5			
		D and P packages $V_0 = 0\ \text{to}\ 2\ \text{V}, R_L = 100\ \Omega$	25°C	0.75	45		
			Full range	0.5			
			D and P packages $V_0 = 0\ \text{to}\ -2\ \text{V}, R_L = 100\ \Omega$	25°C	0.5		3
				Full range	0.25		

$^\dagger$  Full range is  $-55^\circ\text{C}$  to  $125^\circ\text{C}$ .

NOTE 4: Typical values are based on the input offset voltage shift observed through 168 hours of operating life test at  $T_A = 150^\circ\text{C}$  extrapolated to  $T_A = 25^\circ\text{C}$  using the Arrhenius equation and assuming an activation energy of 0.96 eV.

8961724 0107485 414



**TLE2161, TLE2161A, TLE2161B**  
**EXCALIBUR JFET-INPUT HIGH-OUTPUT-DRIVE**  
**μPOWER OPERATIONAL AMPLIFIERS**

SLOS049D – NOVEMBER 1989 – REVISED MAY 1996

**electrical characteristics at specified free-air temperature,  $V_{CC} \pm = \pm 5$  V (unless otherwise noted continued)**

PARAMETER	TEST CONDITIONS	$T_A$ †	TLE2161M TLE2161AM TLE2161BM			UNIT
			MIN	TYP	MAX	
$r_i$ Input resistance		25°C	10 <sup>12</sup>			Ω
$c_i$ Input capacitance		25°C	4			pF
$z_o$ Open-loop output impedance	$I_O = 0$	25°C	280			Ω
CMRR Common-mode rejection ratio	$V_{IC} = V_{ICRmin}, R_S = 50 \Omega$	25°C	65	82		dB
		Full range	60			
kSVR Supply-voltage rejection ratio ( $\Delta V_{CC\pm}/\Delta V_{IO}$ )	$V_{CC\pm} = \pm 5$ V to $\pm 15$ V, $R_S = 50 \Omega$	25°C	75	93		dB
		Full range	65			
$I_{CC}$ Supply current	$V_O = 0,$ No load	25°C	280	325		μA
		Full range	350			
$\Delta I_{CC}$ Supply-current change over operating temperature range		Full range	39			μA

† Full range is – 55°C to 125°C.

**operating characteristics,  $V_{CC} \pm = \pm 5$  V,  $T_A = 25^\circ\text{C}$**

PARAMETER	TEST CONDITIONS	TLE2161M TLE2161AM TLE2161BM			UNIT
		MIN	TYP	MAX	
SR Slew rate (see Figure 1)	$A_{VD} = 5, R_L = 10 \text{ k}\Omega, C_L = 100 \text{ pF}$	10			V/μs
$V_n$ Equivalent input noise voltage (see Figure 2)	$R_S = 20 \Omega, f = 10 \text{ Hz}$	59			nV/√Hz
	$R_S = 20 \Omega, f = 1 \text{ kHz}$	43			
$V_n(PP)$ Peak-to-peak equivalent input noise voltage	$f = 0.1 \text{ Hz to } 10 \text{ Hz}$	1.1			μV
$I_n$ Equivalent input noise current	$f = 1 \text{ kHz}$	1			fA/√Hz
THD Total harmonic distortion	$A_{VD} = 5, V_O(PP) = 2 \text{ V}, f = 10 \text{ kHz}, R_L = 10 \text{ k}\Omega$	0.025%			
Gain-bandwidth product (see Figure 3)	$f = 100 \text{ kHz}, R_L = 10 \text{ k}\Omega, C_L = 100 \text{ pF}$	5.8			MHz
	$f = 100 \text{ kHz}, R_L = 600 \text{ k}\Omega, C_L = 100 \text{ pF}$	4.3			
$t_s$ Settling time	$\epsilon = 0.1\%$	5			μs
	$\epsilon = 0.01\%$	10			
BOM Maximum output-swing bandwidth	$A_{VD} = 5, R_L = 10 \text{ k}\Omega$	420			kHz
$\phi_m$ Phase margin (see Figure 3)	$A_{VD} = 5, R_L = 10 \text{ k}\Omega, C_L = 100 \text{ pF}$	70°			
	$A_{VD} = 5, R_L = 600 \Omega, C_L = 100 \text{ pF}$	84°			

8961724 0107486 350



POST OFFICE BOX 655303 • DALLAS, TEXAS 75265

**TLE2161, TLE2161A, TLE2161B**  
**EXCALIBUR JFET-INPUT HIGH-OUTPUT-DRIVE**  
 **$\mu$ POWER OPERATIONAL AMPLIFIERS**

SLOS049D - NOVEMBER 1989 - REVISED MAY 1996

electrical characteristics at specified free-air temperature,  $V_{CC} \pm \pm 15$  V (unless otherwise noted)

PARAMETER		TEST CONDITIONS	$T_A$ †	TLE2161M TLE2161AM TLE2161BM			UNIT
				MIN	TYP	MAX	
$V_{IO}$	Input offset voltage	$V_{IC} = 0$ , $R_S = 50 \Omega$	25°C	0.6		3	mV
			Full range			6	
			25°C	0.5		1.5	
			Full range			3.6	
			25°C	0.3		0.5	
			Full range			1.7	
$\alpha_{VIO}$	Temperature coefficient of input offset voltage	$V_{IC} = 0$ , $R_S = 50 \Omega$	Full range	6		$\mu V/^\circ C$	
	Input offset voltage long-term drift (see Note 4)		25°C	0.04		$\mu V/mo$	
			25°C	2		pA	
$I_{IO}$	Input offset current	$V_{IC} = 0$ , $R_S = 50 \Omega$	Full range	20		nA	
$I_{IB}$	Input bias current		25°C	4		pA	
			Full range	40		nA	
$V_{ICR}$	Common-mode input voltage range		25°C	-11 to 13	-12 to 16	V	
			Full range	-11 to 13		V	
$V_{OM+}$	Maximum positive peak output voltage swing	$R_L = 10 k\Omega$	25°C	13.2	13.7	V	
			Full range	12.5			
		$R_L = 600 \Omega$	25°C	12.5	13.2		
			Full range	12			
$V_{OM-}$	Maximum negative peak output voltage swing	$R_L = 10 k\Omega$	25°C	-13.2	-13.7	V	
			Full range	-12.5			
		$R_L = 600 \Omega$	25°C	-12.5	-13		
			Full range	-12			
$A_{VD}$	Large-signal differential voltage amplification	$V_O = \pm 10$ V, $R_L = 10 k\Omega$	25°C	30	230	V/mV	
			Full range	20			
		$V_O = 0$ to 8 V, $R_L = 600 \Omega$	25°C	25	100		
			Full range	7			
		$V_O = 0$ to -8 V, $R_L = 600 \Omega$	25°C	3	25		
			Full range	1			
$r_i$	Input resistance		25°C	$10^{12}$		$\Omega$	
$c_i$	Input capacitance		25°C	4		pF	
$z_o$	Open-loop output impedance	$I_O = 0$	25°C	280		$\Omega$	
CMRR	Common-mode rejection ratio	$V_{IC} = V_{ICRmin}$ , $R_S = 50 \Omega$	25°C	72	90	dB	
			Full range	65			
$k_{SVR}$	Supply-voltage rejection ratio ( $\Delta V_{CC\pm} / \Delta V_{IO}$ )	$V_{CC\pm} = \pm 5$ V to $\pm 15$ V, $R_S = 50 \Omega$	25°C	75	93	dB	
			Full range	65			
$I_{CC}$	Supply current	$V_O = 0$ , No load	25°C	290	350	$\mu A$	
			Full range	375			
$\Delta I_{CC}$	Supply-current change over operating temperature range		Full range	46		$\mu A$	

† Full range is -55°C to 125°C.

NOTE 4: Typical values are based on the input offset voltage shift observed through 168 hours of operating life test at  $T_A = 150^\circ C$  extrapolated to  $T_A = 25^\circ C$  using the Arrhenius equation and assuming an activation energy of 0.96 eV.

8961724 0107487 297



**TLE2161, TLE2161A, TLE2161B**  
**EXCALIBUR JFET-INPUT HIGH-OUTPUT-DRIVE**  
 **$\mu$ POWER OPERATIONAL AMPLIFIERS**

SLOS049D – NOVEMBER 1989 – REVISED MAY 1996

**operating characteristics at specified free-air temperature,  $V_{CC} \pm = \pm 15$  V (unless otherwise noted)**

PARAMETER	TEST CONDITIONS	T <sub>A</sub> †	TLE2161M TLE2161AM TLE2161BM			UNIT
			MIN	TYP	MAX	
SR Slew rate (see Figure 1)	A <sub>VD</sub> = 5, R <sub>L</sub> = 10 k $\Omega$ , C <sub>L</sub> = 100 pF	25°C	7	10		V/ $\mu$ s
		Full range	5			
V <sub>n</sub> Equivalent input noise voltage (see Figure 2)	R <sub>S</sub> = 20 $\Omega$ , f = 10 Hz	25°C	70		nV/ $\sqrt{\text{Hz}}$	
	R <sub>S</sub> = 20 $\Omega$ , f = 1 kHz		40			
V <sub>N(PP)</sub> Peak-to-peak equivalent input noise voltage	f = 0.1 Hz to 10 Hz	25°C	1.1		$\mu$ V	
I <sub>n</sub> Equivalent input noise current	f = 1 Hz	25°C	1.1		fA/ $\sqrt{\text{Hz}}$	
THD Total harmonic distortion	V <sub>O(PP)</sub> = 2 V, A <sub>VD</sub> = 5, f = 10 kHz, R <sub>L</sub> = 10 k $\Omega$	25°C	0.025%			
Gain-bandwidth product (see Figure 3)	f = 100 kHz, R <sub>L</sub> = 10 k $\Omega$ , C <sub>L</sub> = 100 pF	25°C	6.4		MHz	
	f = 100 kHz, R <sub>L</sub> = 600 $\Omega$ , C <sub>L</sub> = 100 pF		5.6			
t <sub>s</sub> Settling time	$\epsilon$ = 0.1%	25°C	5		$\mu$ s	
	$\epsilon$ = 0.01%		10			
B <sub>OM</sub> Maximum output-swing bandwidth	A <sub>VD</sub> = 5, R <sub>L</sub> = 10 k $\Omega$	25°C	116		kHz	
$\phi_m$ Phase margin (see Figure 3)	A <sub>VD</sub> = 5, R <sub>L</sub> = 10 k $\Omega$ , C <sub>L</sub> = 100 pF	25°C	72°			
	A <sub>VD</sub> = 5, R <sub>L</sub> = 600 $\Omega$ , C <sub>L</sub> = 100 pF		78°			

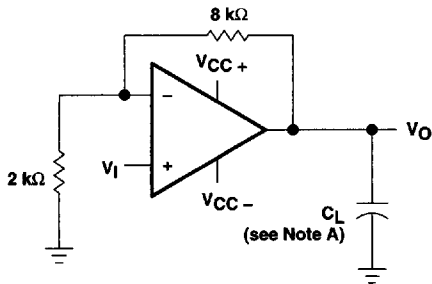
† Full range is – 55°C to 125°C.

8961724 0107488 123



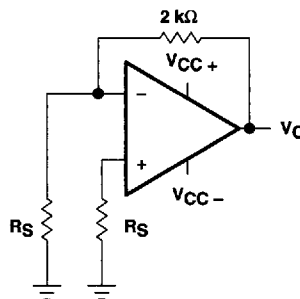
POST OFFICE BOX 655303 • DALLAS, TEXAS 75265

**PARAMETER MEASUREMENT INFORMATION**

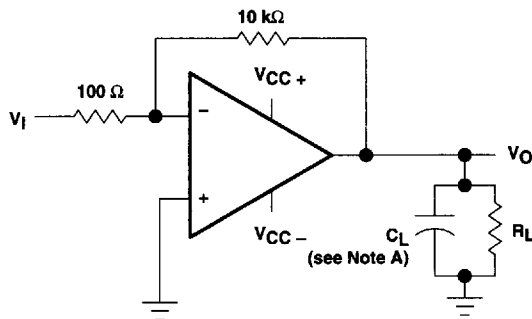


NOTE A:  $C_L$  includes fixture capacitance.

**Figure 1. Slew-Rate Test Circuit**



**Figure 2. Noise-Voltage Test Circuit**



NOTE A:  $C_L$  includes fixture capacitance.

**Figure 3. Gain-Bandwidth Product and Phase-Margin Test Circuit**

**typical values**

Typical values presented in this data sheet represent the median (50% point) of device parametric performance.

**Input bias and offset current**

At the picoampere bias-current level typical of the TLE2161, TLE2161A, and TLE2161B, accurate measurement of the bias current becomes difficult. Not only does this measurement require a picoammeter, but test socket leakages can easily exceed the actual device bias currents. To accurately measure these small currents, Texas Instruments uses a two-step process. The socket leakage is measured using picoammeters with bias voltages applied but with no device in the socket. The device is then inserted into the socket, and a second test that measures both the socket leakage and the device input bias current is performed. The two measurements are then subtracted algebraically to determine the bias current of the device.

■ 8961724 0107489 06T ■



**TLE2161, TLE2161A, TLE2161B**  
**EXCALIBUR JFET-INPUT HIGH-OUTPUT-DRIVE**  
 **$\mu$ POWER OPERATIONAL AMPLIFIERS**  
SLOS049D – NOVEMBER 1989 – REVISED MAY 1996

**TYPICAL CHARACTERISTICS**

**Table of Graphs**

			FIGURE
$V_{IO}$	Input offset voltage	Distribution	4
$I_{IB}$	Input bias current	vs Common-mode input voltage	5
		vs Free-air temperature	6
$I_{IO}$	Input offset current	vs Free-air temperature	6
$V_{ICR}$	Common-mode input voltage range limits	vs Free-air temperature	7
$V_{OM}$	Maximum positive peak output voltage	vs Output current	8
$V_{OM}$	Maximum negative peak output voltage	vs Output current	9
$V_{OM}$	Maximum peak output voltage	vs Supply voltage	10, 11, 12
$V_{O(PP)}$	Maximum peak-to-peak output voltage	vs Frequency	13, 14, 15
$A_{VD}$	Large-signal differential voltage amplification	vs Frequency	16
		vs Free-air temperature	17
$I_{OS}$	Short-circuit output current	vs Elapsed time	18
		Large-signal voltage amplification	19
$z_o$	Output impedance	vs Frequency	20
$CMRR$	Common-mode rejection ratio	vs Frequency	21
$I_{CC}$	Supply current	vs Supply voltage	22
		vs Free-air temperature	23
	Pulse response	Small signal	24, 25
		Large signal	26, 27
	Noise voltage (referred to input)	0.1 to 10 Hz	28
$V_n$	Equivalent input noise voltage	vs Frequency	29
$THD$	Total harmonic distortion	vs Frequency	30, 31
		vs Supply voltage	32
	Gain-bandwidth product	vs Free-air temperature	33
		vs Supply voltage	34
$\phi_m$	Phase margin	vs Free-air temperature	35
		vs Frequency	16
	Phase shift		

8961724 0107490 881



POST OFFICE BOX 655303 • DALLAS, TEXAS 75265

**TLE2161, TLE2161A, TLE2161B**  
**EXCALIBUR JFET-INPUT HIGH-OUTPUT-DRIVE**  
**μPOWER OPERATIONAL AMPLIFIERS**  
 SLOS049D – NOVEMBER 1989 – REVISED MAY 1996

**TYPICAL CHARACTERISTICS†**

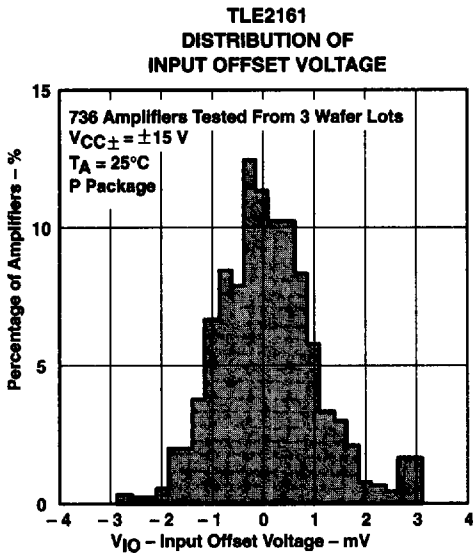


Figure 4

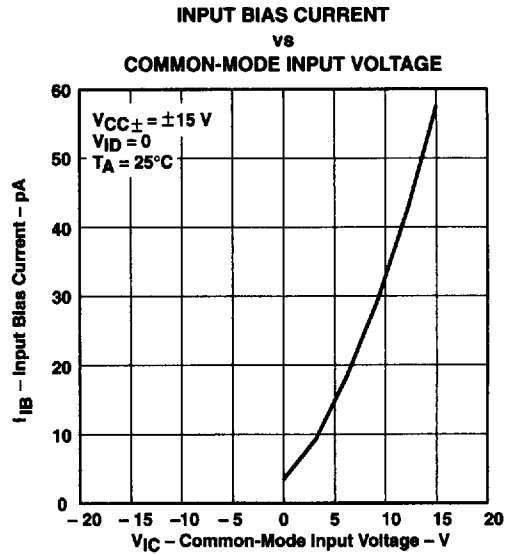


Figure 5

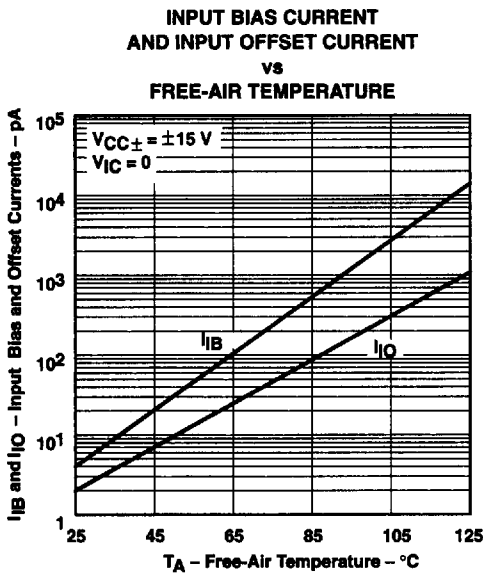


Figure 6

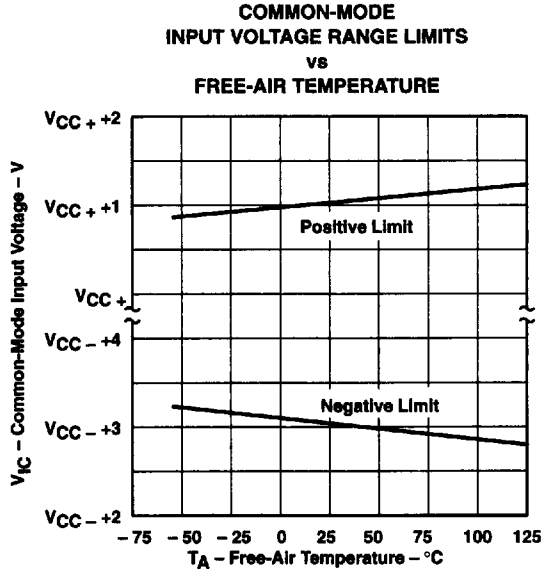


Figure 7

† Data at high and low temperatures are applicable only within the rated operating free-air temperature ranges of the various devices.

8961724 0107491 718



TYPICAL CHARACTERISTICS

MAXIMUM POSITIVE PEAK  
 OUTPUT VOLTAGE  
 vs  
 OUTPUT CURRENT

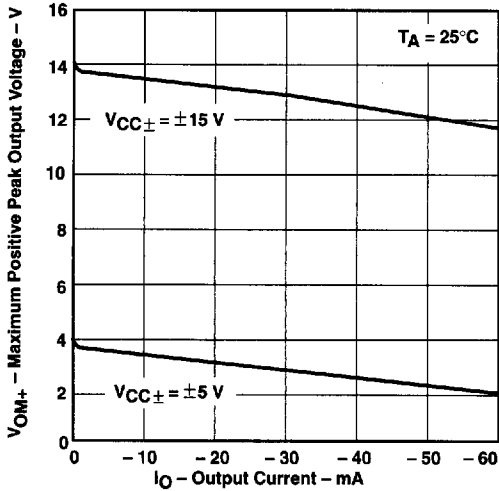


Figure 8

MAXIMUM NEGATIVE PEAK  
 OUTPUT VOLTAGE  
 vs  
 OUTPUT CURRENT

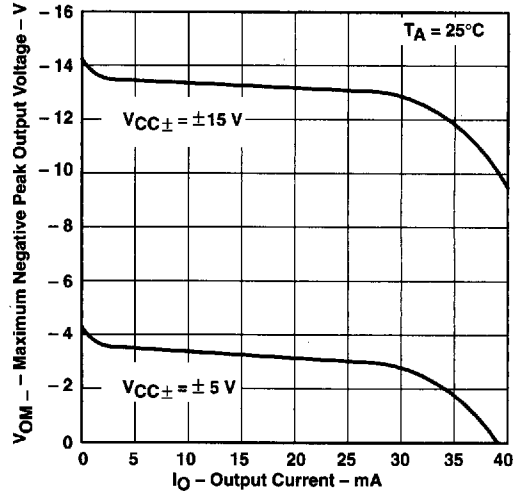


Figure 9

MAXIMUM PEAK OUTPUT VOLTAGE  
 vs  
 SUPPLY VOLTAGE

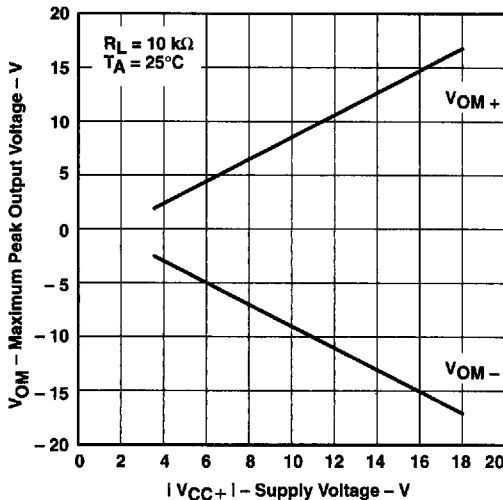


Figure 10

MAXIMUM PEAK OUTPUT VOLTAGE  
 vs  
 SUPPLY VOLTAGE

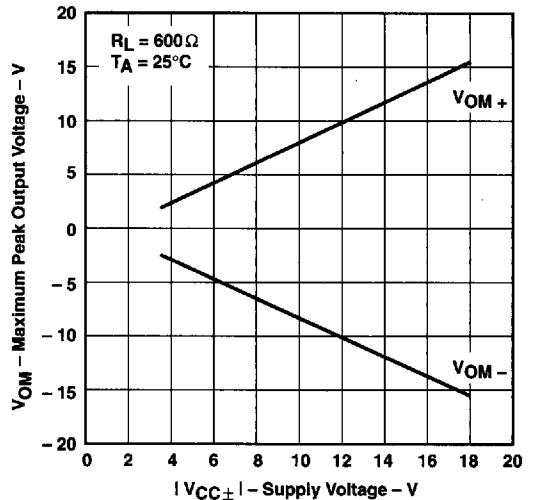


Figure 11

8961724 0107492 654

TYPICAL CHARACTERISTICS

MAXIMUM PEAK OUTPUT VOLTAGE  
 vs  
 SUPPLY VOLTAGE

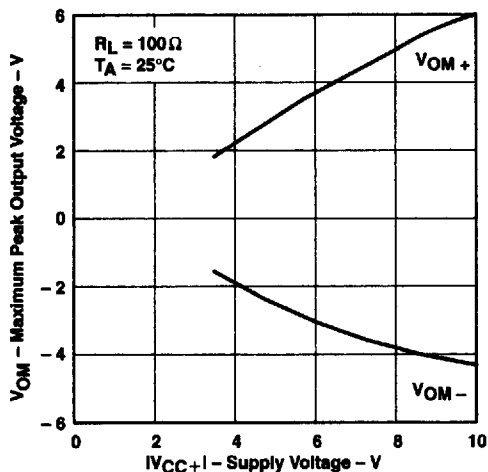


Figure 12

MAXIMUM PEAK-TO-PEAK  
 OUTPUT VOLTAGE  
 vs  
 FREQUENCY

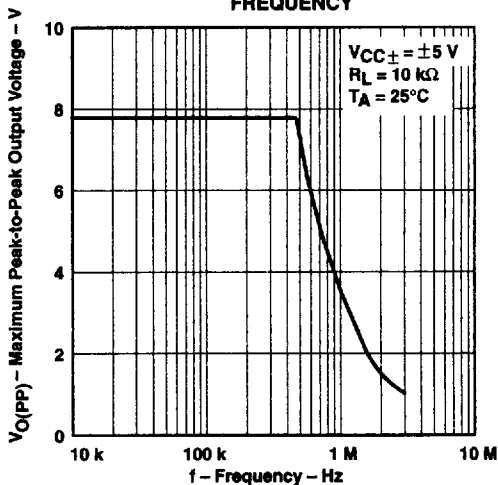


Figure 13

MAXIMUM PEAK-TO-PEAK  
 OUTPUT VOLTAGE  
 vs  
 FREQUENCY

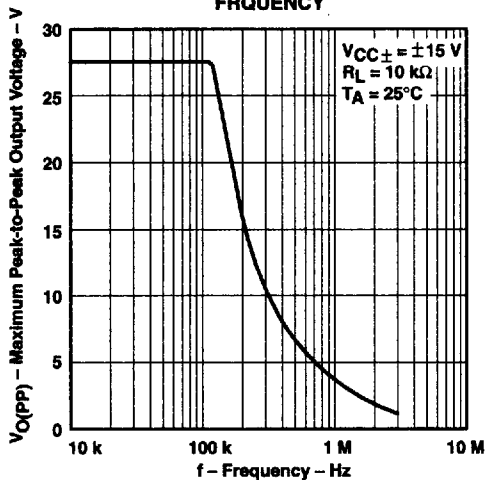


Figure 14

MAXIMUM PEAK-TO-PEAK  
 OUTPUT VOLTAGE  
 vs  
 FREQUENCY

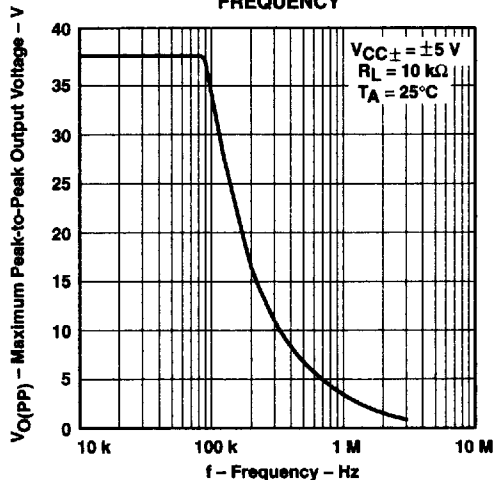


Figure 15

8961724 0107493 590



TYPICAL CHARACTERISTICS†

LARGE-SIGNAL DIFFERENTIAL VOLTAGE AMPLIFICATION AND PHASE SHIFT vs FREQUENCY

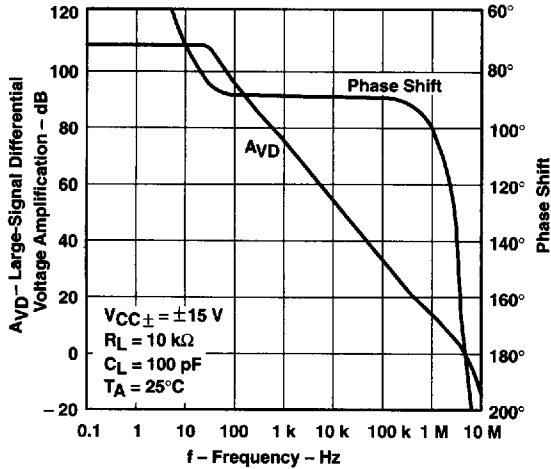


Figure 16

LARGE-SIGNAL DIFFERENTIAL VOLTAGE AMPLIFICATION vs FREE-AIR TEMPERATURE

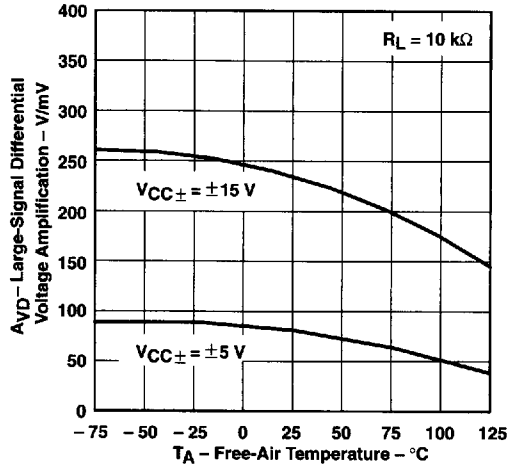


Figure 17

SHORT-CIRCUIT OUTPUT CURRENT vs ELAPSED TIME

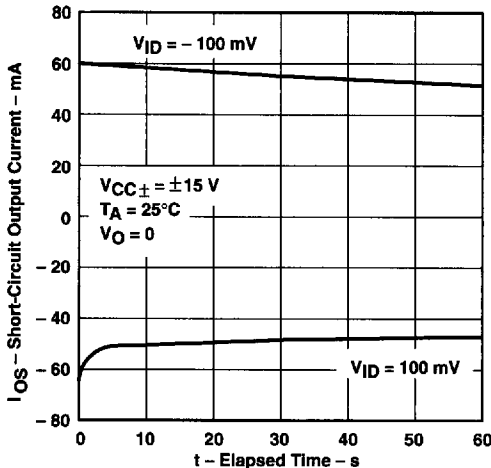


Figure 18

LARGE-SIGNAL VOLTAGE AMPLIFICATION vs FREE-AIR TEMPERATURE

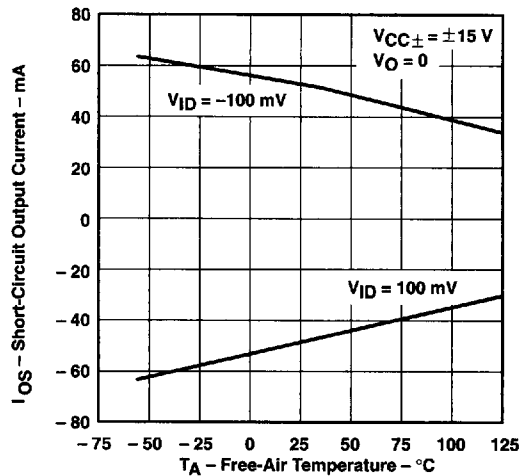


Figure 19

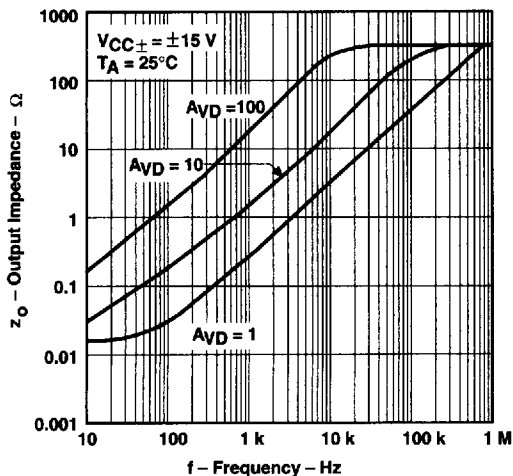
† Data at high and low temperatures are applicable only within the rated operating free-air temperature ranges of the various devices.

**TLE2161, TLE2161A, TLE2161B**  
**EXCALIBUR JFET-INPUT HIGH-OUTPUT-DRIVE**  
**μPOWER OPERATIONAL AMPLIFIERS**

SLOS049D - NOVEMBER 1989 - REVISED MAY 1996

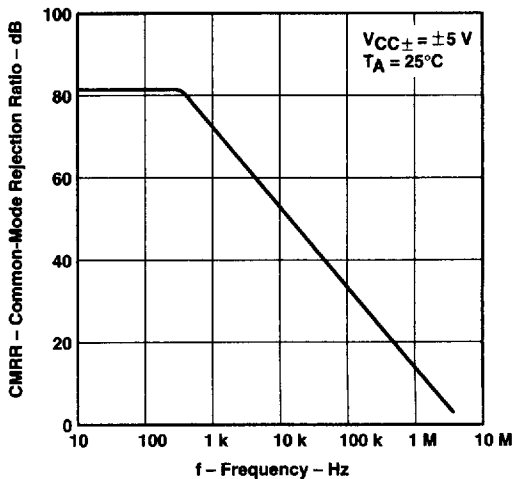
**TYPICAL CHARACTERISTICS†**

**OUTPUT IMPEDANCE**  
**vs**  
**FREQUENCY**



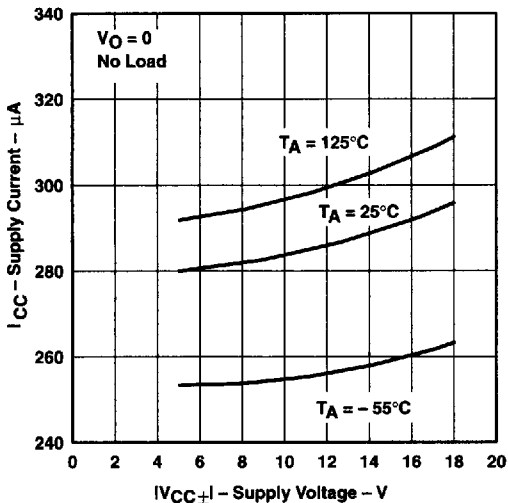
**Figure 20**

**COMMON-MODE REJECTION RATIO**  
**vs**  
**FREQUENCY**



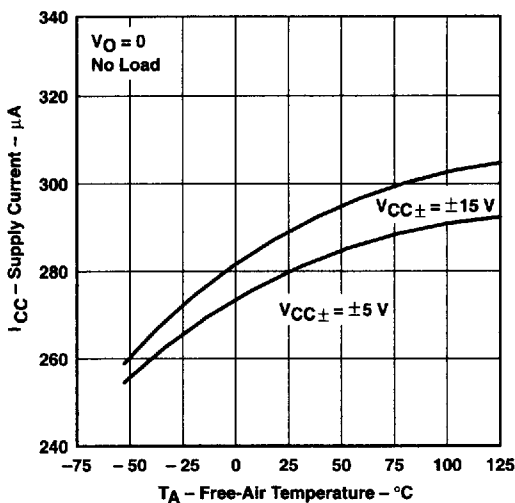
**Figure 21**

**SUPPLY CURRENT**  
**vs**  
**SUPPLY VOLTAGE**



**Figure 22**

**SUPPLY CURRENT**  
**vs**  
**FREE-AIR TEMPERATURE**



**Figure 23**

† Data at high and low temperatures are applicable only within the rated operating free-air temperature ranges of the various devices.

8961724 0107495 363



TYPICAL CHARACTERISTICS

SMALL-SIGNAL  
 PULSE RESPONSE

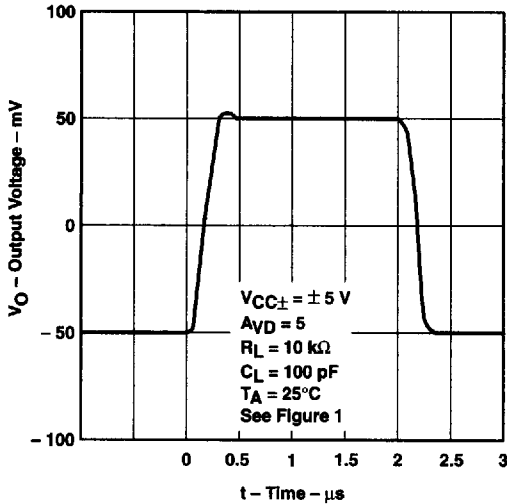


Figure 24

SMALL-SIGNAL  
 PULSE RESPONSE

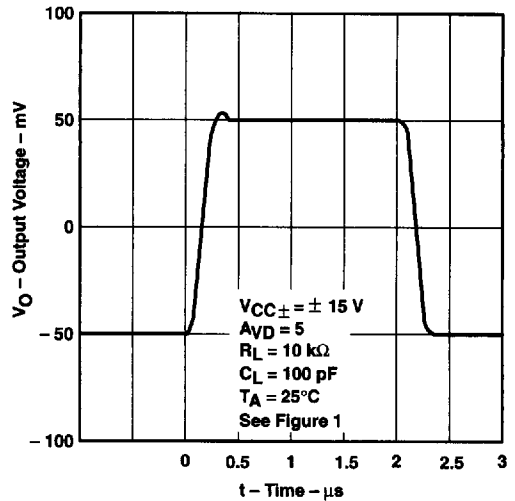


Figure 25

LARGE-SIGNAL  
 PULSE RESPONSE

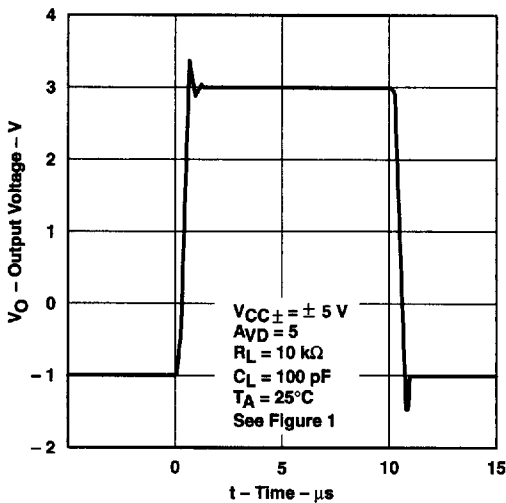


Figure 26

LARGE-SIGNAL  
 PULSE RESPONSE

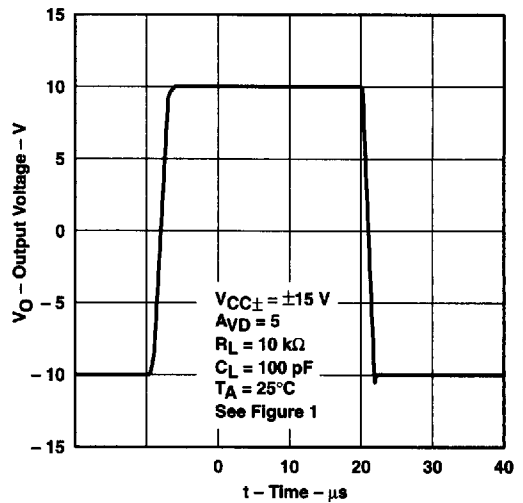


Figure 27

8961724 0107496 2TT

TYPICAL CHARACTERISTICS

NOISE VOLTAGE  
 (REFERRED TO INPUT)  
 OVER A 10-SECOND INTERVAL

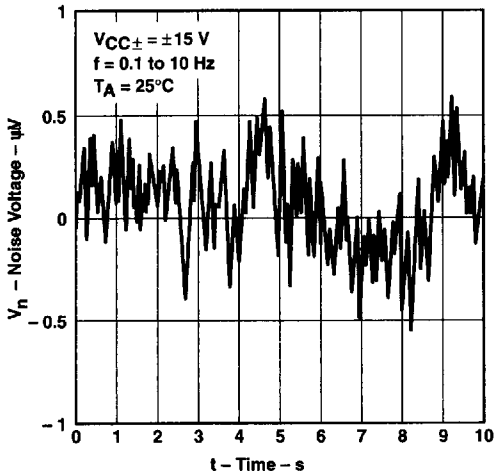


Figure 28

EQUIVALENT INPUT NOISE VOLTAGE  
 vs  
 FREQUENCY

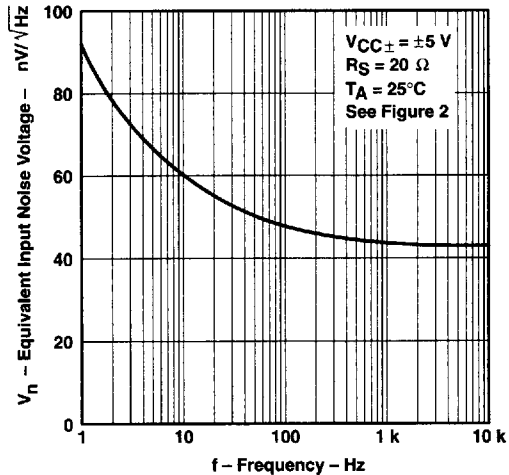


Figure 29

TOTAL HARMONIC DISTORTION  
 vs  
 FREQUENCY

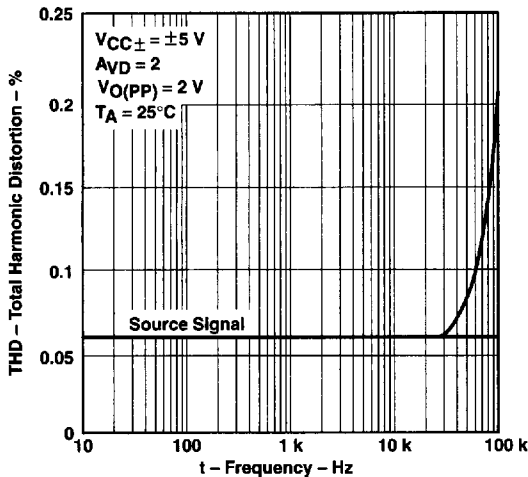


Figure 30

TOTAL HARMONIC DISTORTION  
 vs  
 FREQUENCY

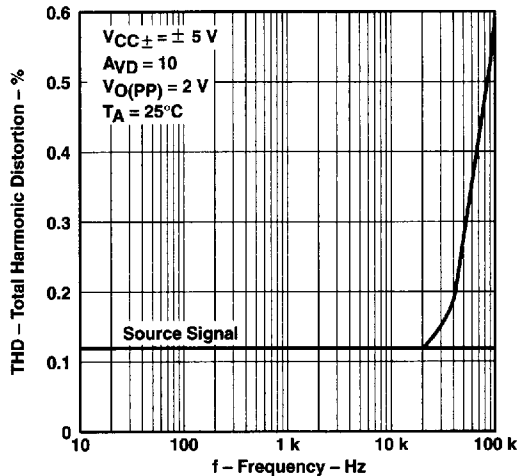


Figure 31

8961724 0107497 136



TYPICAL CHARACTERISTICS

GAIN-BANDWIDTH PRODUCT  
 vs  
 SUPPLY VOLTAGE

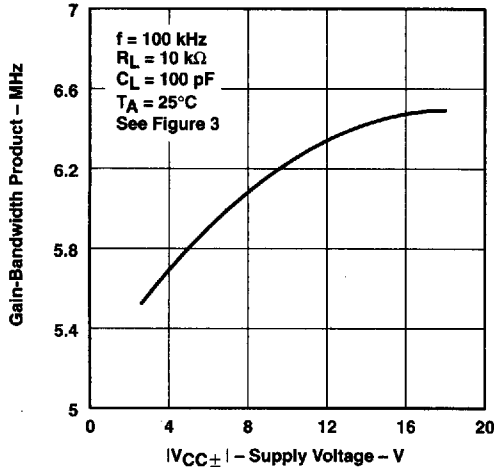


Figure 32

GAIN-BANDWIDTH PRODUCT  
 vs  
 FREE-AIR TEMPERATURE

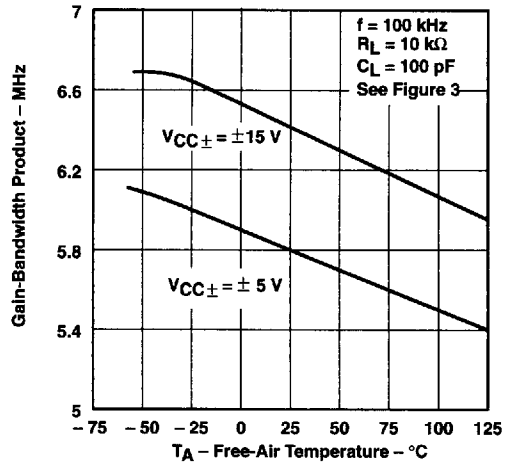


Figure 33

PHASE MARGIN  
 vs  
 SUPPLY VOLTAGE

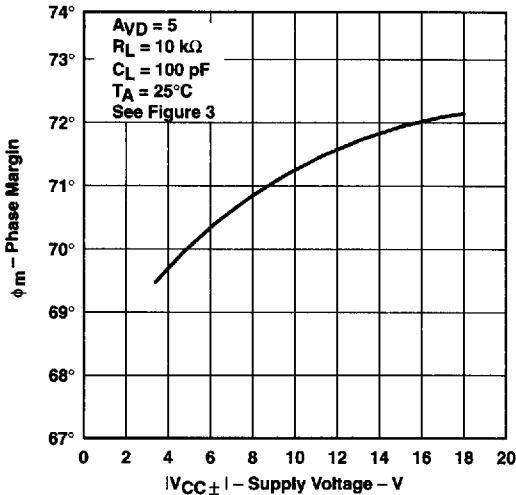


Figure 34

PHASE MARGIN  
 vs  
 FREE-AIR TEMPERATURE

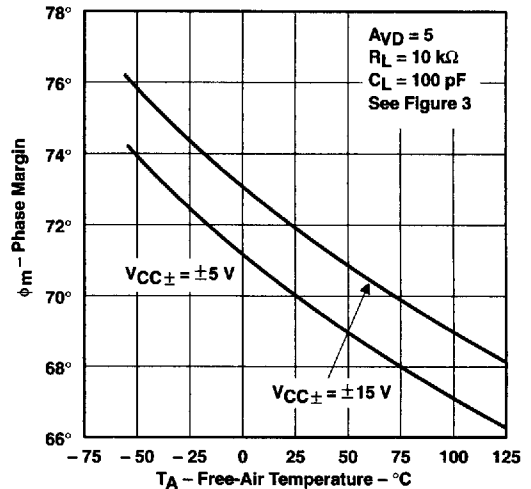


Figure 35

8961724 0107498 072

**TLE2161, TLE2161A, TLE2161B**  
**EXCALIBUR JFET-INPUT HIGH-OUTPUT-DRIVE**  
 **$\mu$ POWER OPERATIONAL AMPLIFIERS**

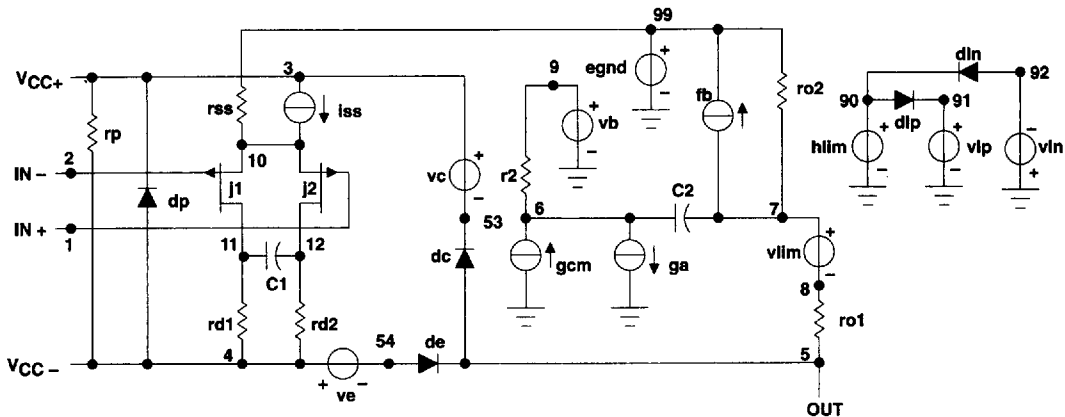
SLOS049D – NOVEMBER 1989 – REVISED MAY 1996

**APPLICATION INFORMATION**

**macromodel information**

Macromodel information provided was derived using Microsim *Parts*<sup>™</sup>, the model generation software used with Microsim *PSpice*<sup>™</sup>. The Boyle macromodel (see Note 5) and subcircuit in Figure 36 and Figure 37 were generated using the TLE2161 typical electrical and operating characteristics at 25°C. Using this information, output simulations of the following key parameters can be generated to a tolerance of 20% (in most cases):

- Maximum positive output voltage swing
- Maximum negative output voltage swing
- Slew rate
- Quiescent power dissipation
- Input bias current
- Open-loop voltage amplification
- Gain-bandwidth product
- Common-mode rejection ratio
- Phase margin
- DC output resistance
- AC output resistance
- Short-circuit output current limit



**Figure 36. Boyle Macromodel**

NOTE 5: G. R. Boyle, B. M. Cohn, D. O. Pederson, and J. E. Solomon, "Macromodeling of Integrated Circuit Operational Amplifiers", *IEEE Journal of Solid-State Circuits*, SC-9, 353 (1974).

**APPLICATION INFORMATION**

**macromodel information (continued)**

```
.subckt TLE2161 1 2 3 4 5
c1 11 12 125.4E-14
c2 6 7 5.000E-12
dc 5 53 dx
de 54 5d x
dlp 90 91 dx
dln 92 90 dx
dp 4 3 dx
egnd 99 0 poly(2) (3,0) (4,0) 0 .5 .5
fb 7 99 poly(5) vb vc ve vlp vln 0 4.085E6 -4E6 4E6 4E6 -4E6
ga 6 0 11 12 201.1E-6
gcm 0 6 10 99 3.576E-9
iss 3 10 dc 45.00E-6
hlim 90 0 vlim 1K
j1 11 2 10 jx
j2 12 1 10 jx
r2 6 9 100.0E3
rd1 4 11 4.973E3
rd2 4 12 4.973E3
rol 8 5 280
ro2 7 99 280
rp 3 4 113.2E3
rss 10 99 4.444E6
vb 9 0 dc 0
vc 3 53 dc 2
ve 54 4 dc 2
vlim 7 8 dc 0
vlp 91 0 dc 50
vln 0 92 dc 50
.model dx D (Is=800.0E-18)
.model jx PNF (Is=1.000E-12 Beta=480E-6 Vto=-1)
.ends
```

**Figure 37. Macromodel Subcircuit**

8961724 0107500 550

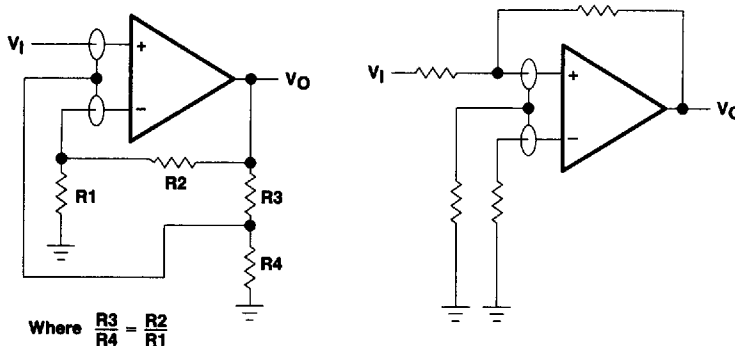


**APPLICATION INFORMATION**

**input characteristics**

The TLE2161, TLE2161A and TLE2161B are specified with a minimum and a maximum input voltage that if exceeded at either input could cause the device to malfunction.

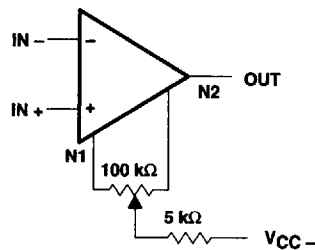
Because of the extremely high input impedance and resulting low bias-current requirements, the TLE2161, TLE2161A, and TLE2161B are well suited for low-level signal processing; however, leakage currents on printed circuit boards and sockets can easily exceed bias-current requirements and cause degradation in system performance. It is a good practice to include guard rings around inputs (see Figure 38). These guards should be driven from a low-impedance source at the same voltage level as the common-mode input.



**Figure 38. Use of Guard Rings**

**input offset voltage nulling**

The TLE2161 series offers external null pins that can further reduce the input offset voltage. The circuit in Figure 39 can be connected as shown if the feature is desired. When external nulling is not needed, the null pins may be left disconnected.



**Figure 39. Input Offset Voltage Nulling**

8961724 0107501 497