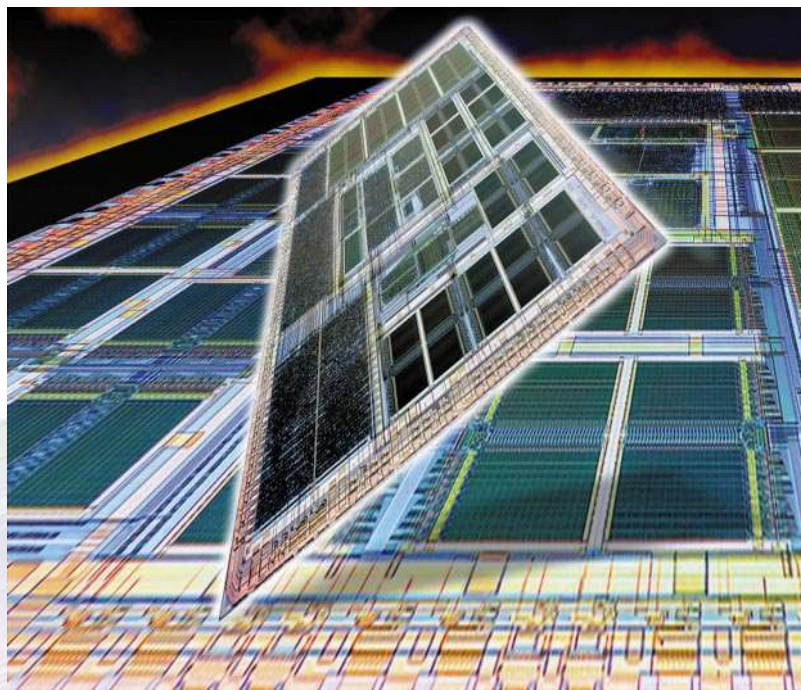


## Product Brief

### SAM PSB 2168 PSB 4860

Siemens Answering Machine  
with Analog Front End PSB 4851

The SAM Chipset with world-class Echo cancellation and voice processing technology and the analog front end PSB 4851 provide a flexible and modular approach for the design of digital answering machines with state-of-the-art features. Future versions with Voice-recognition



# SAM

#### Potential Applications

- Standalone digital answering machines
- Analog feature phones
- Cordless/DECT phone base station
- Small office/Home office (SoHo) FAX/TAM machines
- ISDN Terminals

#### Features

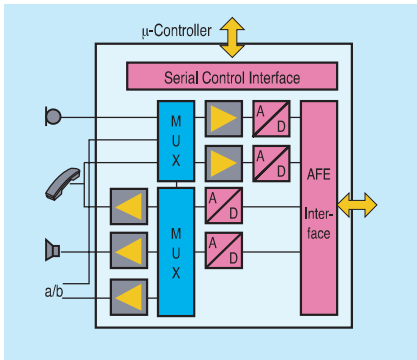
- Selectable (3.3, 5.4 and 10.3 kbit/s) compression rates (provides 20 min of storage with 4 Mbit of memory)

- Recompression of stored messages to free up memory space
- Support of emergency power operation in conjunction with PSB 4851 Analog Front End
- Flexible memory interface supports DRAM, ARAM, Flash
- Unique modular concept through building blocks
- IOM-2 Interface provides access to industry-renowned portfolio of Telecom-ICs
- Detection and generation of DTMF; Call progress, calling number signals
- Real time clock with extremely low power, tailcut, AGC

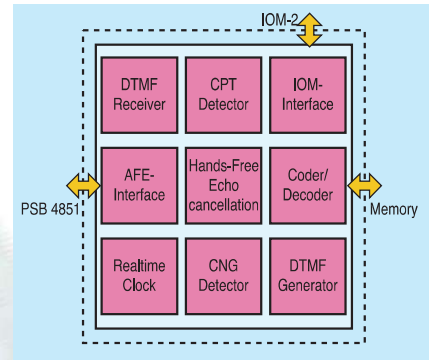
- Support for DECT Base Stations
- PSB 2168 downward compatible with PSB 4860
- Interface to Analog Front End PSB 4851+ Acoustic Echo Cancellation integrated in PSB 4860

#### Features of Analog Front End PSB 4851

- Supports low power emergency operation
- Dual-channel codec
- Direct connection of handset,  $\mu$ -phone, loudspeaker
- Serial control interface for programming



**Block Diagram**  
**PSB 4851**  
 (analog front end)

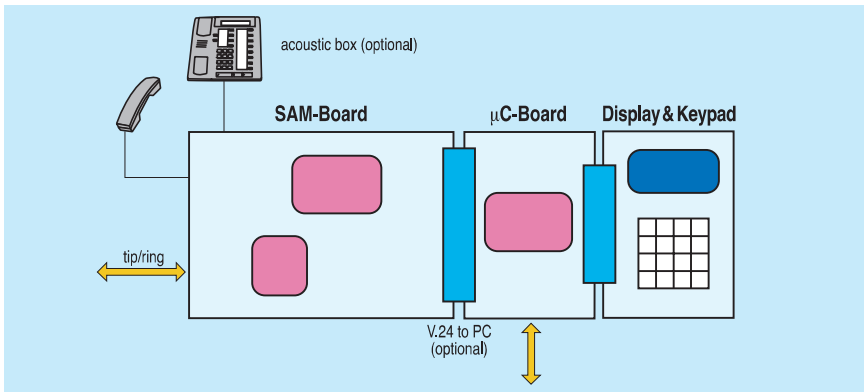


**PSB 2168, 4860**  
 (digital part)

**Documentation**

	Date of issue/version	Type of material
SAM Data Sheets PSB 2168/4860/4851	11/97	Copy, PDF File
SAM Flyer „ICs for Digital Answering Machines“	11/97	Color brochure B118-H7094-X-X-7600
Various app.notes		

**Suite of SAM Evolution-Boards**



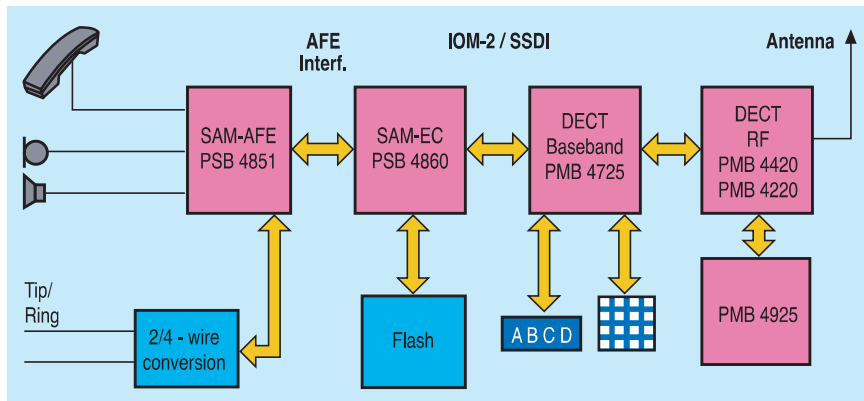
**Development and Support Tools**

- SAM Reference package SIPB 4870 (Q67220-H4870)
- SAM Board SIPB 4850 (Q67220-H1012)
- SAM Reference Software SIPB 4830 (Q67220-H1055)

**Application Example**

No additional microcontroller required

**Analog Dect Base Station**



- (A) **Wien**  
☎ (1) 17 07-356 11
- (AUS) **Richmond (Melbourne) Vic. 3121**  
☎ (03) 420 71 11
- (B) **Brussel/Bruxelles**  
☎ (2) 536 23 48
- (BR) **São Paulo-SP**  
☎ (011) 8 33-22 11
- (CDN) **Mississauga, Ontario L5T 1P2**  
☎ (416) 905-819-80 00
- (CH) **Zürich**  
☎ (01) 495-31 11
- (D) **Düsseldorf**  
☎ (0211) 399-29 30  
**Laatzen (Hannover)**  
☎ (0511) 877-22 22  
**München**  
☎ (089) 92 21-40 86  
**Nürnberg**  
☎ (0911) 654-76 99  
**Stuttgart**  
☎ (0711) 137-33 14
- (DK) **Ballerup**  
☎ 44 77 44 77
- (E) **Tres Cantos-Madrid**  
☎ (1) 514 8000
- (F) **Saint-Denis CEDEX 2**  
☎ (1) 49 22 31 00
- (GB) **Berkshire RG12 8FZ**  
☎ (0344) 39 60 00
- (GR) **Amaroussio/Athen**  
☎ (01) 6 86 41 11
- (HK) **Hong Kong**  
☎ (852) 28 32 05 00
- (I) **Milano**  
☎ (02) 66 76-1
- (IND) **Bombay**  
☎ (022) 493 87 86
- (IRL) **Dublin**  
☎ (01) 668 47 27
- (J) **Tokyo**  
☎ (81) 3-53 88 85 25
- (N) **Oslo**  
☎ (02) 63 30 00
- (NL) **Den Haag**  
☎ (70) 333 24 29
- (P) **Amadora**  
☎ (01) 417 00 11
- (PL) **Warszawa**  
☎ (022) 670-91-52
- (RC) **Taipei**  
☎ (02) 523 47 00
- (ROK) **Korea**  
☎ (822) 527-77 40
- (RUS) **Moskva**  
☎ (095) 237-64 76, -6911
- (S) **Kista**  
☎ (08) 703 35 00
- (SF) **Espoo**  
☎ (0) 510 51
- (SEP) **Singapore**  
☎ (65) 840 06 00
- (TR) **Findikli**  
☎ (01) 251 09 00
- (USA) **Cupertino**  
☎ (408) 777-45 00
- (ZA) **Halfway House**  
☎ (11) 652-20 00, -2700

How to reach us:

<http://www.siemens.de/Semiconductor/address/address.htm>

© Siemens AG 1998.  
 All Rights Reserved.

Please note that any information contained in this publication may be subject to change. Siemens reserves the right to make changes to or to discontinue any product or service identified in this publication without notice.

Please contact our regional offices to receive the latest version of the relevant information to verify, before placing orders, that the information being relied upon is current.